

Anti-PRMT2 Mouse Monoclonal Antibody [Clone ID: OTI3A3]

Catalog Number: M04706

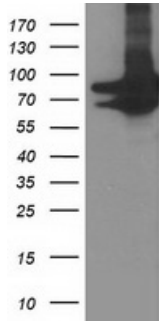
Overview

Product Name	Anti-PRMT2 Mouse Monoclonal Antibody [Clone ID: OTI3A3]
Reactive Species	Human, Mouse, Rat
Description	Boster Bio PRMT2 mouse monoclonal antibody, clone OTI3A3 (formerly 3A3). Catalog# M04706. Tested in IF, IHC, WB. This antibody reacts with Human, Mouse, Rat.
Application	IF, IHC, WB
Clonality	Monoclonal OTI3A3
Formulation	PBS (pH 7.3) containing 1% stabilizing protein, 50% glycerol and 0.02% sodium azide. This antibody is supplied in a stabilized formulation. Compatibility with conjugation reactions depends on the chemistry of the conjugation method used. For conjugation methods that are not compatible with the stabilizing components present in this formulation, a carrier-free antibody format is required.
Storage Instructions	Store at -20°C as received.
Host	Mouse
Uniprot ID	P55345

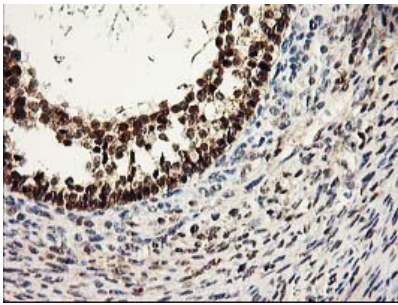
Technical Details

Immunogen	Full length human recombinant protein of human PRMT2 (NP_001526) produced in HEK293T cell.
Isotype	IgG1
Concentration	0.51 mg/ml
Purification	Purified from mouse ascites fluids or tissue culture supernatant by affinity chromatography (protein A/G)
Suggested Dilutions	WB 1:2000 IHC 1:150 IF 1:100

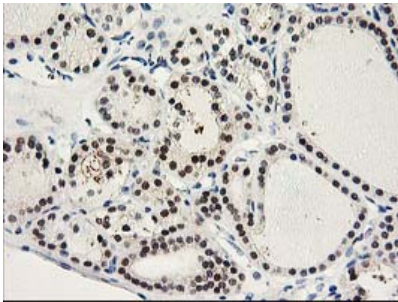
Anti-PRMT2 Mouse Monoclonal Antibody [Clone ID: OTI3A3] (M04706) Images



HEK293T cells were transfected with the pCMV6-ENTRY control (Left lane) or pCMV6-ENTRY PRMT2 (Right lane) cDNA for 48 hrs and lysed. Equivalent amounts of cell lysates (5 ug per lane) were separated by SDS-PAGE and immunoblotted with anti-PRMT2.



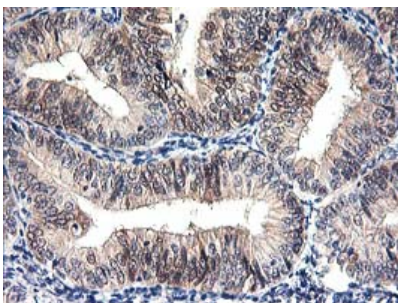
Immunohistochemical staining of paraffin-embedded Adenocarcinoma of Human ovary tissue using anti-PRMT2 mouse monoclonal antibody. (Heat-induced epitope retrieval by 10mM citric buffer)



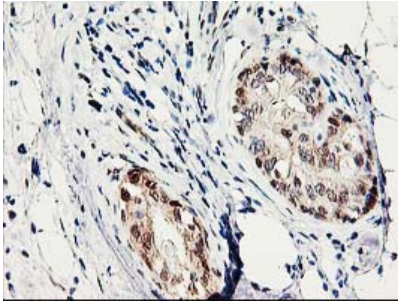
Immunohistochemical staining of paraffin-embedded Carcinoma of Human thyroid tissue using anti-PRMT2 mouse monoclonal antibody. (Heat-induced epitope retrieval by 10mM citric buffer)



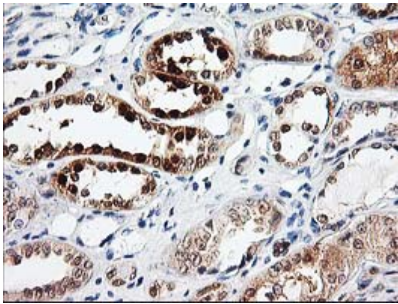
Immunohistochemical staining of paraffin-embedded Human endometrium tissue within the normal limits using anti-PRMT2 mouse monoclonal antibody. (Heat-induced epitope retrieval by 10mM citric buffer)



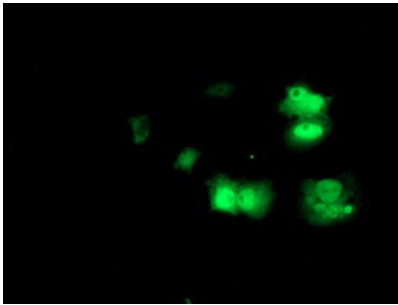
Immunohistochemical staining of paraffin-embedded Adenocarcinoma of Human endometrium tissue using anti-PRMT2 mouse monoclonal antibody. (Heat-induced epitope retrieval by 10mM citric buffer)



Immunohistochemical staining of paraffin-embedded Adenocarcinoma of Human breast tissue using anti-PRMT2 mouse monoclonal antibody. (Heat-induced epitope retrieval by 10mM citric buffer)



Immunohistochemical staining of paraffin-embedded Human Kidney tissue within the normal limits using anti-PRMT2 mouse monoclonal antibody. (Heat-induced epitope retrieval by 10mM citric buffer)



Anti-PRMT2 mouse monoclonal antibody (M04706) immunofluorescent staining of COS7 cells transiently transfected by pCMV6-ENTRY PRMT2.

Submit a product review to [Biocompare.com](https://www.biocompare.com)

Submit a review of this product to [Biocompare.com](https://www.biocompare.com) to receive a \$20 Amazon.com giftcard! Your reviews help your fellow scientists make the right decisions. Thank you for your contribution.



Anti-PRMT2 Mouse Monoclonal Antibody [Clone ID: OT13A3]

For Research Use Only. Not for use in diagnostic procedures.