

Anti-PP5 (PPP5C) Mouse Monoclonal Antibody [Clone ID: OTI2E12]

Catalog Number: M04723-3

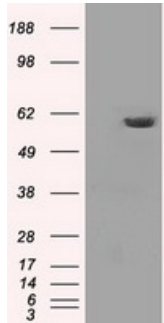
Overview

Product Name	Anti-PP5 (PPP5C) Mouse Monoclonal Antibody [Clone ID: OTI2E12]
Reactive Species	Dog, Human, Monkey, Mouse, Rat
Description	Boster Bio PPP5C (PP5) mouse monoclonal antibody, clone OTI2E12 (formerly 2E12). Catalog# M04723-3. Tested in FC, IF, IHC, WB. This antibody reacts with Human, Monkey, Mouse, Rat, Dog.
Application	Flow Cytometry, IF, IHC, WB
Clonality	Monoclonal OTI2E12
Formulation	PBS (pH 7.3) containing 1% stabilizing protein, 50% glycerol and 0.02% sodium azide. This antibody is supplied in a stabilized formulation. Compatibility with conjugation reactions depends on the chemistry of the conjugation method used. For conjugation methods that are not compatible with the stabilizing components present in this formulation, a carrier-free antibody format is required.
Storage Instructions	Store at -20°C as received.
Host	Mouse
Uniprot ID	P53041

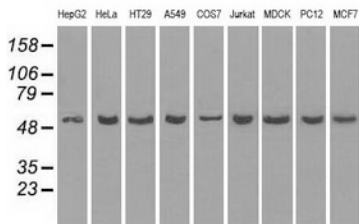
Technical Details

Immunogen	Full length human recombinant protein of human PPP5C (NP_006238) produced in HEK293T cell.
Isotype	IgG1
Concentration	1 mg/ml
Purification	Purified from mouse ascites fluids or tissue culture supernatant by affinity chromatography (protein A/G)
Suggested Dilutions	WB 1:1000~2000 IHC 1:50 IF 1:100 Flow Cytometry 1:100

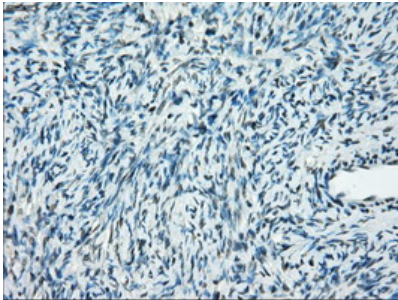
Anti-PP5 (PPP5C) Mouse Monoclonal Antibody [Clone ID: OTI2E12] (M04723-3) Images



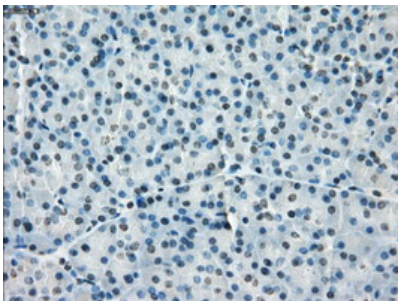
HEK293T cells were transfected with the pCMV6-ENTRY control (Left lane) or pCMV6-ENTRY PPP5C (Right lane) cDNA for 48 hrs and lysed. Equivalent amounts of cell lysates (5 ug per lane) were separated by SDS-PAGE and immunoblotted with anti-PPP5C.



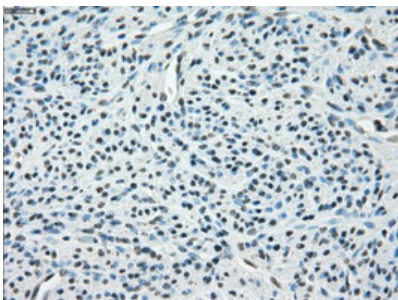
Western blot analysis of extracts (35ug) from 9 different cell lines by using anti-PPP5C monoclonal antibody.



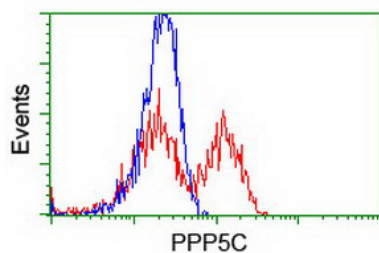
Immunohistochemical staining of paraffin-embedded Human Ovary tissue within the normal limits using anti-PPP5C mouse monoclonal antibody. (Heat-induced epitope retrieval by 10mM citric buffer)



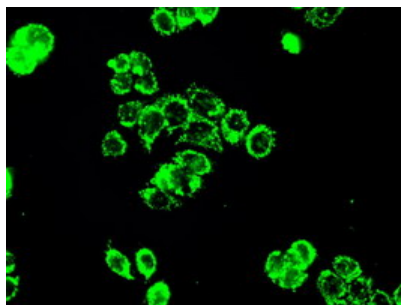
Immunohistochemical staining of paraffin-embedded Human pancreas tissue within the normal limits using anti-PPP5C mouse monoclonal antibody. (Heat-induced epitope retrieval by 10mM citric buffer)



Immunohistochemical staining of paraffin-embedded Human endometrium tissue within the normal limits using anti-PPP5C mouse monoclonal antibody. (Heat-induced epitope retrieval by 10mM citric buffer)



HEK293T cells transfected with either PPP5C (Myc-DDK-tagged) overexpress plasmid (Red) or empty vector control plasmid (Blue) were immunostained by anti-PPP5C antibody (M04723-3)



Immunofluorescent staining of HT29 cells using anti-PPP5C mouse monoclonal antibody (M04723-3).

Submit a product review to Biocompare.com

Submit a review of this product to Biocompare.com to receive a \$20 Amazon.com giftcard! Your reviews help your fellow scientists make the right decisions. Thank you for your contribution.



Anti-PP5 (PPP5C) Mouse Monoclonal Antibody [Clone ID: OTI2E12]

For Research Use Only. Not for use in diagnostic procedures.