

Anti-NKX2.2 (Neuroendocrine & Ewing's Sarcoma Marker) Monoclonal Antibody

Catalog Number: M04740

About NKX2-2

Expression of NKX2.2 has been found in neuroendocrine tumors of the gut, making it a potential marker for the study of gastrointestinal neuroendocrine tumors. More recently, NKX2.2 protein was identified as a target of EWS-FLI-1, the fusion protein specific to Ewing sarcoma, and was shown to be differentially upregulated in Ewing sarcoma on the basis of array-based gene expression analysis. It acts as a valuable marker for Ewing sarcoma, with a sensitivity of 93% and a specificity of 89%, and aids in the differential diagnosis of small round cell tumors.

Overview

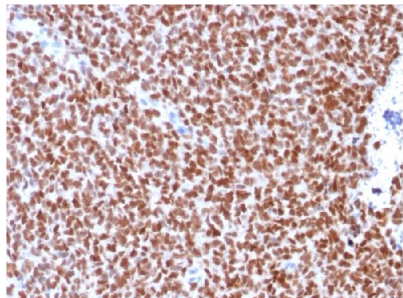
Product Name	Anti-NKX2.2 (Neuroendocrine & Ewing's Sarcoma Marker) Monoclonal Antibody
Reactive Species	Chicken, Human, Mouse, Rat
Description	Boster Bio Anti-NKX2.2 (Neuroendocrine & Ewing's Sarcoma Marker) Monoclonal Antibody (Catalog # M04740). Tested in IHC applications. This antibody reacts with Human, Mouse, Rat, Chicken.
Conjugate	Biotin
Application	IHC
Clonality	Monoclonal Clone: rNX2/294
Formulation	Prepared in 10mM PBS with 0.05% BSA & 0.05% azide. Also available WITHOUT BSA & azide at 1.0mg/ml.
Storage Instructions	Antibody with azide - store at 2 to 8°C. Antibody without azide - store at -20 to -80°C. Antibody is stable for 24 months. Non-hazardous. No MSDS required.
Host	Mouse
Uniprot ID	O95096

Technical Details

Immunogen	Recombinant full-length human NKX2.2 protein
Predicted Reactive Species	Pig, Rabbit
Cross Reactivity	Does not cross-react with primate, avian or amphibian GR.
Isotype	IgG1, kappa
Form	Liquid

Concentration	Purified antibody with BSA and azide at 200ug/ml
Purification	200ug/ml of recombinant monoclonal antibody purified by Protein A/G.
Suggested Dilutions	<p>Dilute the sample so that the expected range of concentrations fall within the detection range of this kit.</p> <p>If the expected range of concentration is unknown, a pilot test should be conducted to decide the optimal dilution ratio for your samples.</p> <p>Some PubMed article(s) citing the expression level of this target are as follows:</p> <p>Boster Bio's internal QC testing used:</p> <p>Immunohistochemistry (Formalin-fixed) (1-2ug/ml for 30 minutes at RT)(Staining of formalin-fixed tissues requires heating tissue sections in 10mM Tris with 1mM EDTA, pH 9.0, for 45 min at 95&degC followed by cooling at RT for 20 minutes)</p> <p>Optimal dilution for a specific application should be determined.</p>

Anti-NKX2.2 (Neuroendocrine & Ewing's Sarcoma Marker) Monoclonal Antibody (M04740) Images



Formalin-fixed, paraffin-embedded human Ewing's Sarcoma stained with NKX2.2-Monospecific Recombinant Mouse Monoclonal Antibody (rNX2/294)

Submit a product review to Biocompare.com

Submit a review of this product to Biocompare.com to receive a \$20 Amazon.com giftcard! Your reviews help your fellow scientists make the right decisions. Thank you for your contribution.



Anti-NKX2.2 (Neuroendocrine & Ewing's Sarcoma Marker) Monoclonal Antibody