

Anti-SAE1 Mouse Monoclonal Antibody [Clone ID: OTI6B11]

Catalog Number: M04753-1

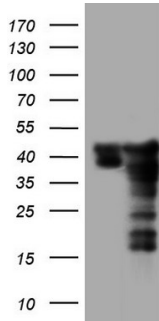
Overview

| | |
|----------------------|--|
| Product Name | Anti-SAE1 Mouse Monoclonal Antibody [Clone ID: OTI6B11] |
| Reactive Species | Human, Mouse, Rat |
| Description | Boster Bio SAE1 mouse monoclonal antibody, clone OTI6B11 (formerly 6B11). Catalog# M04753-1. Tested in IHC, WB. This antibody reacts with Human, Mouse, Rat. |
| Application | IHC, WB |
| Clonality | Monoclonal OTI6B11 |
| Formulation | PBS (pH 7.3) containing 1% stabilizing protein, 50% glycerol and 0.02% sodium azide. This antibody is supplied in a stabilized formulation. Compatibility with conjugation reactions depends on the chemistry of the conjugation method used. For conjugation methods that are not compatible with the stabilizing components present in this formulation, a carrier-free antibody format is required. |
| Storage Instructions | Store at -20°C as received. |
| Host | Mouse |
| Uniprot ID | Q9UBE0 |

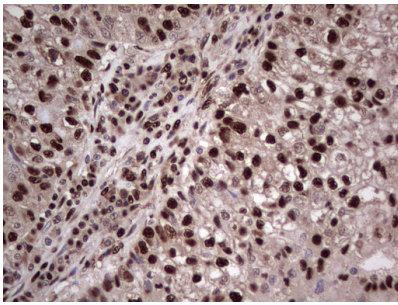
Technical Details

| | |
|---------------------|---|
| Immunogen | Full length human recombinant protein of human SAE1 (NP_005491) produced in HEK293T cell. |
| Isotype | IgG2b |
| Concentration | 1 mg/ml |
| Purification | Purified from mouse ascites fluids or tissue culture supernatant by affinity chromatography (protein A/G) |
| Suggested Dilutions | WB 1:2000 IHC 1:150 |

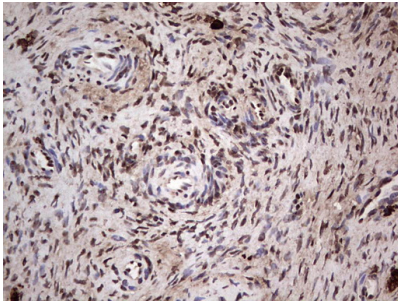
Anti-SAE1 Mouse Monoclonal Antibody [Clone ID: OTI6B11] (M04753-1) Images



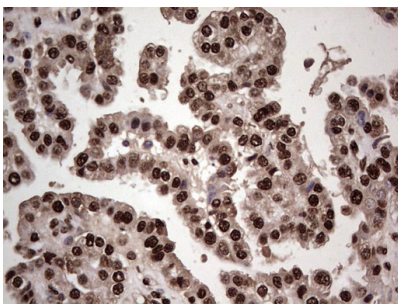
HEK293T cells were transfected with the pCMV6-ENTRY control (Left lane) or pCMV6-ENTRY SAE1 (Right lane) cDNA for 48 hrs and lysed. Equivalent amounts of cell lysates (5 ug per lane) were separated by SDS-PAGE and immunoblotted with anti-SAE1.



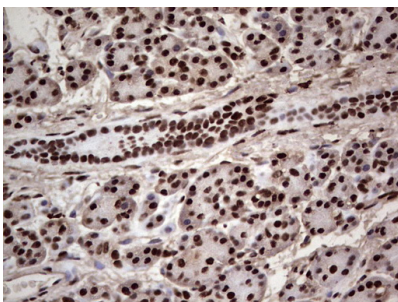
Immunohistochemical staining of paraffin-embedded Carcinoma of Human lung tissue using anti-SAE1 mouse monoclonal antibody. (Heat-induced epitope retrieval by 1 mM EDTA in 10mM Tris)



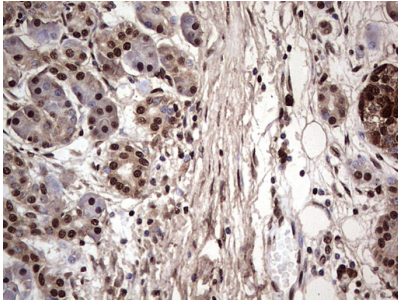
Immunohistochemical staining of paraffin-embedded Human Ovary tissue within the normal limits using anti-SAE1 mouse monoclonal antibody. (Heat-induced epitope retrieval by 1 mM EDTA in 10mM Tris)



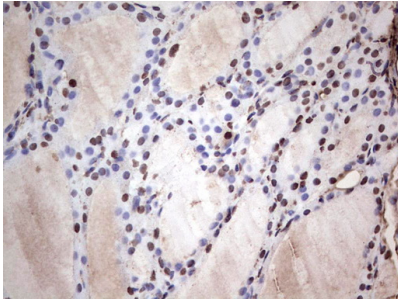
Immunohistochemical staining of paraffin-embedded Adenocarcinoma of Human ovary tissue using anti-SAE1 mouse monoclonal antibody. (Heat-induced epitope retrieval by 1 mM EDTA in 10mM Tris)



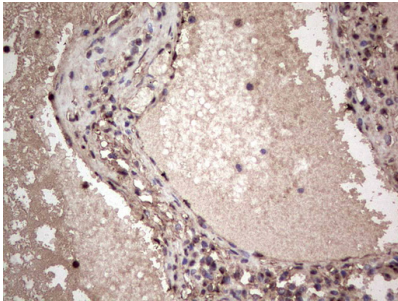
Immunohistochemical staining of paraffin-embedded Human pancreas tissue within the normal limits using anti-SAE1 mouse monoclonal antibody. (Heat-induced epitope retrieval by 1 mM EDTA in 10mM Tris)



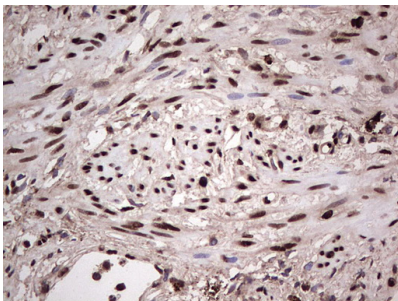
Immunohistochemical staining of paraffin-embedded Carcinoma of Human pancreas tissue using anti-SAE1 mouse monoclonal antibody. (Heat-induced epitope retrieval by 1 mM EDTA in 10mM Tris)



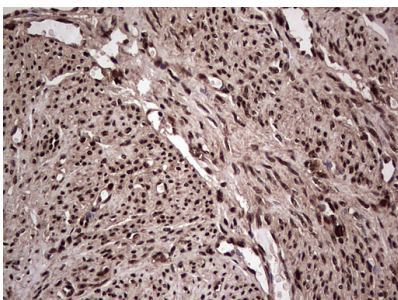
Immunohistochemical staining of paraffin-embedded Human thyroid tissue within the normal limits using anti-SAE1 mouse monoclonal antibody. (Heat-induced epitope retrieval by 1 mM EDTA in 10mM Tris)



Immunohistochemical staining of paraffin-embedded Carcinoma of Human thyroid tissue using anti-SAE1 mouse monoclonal antibody. (Heat-induced epitope retrieval by 1 mM EDTA in 10mM Tris)

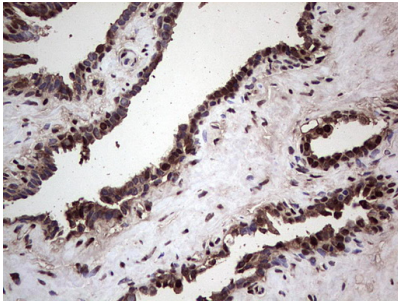


Immunohistochemical staining of paraffin-embedded Human endometrium tissue within the normal limits using anti-SAE1 mouse monoclonal antibody. (Heat-induced epitope retrieval by 1 mM EDTA in 10mM Tris)

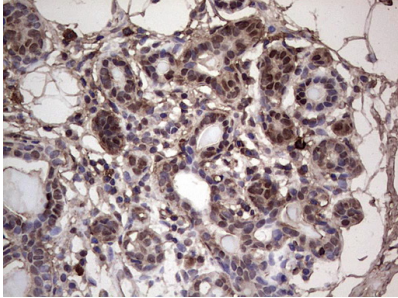


Immunohistochemical staining of paraffin-embedded Adenocarcinoma of Human endometrium tissue using anti-SAE1 mouse monoclonal antibody. (Heat-induced epitope retrieval by 1 mM EDTA in 10mM Tris)

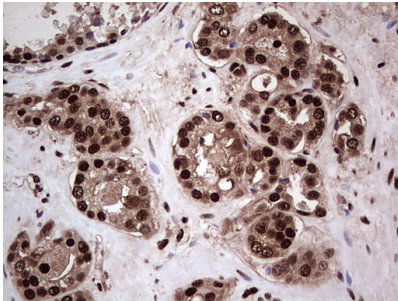
Immunohistochemical staining of paraffin-embedded Human prostate tissue within the normal limits using anti-SAE1



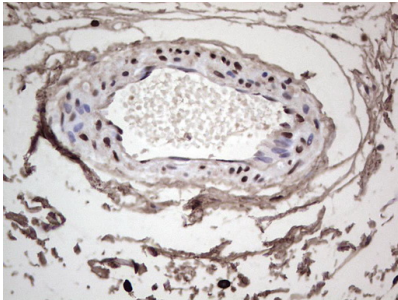
mouse monoclonal antibody. (Heat-induced epitope retrieval by 1 mM EDTA in 10mM Tris)



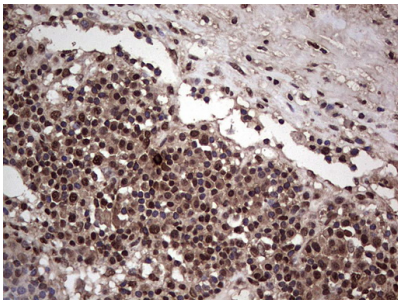
Immunohistochemical staining of paraffin-embedded Human breast tissue within the normal limits using anti-SAE1 mouse monoclonal antibody. (Heat-induced epitope retrieval by 1 mM EDTA in 10mM Tris)



Immunohistochemical staining of paraffin-embedded Carcinoma of Human prostate tissue using anti-SAE1 mouse monoclonal antibody. (Heat-induced epitope retrieval by 1 mM EDTA in 10mM Tris)

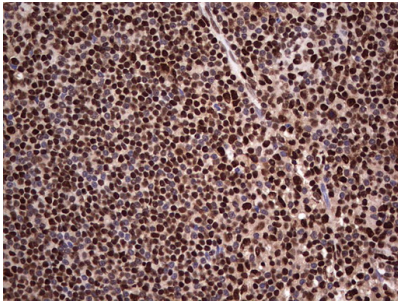


Immunohistochemical staining of paraffin-embedded Human bladder tissue within the normal limits using anti-SAE1 mouse monoclonal antibody. (Heat-induced epitope retrieval by 1 mM EDTA in 10mM Tris)

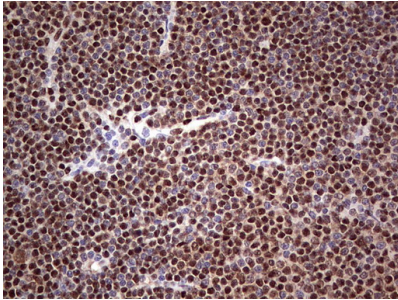


Immunohistochemical staining of paraffin-embedded Carcinoma of Human bladder tissue using anti-SAE1 mouse monoclonal antibody. (Heat-induced epitope retrieval by 1 mM EDTA in 10mM Tris)

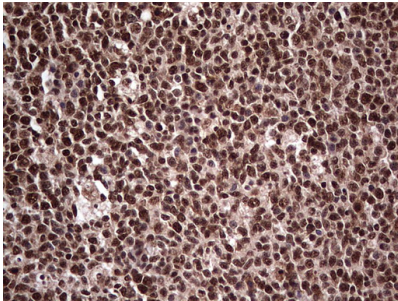
Immunohistochemical staining of paraffin-embedded Human lymph node tissue within the normal limits using anti-SAE1 mouse monoclonal antibody. (Heat-induced epitope retrieval



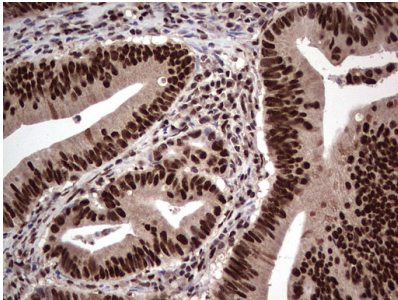
by 1 mM EDTA in 10mM Tris



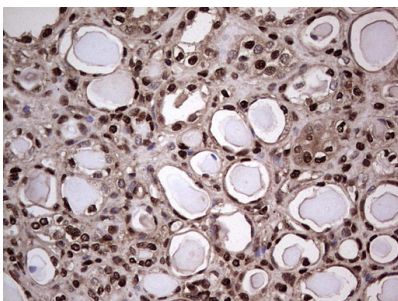
Immunohistochemical staining of paraffin-embedded Human lymphoma tissue using anti-SAE1 mouse monoclonal antibody. (Heat-induced epitope retrieval by 1 mM EDTA in 10mM Tris



Immunohistochemical staining of paraffin-embedded Human tonsil within the normal limits using anti-SAE1 mouse monoclonal antibody. (Heat-induced epitope retrieval by 1 mM EDTA in 10mM Tris

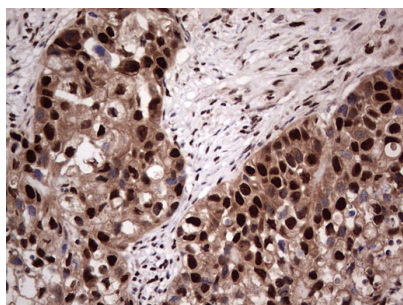


Immunohistochemical staining of paraffin-embedded Adenocarcinoma of Human colon tissue using anti-SAE1 mouse monoclonal antibody. (Heat-induced epitope retrieval by 1 mM EDTA in 10mM Tris

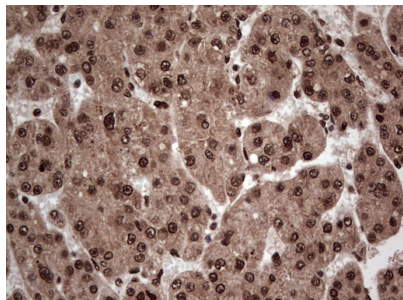


Immunohistochemical staining of paraffin-embedded Human Kidney tissue within the normal limits using anti-SAE1 mouse monoclonal antibody. (Heat-induced epitope retrieval by 1 mM EDTA in 10mM Tris

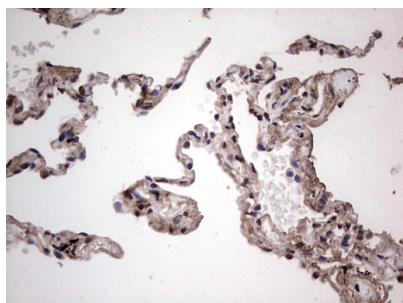
Immunohistochemical staining of paraffin-embedded Carcinoma of Human kidney tissue using anti-SAE1 mouse monoclonal antibody. (Heat-induced epitope retrieval by 1



mM EDTA in 10mM Tris



Immunohistochemical staining of paraffin-embedded Carcinoma of Human liver tissue using anti-SAE1 mouse monoclonal antibody. (Heat-induced epitope retrieval by 1 mM EDTA in 10mM Tris



Immunohistochemical staining of paraffin-embedded Human lung tissue within the normal limits using anti-SAE1 mouse monoclonal antibody. (Heat-induced epitope retrieval by 1 mM EDTA in 10mM Tris

Submit a product review to Biocompare.com

Submit a review of this product to Biocompare.com to receive a \$20 Amazon.com giftcard! Your reviews help your fellow scientists make the right decisions. Thank you for your contribution.



Anti-SAE1 Mouse Monoclonal Antibody [Clone ID: OTI6B11]

For Research Use Only. Not for use in diagnostic procedures.