

Anti-SAE1 Rabbit Monoclonal Antibody

Catalog Number: M04753-2

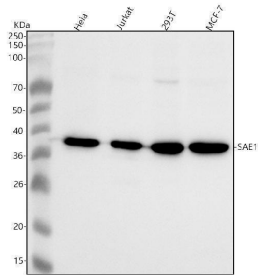
Overview

Product Name	Anti-SAE1 Rabbit Monoclonal Antibody
Reactive Species	Human, Rat
Description	Boster Bio Anti-SAE1 Rabbit Monoclonal Antibody catalog # M04753-2. Tested in WB, ICC/IF, IP, Flow Cytometry applications. This antibody reacts with Human, Rat.
Application	Flow Cytometry, IP, IF, ICC, WB
Clonality	Monoclonal 19S08
Formulation	Rabbit IgG in stabilizing components, phosphate buffered saline, pH 7.4, 150mM NaCl, 0.02% sodium azide and 50% glycerol. *This antibody is supplied in a stabilized formulation. Compatibility with conjugation reactions depends on the chemistry of the conjugation method used. For conjugation methods that are not compatible with the stabilizing components present in this formulation, a carrier-free antibody format is required.
Storage Instructions	Store at -20°C for one year. For short term storage and frequent use, store at 4°C for up to one month. Avoid repeated freeze-thaw cycles.
Host	Rabbit
Uniprot ID	Q9UBE0

Technical Details

Immunogen	A synthesized peptide derived from human SAE1
Isotype	IgG
Form	Liquid
Concentration	0.5mg/ml
Purification	Affinity-chromatography
Suggested Dilutions	WB 1:1000-5000 ICC/IF 1:50-200 IP 1:50 FC 1:100

Anti-SAE1 Rabbit Monoclonal Antibody (M04753-2) Images



Western blot analysis of SAE1 using anti-SAE1 antibody (M04753-2). Electrophoresis was performed on a 5-20% SDS-PAGE gel at 70V (Stacking gel) / 90V (Resolving gel) for 2-3 hours. The sample well of each lane was loaded with 30 ug of sample under reducing conditions. Lane 1: human HeLa whole cell lysates, Lane 2: human Jurkat whole cell lysates, Lane 3: human 293T whole cell lysates, Lane 4: human MCF-7 whole cell lysates. After electrophoresis, proteins were transferred to a nitrocellulose membrane at 150 mA for 50-90 minutes. Blocked the membrane with 5% non-fat milk/TBS for 1.5 hour at RT. The membrane was incubated with rabbit anti-SAE1 antigen affinity purified monoclonal antibody (Catalog # M04753-2) at 1:1000 overnight at 4°C, then washed with TBS-0.1%Tween 3 times with 5 minutes each and probed with a goat anti-rabbit IgG-HRP secondary antibody at a dilution of 1:1000 for 1.5 hour at RT. The signal is developed using an Enhanced Chemiluminescent detection (ECL) kit (Catalog # EK1002) with Tanon 5200 system. A specific band was detected for SAE1 at approximately 38 kDa. The expected band size for SAE1 is at 38 kDa.

Submit a product review to Biocompare.com

Submit a review of this product to Biocompare.com to receive a \$20 Amazon.com giftcard! Your reviews help your fellow scientists make the right decisions. Thank you for your contribution.



Anti-SAE1 Rabbit Monoclonal Antibody

For Research Use Only. Not for use in diagnostic procedures.