

Anti-SIL1 Mouse Monoclonal Antibody [Clone ID: OTI1F9]

Catalog Number: M04766-1

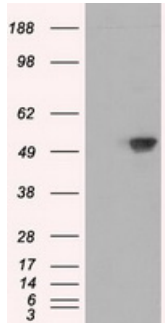
Overview

Product Name	Anti-SIL1 Mouse Monoclonal Antibody [Clone ID: OTI1F9]
Reactive Species	Human, Mouse, Rat
Description	Boster Bio Anti-SIL1 mouse monoclonal antibody, clone OTI1F9 (formerly 1F9). Catalog# M04766-1. Tested in IF, IHC, WB. This antibody reacts with Human, Mouse, Rat.
Application	IF, IHC, WB
Clonality	Monoclonal OTI1F9
Formulation	PBS (pH 7.3) containing 1% stabilizing protein, 50% glycerol and 0.02% sodium azide. This antibody is supplied in a stabilized formulation. Compatibility with conjugation reactions depends on the chemistry of the conjugation method used. For conjugation methods that are not compatible with the stabilizing components present in this formulation, a carrier-free antibody format is required.
Storage Instructions	Store at -20°C as received.
Host	Mouse
Uniprot ID	Q9H173

Technical Details

Immunogen	Full length human recombinant protein of human SIL1 (NP_071909) produced in HEK293T cell.
Isotype	IgG1
Concentration	0.53 mg/ml
Purification	Purified from mouse ascites fluids or tissue culture supernatant by affinity chromatography (protein A/G)
Suggested Dilutions	WB 1:2000 IHC 1:50 IF 1:100

Anti-SIL1 Mouse Monoclonal Antibody [Clone ID: OTI1F9] (M04766-1) Images



HEK293T cells were transfected with the pCMV6-ENTRY control (Left lane) or pCMV6-ENTRY SIL1 (Right lane) cDNA for 48 hrs and lysed. Equivalent amounts of cell lysates (5 ug per lane) were separated by SDS-PAGE and immunoblotted with anti-SIL1.

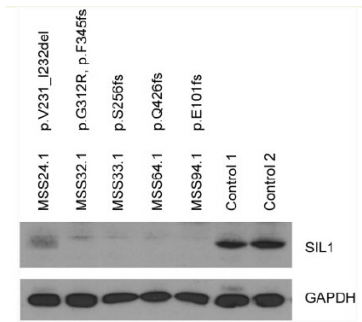
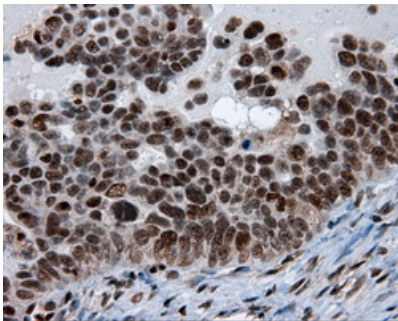
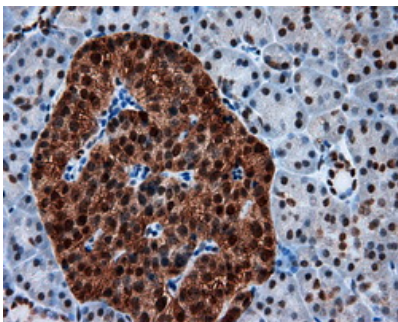


Figure from citation: Western Blot of SIL1 protein level by using anti-SIL1 antibody in immortalized lymphoblasts of patients with Marinesco-Sjogren syndrome. Dilution: 1:1000

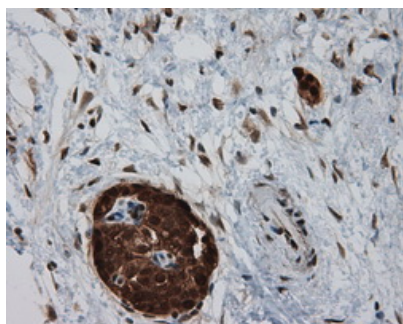


Immunohistochemical staining of paraffin-embedded Adenocarcinoma of ovary tissue using anti-SIL1 mouse monoclonal antibody. (Heat-induced epitope retrieval by 10mM citric buffer)

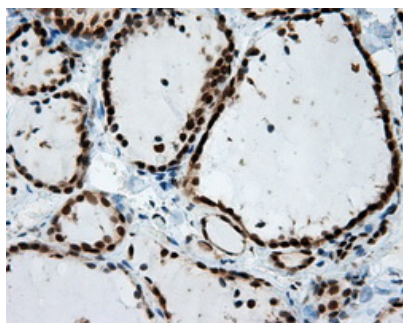


Immunohistochemical staining of paraffin-embedded pancreas tissue within the normal limits using anti-SIL1 mouse monoclonal antibody. (Heat-induced epitope retrieval by 10mM citric buffer)

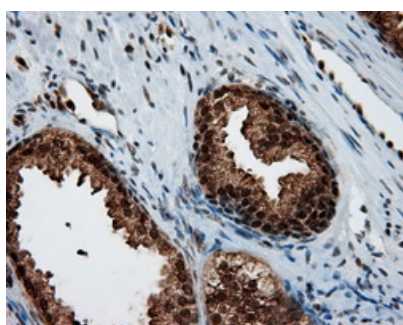
Immunohistochemical staining of paraffin-embedded Carcinoma of pancreas tissue using anti-SIL1 mouse monoclonal antibody. (Heat-induced epitope retrieval by 10mM citric buffer)



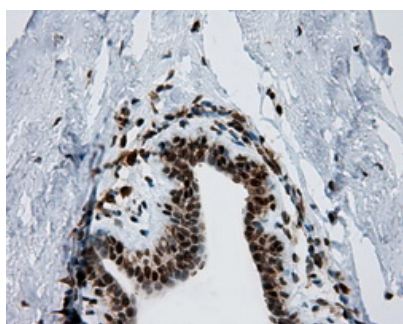
Immunohistochemical staining of paraffin-embedded thyroid tissue within the normal limits using anti-SIL1 mouse monoclonal antibody. (Heat-induced epitope retrieval by 10mM citric buffer)



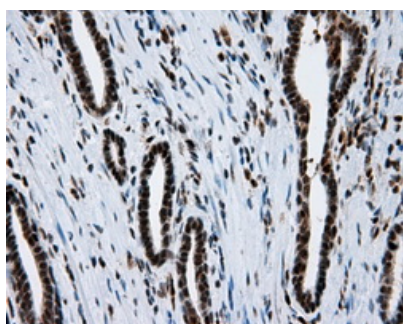
Immunohistochemical staining of paraffin-embedded prostate tissue within the normal limits using anti-SIL1 mouse monoclonal antibody. (Heat-induced epitope retrieval by 10mM citric buffer)

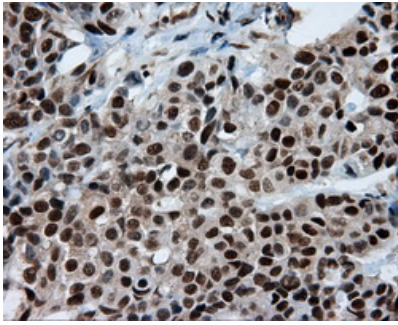


Immunohistochemical staining of paraffin-embedded breast tissue within the normal limits using anti-SIL1 mouse monoclonal antibody. (Heat-induced epitope retrieval by 10mM citric buffer)

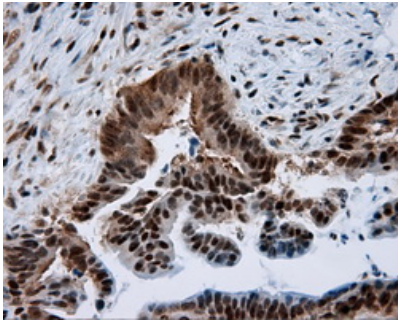


Immunohistochemical staining of paraffin-embedded Carcinoma of prostate tissue using anti-SIL1 mouse monoclonal antibody. (Heat-induced epitope retrieval by 10mM citric buffer)

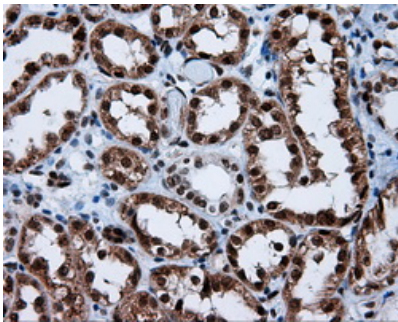




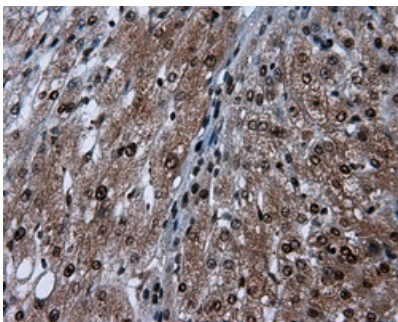
Immunohistochemical staining of paraffin-embedded Adenocarcinoma of breast tissue using anti-SIL1 mouse monoclonal antibody. (Heat-induced epitope retrieval by 10mM citric buffer)



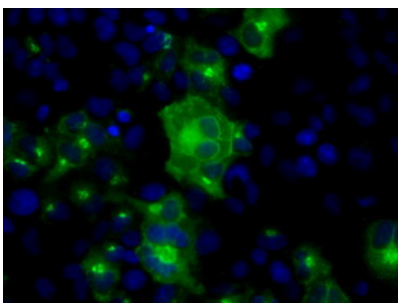
Immunohistochemical staining of paraffin-embedded Adenocarcinoma of colon tissue using anti-SIL1 mouse monoclonal antibody. (Heat-induced epitope retrieval by 10mM citric buffer)



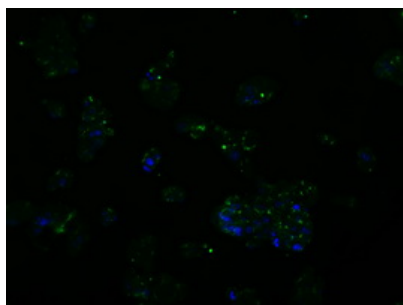
Immunohistochemical staining of paraffin-embedded Kidney tissue within the normal limits using anti-SIL1 mouse monoclonal antibody. (Heat-induced epitope retrieval by 10mM citric buffer)



Immunohistochemical staining of paraffin-embedded liver tissue within the normal limits using anti-SIL1 mouse monoclonal antibody. (Heat-induced epitope retrieval by 10mM citric buffer)



Anti-SIL1 mouse monoclonal antibody (M04766-1) immunofluorescent staining of COS7 cells transiently transfected by pCMV6-ENTRY SIL1.



Immunofluorescent staining of HepG2 cells using anti-SIL1 mouse monoclonal antibody (M04766-1).

Submit a product review to Biocompare.com

Submit a review of this product to Biocompare.com to receive a \$20 Amazon.com giftcard! Your reviews help your fellow scientists make the right decisions. Thank you for your contribution.



Anti-SIL1 Mouse Monoclonal Antibody [Clone ID: OTI1F9]

For Research Use Only. Not for use in diagnostic procedures.