

Anti-NR2E1 Rabbit Monoclonal Antibody

Catalog Number: M04767

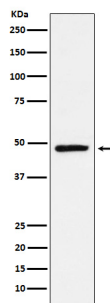
Overview

| | |
|----------------------|--|
| Product Name | Anti-NR2E1 Rabbit Monoclonal Antibody |
| Reactive Species | Human, Mouse, Rat |
| Description | Boster Bio Anti-NR2E1 Rabbit Monoclonal Antibody catalog # M04767. Tested in WB application. This antibody reacts with Human, Mouse, Rat. |
| Application | WB |
| Clonality | Monoclonal 24N10 |
| Formulation | Rabbit IgG in stabilizing components, phosphate buffered saline, pH 7.4, 150mM NaCl, 0.02% sodium azide and 50% glycerol. *This antibody is supplied in a stabilized formulation. Compatibility with conjugation reactions depends on the chemistry of the conjugation method used. For conjugation methods that are not compatible with the stabilizing components present in this formulation, a carrier-free antibody format is required. |
| Storage Instructions | Store at -20°C for one year. For short term storage and frequent use, store at 4°C for up to one month. Avoid repeated freeze-thaw cycles. |
| Host | Rabbit |
| Uniprot ID | Q9Y466 |

Technical Details

| | |
|---------------------|--|
| Immunogen | A synthesized peptide derived from human NR2E1 |
| Isotype | IgG |
| Form | Liquid |
| Concentration | 0.5mg/ml |
| Purification | Affinity-chromatography |
| Suggested Dilutions | WB 1:500-2000 |

Anti-NR2E1 Rabbit Monoclonal Antibody (M04767) Images



Western blot analysis of NR2E1 / Tailless expression in SH-SY5Y cell lysate.

Submit a product review to Biocompare.com

Submit a review of this product to Biocompare.com to receive a \$20 Amazon.com giftcard! Your reviews help your fellow scientists make the right decisions. Thank you for your contribution.



Anti-NR2E1 Rabbit Monoclonal Antibody

For Research Use Only. Not for use in diagnostic procedures.