

Anti-SLP76 Purified LCP2 Monoclonal Antibody

Catalog Number: M04880

About LCP2

SLP76 (SH2 domain-containing leukocyte protein of 76 kDa) is a cytosolic adaptor protein which translocates to the plasma membrane and is involved in multiple signaling pathways in T cells, mast cells, neutrophils and platelets; B cells express its analog SLP65/BLNK (B cell linker protein). SLP76 is phosphorylated by Syk-family and Tec-family tyrosine kinases and couples them to the phosphorylation and activation of PLC-gamma. Via Gads or Grb2, SLP76 also associates with LAT adaptor by involvement of SLP76 proline-rich region. The SH2 domain of SLP76 has been identified as the region involved in binding the serine/threonine kinase HPK1. HPK1 may act as both a positive and a negative regulator by promoting the Jnk-mitogen activated protein kinase (MAPK) pathway and inhibiting the pathway leading to AP-1 activation.

Overview

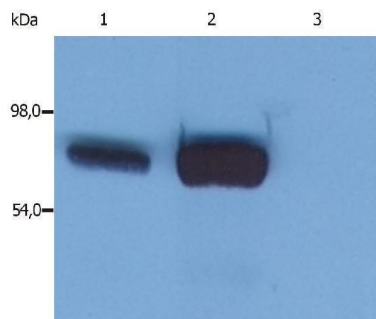
Product Name	Anti-SLP76 Purified LCP2 Monoclonal Antibody
Reactive Species	Human, Mouse, Pig
Description	Boster Bio Anti-SLP76 Purified LCP2 Monoclonal Antibody (Catalog# M04880). Tested in WB, IHC-P application(s). This antibody reacts with Pig, Human, Mouse.
Application	IHC-P, WB
Clonality	Monoclonal SLP-76/03
Formulation	Phosphate buffered saline (PBS), pH 7.4, 15 mM sodium azide
Storage Instructions	Store at 2-8°C. Do not freeze.
Host	Mouse
Uniprot ID	Q13094

Technical Details

Immunogen	Bacterially expressed fusion protein representing amino acids 216-434 of human SLP76 with histidine tag. The monoclonal antibody reacts with SLP76, a 76kDa cytosolic adaptor protein that is involved in signaling of various hematopoietic cells, such as T cells, mast cells or neutrophils; in B cells, however, it is replaced by SLP65.
Predicted Reactive Species	Primate
Cross Reactivity	This antibody does not cross-react with Thy-1.1 alloantigen.
Isotype	Mouse IgG2b
Form	Liquid
Concentration	1 mg/ml

Purification	Purified by protein-A affinity chromatography.
Suggested Dilutions	Immunohistochemistry (paraffin sections): 10 ug/ml; positive tissue: thymus

Anti-SLP76 Purified LCP2 Monoclonal Antibody (M04880) Images



Western blotting analysis (reducing conditions) of whole cell lysate using anti-SLP76 (SLP-76/03). Lane 1: HPB-ALL human peripheral blood T cell leukemia cell line Lane 2: JURKAT human peripheral blood T cell leukemia cell line Lane 3: RAMOS human Burkitt lymphoma cell line

Submit a product review to Biocompare.com

Submit a review of this product to Biocompare.com to receive a \$20 Amazon.com giftcard! Your reviews help your fellow scientists make the right decisions. Thank you for your contribution.



Anti-SLP76 Purified LCP2 Monoclonal Antibody

For Research Use Only. Not for use in diagnostic procedures.