

## Anti-RGS16 Mouse Monoclonal Antibody [Clone ID: OTI4E5]

Catalog Number: M04881

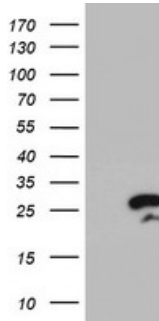
### Overview

Product Name	Anti-RGS16 Mouse Monoclonal Antibody [Clone ID: OTI4E5]
Reactive Species	Human
Description	Boster Bio RGS16 mouse monoclonal antibody, clone OTI4E5 (formerly 4E5). Catalog# M04881. Tested in FC, IF, IHC, WB. This antibody reacts with Human.
Application	Flow Cytometry, IF, IHC, WB
Clonality	Monoclonal OTI4E5
Formulation	PBS (pH 7.3) containing 1% stabilizing protein, 50% glycerol and 0.02% sodium azide. This antibody is supplied in a stabilized formulation. Compatibility with conjugation reactions depends on the chemistry of the conjugation method used. For conjugation methods that are not compatible with the stabilizing components present in this formulation, a carrier-free antibody format is required.
Storage Instructions	Store at -20°C as received.
Host	Mouse
Uniprot ID	O15492

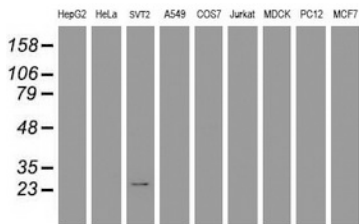
### Technical Details

Immunogen	Full length human recombinant protein of human RGS16 (NP_002919) produced in HEK293T cell.
Isotype	IgG1
Concentration	1 mg/ml
Purification	Purified from mouse ascites fluids or tissue culture supernatant by affinity chromatography (protein A/G)
Suggested Dilutions	WB 1:500~2000 IHC 1:150 IF 1:100 Flow Cytometry 1:100

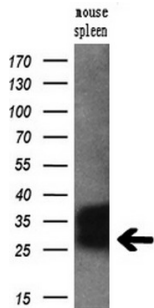
## Anti-RGS16 Mouse Monoclonal Antibody [Clone ID: OTI4E5] (M04881) Images



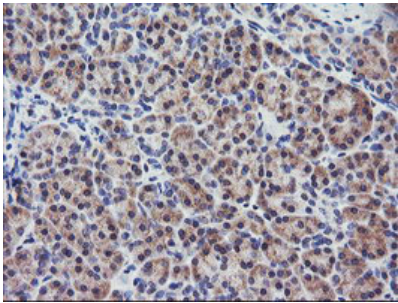
HEK293T cells were transfected with the pCMV6-ENTRY control (Left lane) or pCMV6-ENTRY RGS16 (Right lane) cDNA for 48 hrs and lysed. Equivalent amounts of cell lysates (5 ug per lane) were separated by SDS-PAGE and immunoblotted with anti-RGS16.



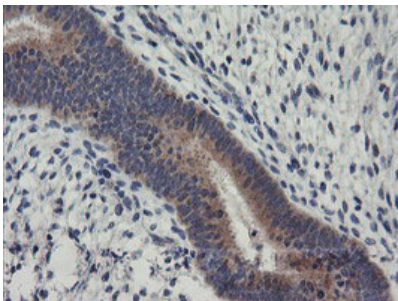
Western blot analysis of extracts (35ug) from 9 different cell lines by using anti-RGS16 monoclonal antibody.



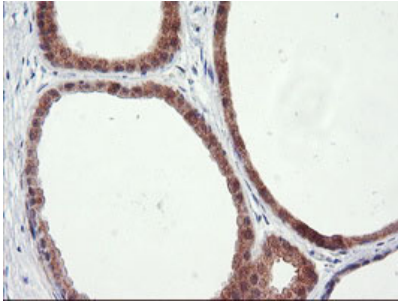
Western blot analysis of extracts (10ug) from a mouse tissue by using anti-RGS16 monoclonal antibody (1:200).



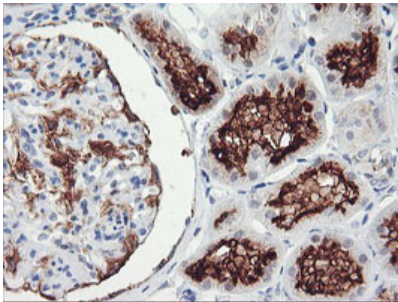
Immunohistochemical staining of paraffin-embedded Human pancreas tissue within the normal limits using anti-RGS16 mouse monoclonal antibody. (Heat-induced epitope retrieval by 10mM citric buffer)



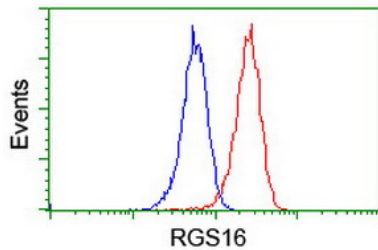
Immunohistochemical staining of paraffin-embedded Human endometrium tissue within the normal limits using anti-RGS16 mouse monoclonal antibody. (Heat-induced epitope retrieval by 10mM citric buffer)



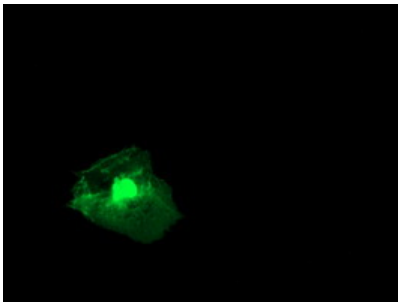
Immunohistochemical staining of paraffin-embedded Human breast tissue within the normal limits using anti-RGS16 mouse monoclonal antibody. (Heat-induced epitope retrieval by 10mM citric buffer)



Immunohistochemical staining of paraffin-embedded Human Kidney tissue within the normal limits using anti-RGS16 mouse monoclonal antibody. (Heat-induced epitope retrieval by 10mM citric buffer)



Flow cytometric Analysis of Jurkat cells



Anti-RGS16 mouse monoclonal antibody (M04881) immunofluorescent staining of COS7 cells transiently transfected by pCMV6-ENTRY RGS16.

## Submit a product review to Biocompare.com

Submit a review of this product to Biocompare.com to receive a \$20 Amazon.com giftcard! Your reviews help your fellow scientists make the right decisions. Thank you for your contribution.



Anti-RGS16 Mouse Monoclonal Antibody [Clone ID: OTI4E5]

For Research Use Only. Not for use in diagnostic procedures.