

Anti-MAN1 (LEMD3) Mouse Monoclonal Antibody [Clone ID: OTI3H1]

Catalog Number: M04957

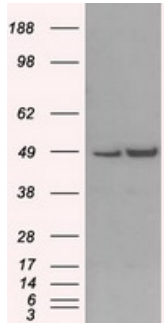
Overview

Product Name	Anti-MAN1 (LEMD3) Mouse Monoclonal Antibody [Clone ID: OTI3H1]
Reactive Species	Dog, Human, Monkey, Mouse, Rat
Description	Boster Bio Anti-LEMD3 (MAN1) mouse monoclonal antibody, clone OTI3H1 (formerly 3H1). Catalog# M04957. Tested in FC, IF, IP, WB. This antibody reacts with Human, Monkey, Mouse, Rat, Dog.
Application	Flow Cytometry, IP, IF, WB
Clonality	Monoclonal OTI3H1
Formulation	PBS (pH 7.3) containing 1% stabilizing protein, 50% glycerol and 0.02% sodium azide. This antibody is supplied in a stabilized formulation. Compatibility with conjugation reactions depends on the chemistry of the conjugation method used. For conjugation methods that are not compatible with the stabilizing components present in this formulation, a carrier-free antibody format is required.
Storage Instructions	Store at -20°C as received.
Host	Mouse
Uniprot ID	Q9Y2U8

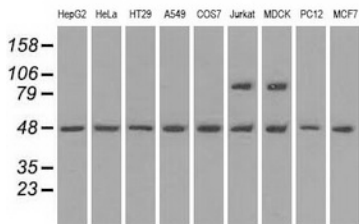
Technical Details

Immunogen	Full length human recombinant protein of human LEMD3 (NP_055134) produced in HEK293T cell.
Isotype	IgG1
Concentration	1 mg/ml
Purification	Purified from mouse ascites fluids or tissue culture supernatant by affinity chromatography (protein A/G)
Suggested Dilutions	WB 1:500 IF 1:100 Flow Cytometry 1:100 IP 2-4ug/mg

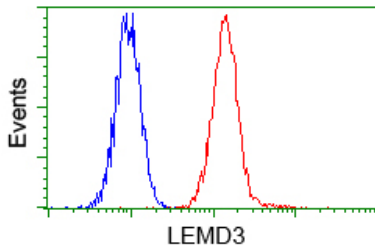
Anti-MAN1 (LEMD3) Mouse Monoclonal Antibody [Clone ID: OTI3H1] (M04957) Images



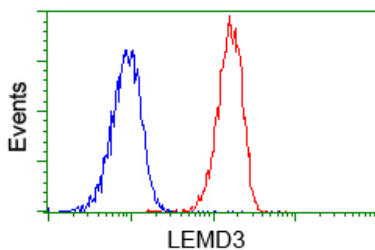
HEK293T cells were transfected with the pCMV6-ENTRY control (Left lane) or pCMV6-ENTRY LEMD3 (Right lane) cDNA for 48 hrs and lysed. Equivalent amounts of cell lysates (5 ug per lane) were separated by SDS-PAGE and immunoblotted with anti-LEMD3.



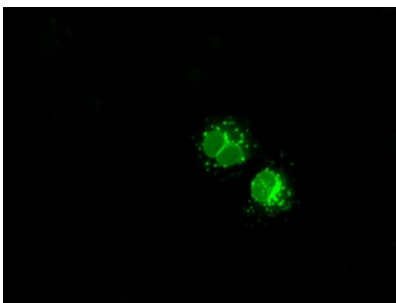
Western blot analysis of extracts (35ug) from 9 different cell lines by using anti-LEMD3 monoclonal antibody.



Flow cytometric analysis of HeLa cells



Flow cytometric analysis of Jurkat cells



Anti-LEMD3 mouse monoclonal antibody (M04957) immunofluorescent staining of COS7 cells transiently transfected by pCMV6-ENTRY LEMD3.

Submit a review of this product to Biocompare.com to receive a \$20 Amazon.com giftcard! Your reviews help your fellow scientists make the right decisions. Thank you for your contribution.



Anti-MAN1 (LEMD3) Mouse Monoclonal Antibody [Clone ID: OT13H1]

For Research Use Only. Not for use in diagnostic procedures.