

Anti-Surfactant protein A (SP-A) Rabbit Monoclonal Antibody, Clone#RM334

Catalog Number: M04967

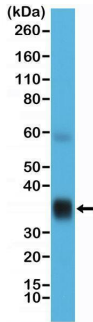
Overview

Product Name	Anti-Surfactant protein A (SP-A) Rabbit Monoclonal Antibody, Clone#RM334
Reactive Species	Human
Description	Boster Bio Anti-Surfactant protein A (SP-A) Rabbit Monoclonal Antibody, Clone#RM334 (Catalog # M04967). Tested in IHC, WB applications. This antibody reacts with Human.
Application	IHC, WB
Clonality	Monoclonal RM334
Formulation	50% Glycerol/PBS with 1% stabilizing protein and 0.09% sodium azide This antibody is supplied in a stabilized formulation. Compatibility with conjugation reactions depends on the chemistry of the conjugation method used. For conjugation methods that are not compatible with the stabilizing components present in this formulation, a carrier-free antibody format is required.
Storage Instructions	Store at -20°C for one year. Avoid repeated freeze-thaw cycles.
Host	Rabbit
Uniprot ID	Q8IWL1

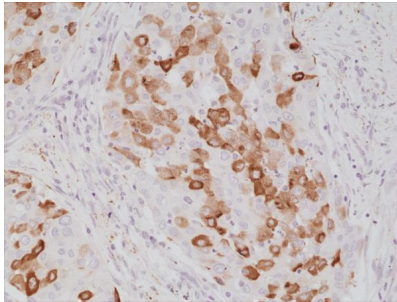
Technical Details

Immunogen	A peptide corresponding to the C-terminus of human Surfactant protein A (SP-A).
Cross Reactivity	This antibody reacts to human Surfactant protein A (SP-A).
Isotype	Rabbit IgG
Form	Liquid
Concentration	0.5-1mg/ml, actual concentration vary by lot. Use suggested dilution ratio to decide dilution procedure.
Purification	Protein A affinity purified from an animal origin-free culture supernatant
Suggested Dilutions	Immunohistochemistry (IHC): 1:500-1:1000 dilution WB: 1:1000-1:2000 dilution.

Anti-Surfactant protein A (SP-A) Rabbit Monoclonal Antibody, Clone#RM334 (M04967) Images



Western Blotting result Western Blot of human lung tissue lysate using anti-Surfactant protein A (SP-A) rabbit monoclonal antibody (Clone RM334) at a 1:10,000 dilution.



IHC result Immunohistochemical staining of formalin fixed and paraffin embedded human lung cancer tissue section using anti-Surfactant protein A (SP-A) rabbit monoclonal antibody (Clone RM334) at a 1:1000 dilution.

2 Publications Citing This Product

1. PubMed ID: PMID:26116593, Cyclophosphamide Combined with Bone Marrow Mesenchymal Stromal Cells Protects against Bleomycin-induced Lung Fibrosis in Mice
2. PubMed ID: 10.1159/000481845, Endoplasmic Reticulum Stress Induces HRD1 to Protect Alveolar Type II Epithelial Cells from Apoptosis Induced by Cigarette Smoke Extract

Visit [bosterbio.com/anti-surfactant-protein-a-sp-a-rabbit-monoclonal-antibody-clone-rm334-m04967-boster.html](https://www.bosterbio.com/anti-surfactant-protein-a-sp-a-rabbit-monoclonal-antibody-clone-rm334-m04967-boster.html) to see all 2 publications.

Submit a product review to Biocompare.com

Submit a review of this product to Biocompare.com to receive a \$20 Amazon.com giftcard! Your reviews help your fellow scientists make the right decisions. Thank you for your contribution.



Anti-Surfactant protein A (SP-A) Rabbit Monoclonal Antibody, Clone#RM334

For Research Use Only. Not for use in diagnostic procedures.