

## Anti-GIPC (GIPC1) Mouse Monoclonal Antibody [Clone ID: OTI5C10]

Catalog Number: M04969

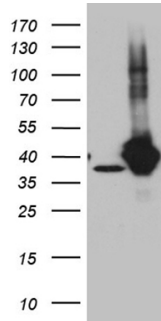
### Overview

Product Name	Anti-GIPC (GIPC1) Mouse Monoclonal Antibody [Clone ID: OTI5C10]
Reactive Species	Human, Mouse, Rat
Description	Boster Bio GIPC1 mouse monoclonal antibody, clone OTI5C10. Catalog# M04969. Tested in IHC, WB. This antibody reacts with Human, Mouse, Rat.
Application	IHC, WB
Clonality	Monoclonal OTI5C10
Formulation	PBS (pH 7.3) containing 1% stabilizing protein, 50% glycerol and 0.02% sodium azide. This antibody is supplied in a stabilized formulation. Compatibility with conjugation reactions depends on the chemistry of the conjugation method used. For conjugation methods that are not compatible with the stabilizing components present in this formulation, a carrier-free antibody format is required.
Storage Instructions	Store at -20°C as received.
Host	Mouse
Uniprot ID	O14908

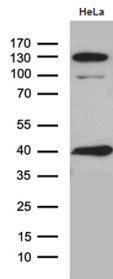
### Technical Details

Immunogen	Full length human recombinant protein of human GIPC1 (NP_974199) produced in E.coli.
Isotype	IgG2a
Concentration	1 mg/ml
Purification	Purified from mouse ascites fluids or tissue culture supernatant by affinity chromatography (protein A/G)
Suggested Dilutions	WB 1:500~2000, IHC 1:500

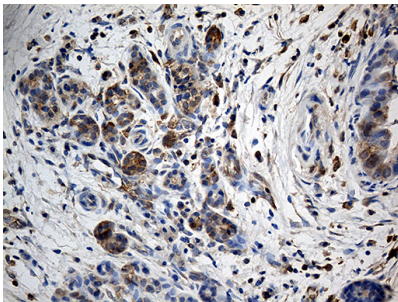
## Anti-GIPC (GIPC1) Mouse Monoclonal Antibody [Clone ID: OTI5C10] (M04969) Images



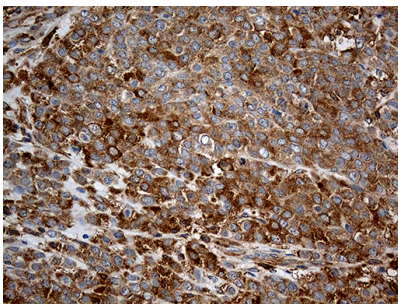
HEK293T cells were transfected with the pCMV6-ENTRY control (Left lane) or pCMV6-ENTRY GIPC1 (Right lane) cDNA for 48 hrs and lysed. Equivalent amounts of cell lysates (5 ug per lane) were separated by SDS-PAGE and immunoblotted with anti-GIPC1.



Western blot analysis of extracts (35ug) from HeLa cell line by using anti-GIPC1 monoclonal antibody (1:500).

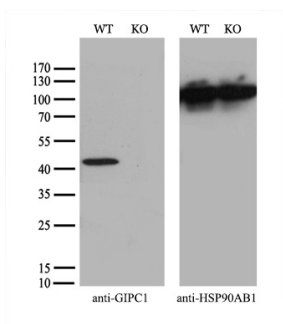


Immunohistochemical staining of paraffin-embedded Carcinoma of Human pancreas tissue using anti-GIPC1 mouse monoclonal antibody. (Heat-induced epitope retrieval by 1mM EDTA in 10mM Tris buffer (pH8.5) at 120Å°C for 3min)



Immunohistochemical staining of paraffin-embedded Adenocarcinoma of Human breast tissue tissue using anti-GIPC1 mouse monoclonal antibody. (Heat-induced epitope retrieval by 1mM EDTA in 10mM Tris buffer (pH8.5) at 120Å°C for 3min)

Equivalent amounts of cell lysates (10 ug per lane) of wild-type 293T cells (WT) and GIPC1-Knockout 293T cells (KO) were separated by SDS-PAGE and immunoblotted with anti-GIPC1 monoclonal antibody M04969 (1:500). Then the blotted membrane was stripped and reprobed with anti-HSP90 antibody as a loading control.



## Submit a product review to Biocompare.com

Submit a review of this product to Biocompare.com to receive a \$20 Amazon.com giftcard! Your reviews help your fellow scientists make the right decisions. Thank you for your contribution.



Anti-GIPC (GIPC1) Mouse Monoclonal Antibody [Clone ID: OTI5C10]

For Research Use Only. Not for use in diagnostic procedures.