

Anti-Laminin alpha 4 (LAMA4) Mouse Monoclonal Antibody [Clone ID: OTI5G8]

Catalog Number: M04999

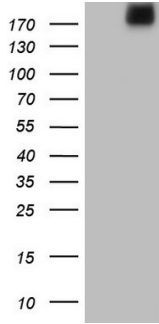
Overview

Product Name	Anti-Laminin alpha 4 (LAMA4) Mouse Monoclonal Antibody [Clone ID: OTI5G8]
Reactive Species	Human, Mouse, Rat
Description	Boster Bio LAMA4 mouse monoclonal antibody, clone OTI5G8 (formerly 5G8). Catalog# M04999. Tested in IHC, WB. This antibody reacts with Human, Mouse, Rat.
Application	IHC, WB
Clonality	Monoclonal OTI5G8
Formulation	PBS (pH 7.3) containing 1% stabilizing protein, 50% glycerol and 0.02% sodium azide. This antibody is supplied in a stabilized formulation. Compatibility with conjugation reactions depends on the chemistry of the conjugation method used. For conjugation methods that are not compatible with the stabilizing components present in this formulation, a carrier-free antibody format is required.
Storage Instructions	Store at -20°C as received.
Host	Mouse
Uniprot ID	Q16363

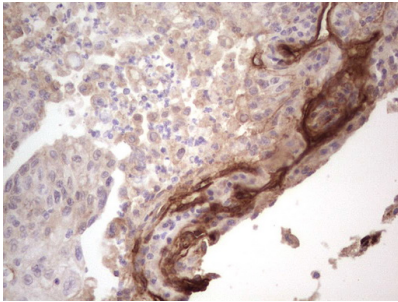
Technical Details

Immunogen	Human recombinant protein fragment corresponding to amino acids 25-270 of human LAMA4 (NP_001098676) produced in E.coli.
Isotype	IgG1
Concentration	1 mg/ml
Purification	Purified from mouse ascites fluids or tissue culture supernatant by affinity chromatography (protein A/G)
Suggested Dilutions	WB: 1:2000 IHC: 1:150

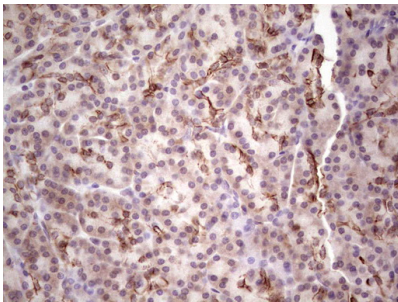
Anti-Laminin alpha 4 (LAMA4) Mouse Monoclonal Antibody [Clone ID: OTI5G8] (M04999) Images



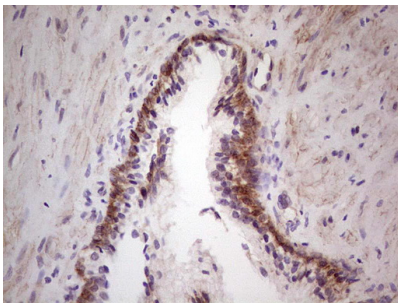
HEK293T cells were transfected with the pCMV6-ENTRY control (Left lane) or pCMV6-ENTRY LAMA4 (Right lane) cDNA for 48 hrs and lysed. Equivalent amounts of cell lysates (5 ug per lane) were separated by SDS-PAGE and immunoblotted with anti-LAMA4.



Immunohistochemical staining of paraffin-embedded Carcinoma of Human lung tissue using anti-LAMA4 mouse monoclonal antibody. (M04999; heat-induced epitope retrieval by 1 mM EDTA in 10mM Tris

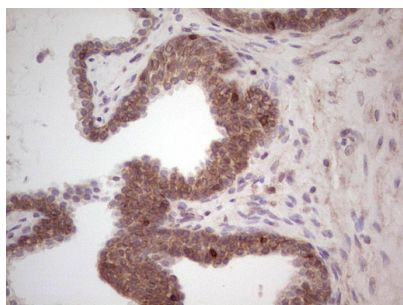


Immunohistochemical staining of paraffin-embedded Human pancreas tissue within the normal limits using anti-LAMA4 mouse monoclonal antibody. (M04999; heat-induced epitope retrieval by 1 mM EDTA in 10mM Tris

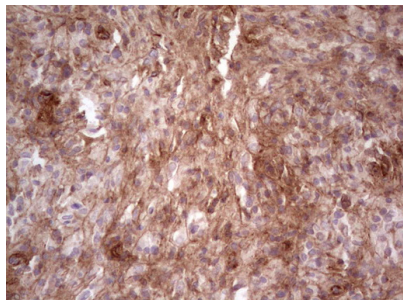


Immunohistochemical staining of paraffin-embedded Human prostate tissue within the normal limits using anti-LAMA4 mouse monoclonal antibody. (M04999; heat-induced epitope retrieval by 1 mM EDTA in 10mM Tris

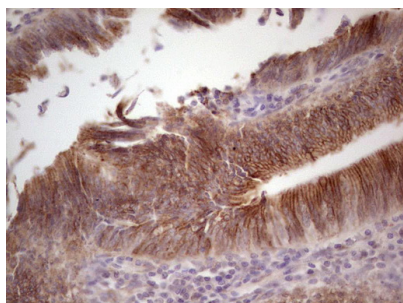
Immunohistochemical staining of paraffin-embedded Carcinoma of Human prostate tissue using anti-LAMA4 mouse monoclonal antibody. (M04999; heat-induced epitope retrieval by 1 mM EDTA in 10mM Tris



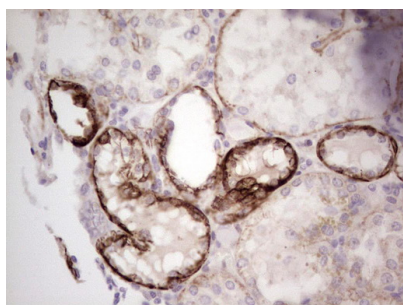
Immunohistochemical staining of paraffin-embedded Human lymph node tissue within the normal limits using anti-LAMA4 mouse monoclonal antibody. (M04999; heat-induced epitope retrieval by 1 mM EDTA in 10mM Tris



Immunohistochemical staining of paraffin-embedded Adenocarcinoma of Human colon tissue using anti-LAMA4 mouse monoclonal antibody. (M04999; heat-induced epitope retrieval by 1 mM EDTA in 10mM Tris



Immunohistochemical staining of paraffin-embedded Human Kidney tissue within the normal limits using anti-LAMA4 mouse monoclonal antibody. (M04999; heat-induced epitope retrieval by 1 mM EDTA in 10mM Tris



Immunohistochemical staining of paraffin-embedded Carcinoma of Human liver tissue using anti-LAMA4 mouse monoclonal antibody. (M04999; heat-induced epitope retrieval by 1 mM EDTA in 10mM Tris

Submit a product review to [Biocompare.com](https://www.biocompare.com)



Submit a review of this product to Biocompare.com to receive a \$20 Amazon.com giftcard! Your reviews help your fellow scientists make the right decisions. Thank you for your contribution.

Anti-Laminin alpha 4 (LAMA4) Mouse Monoclonal Antibody [Clone ID: OT15G8]

For Research Use Only. Not for use in diagnostic procedures.