

## Anti-Synaptophysin SYP Rabbit Monoclonal Antibody, Clone#RM258

Catalog Number: M05049-2

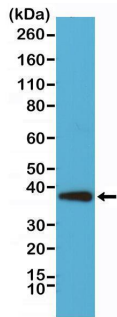
### Overview

Product Name	Anti-Synaptophysin SYP Rabbit Monoclonal Antibody, Clone#RM258
Reactive Species	Human
Description	Boster Bio Anti-Synaptophysin SYP Rabbit Monoclonal Antibody, Clone#RM258 (Catalog # M05049-2). Tested in WB, IHC applications. This antibody reacts with Human.
Application	IHC, WB
Clonality	Monoclonal RM258
Formulation	50% Glycerol/PBS with 1% stabilizing protein and 0.09% sodium azide This antibody is supplied in a stabilized formulation. Compatibility with conjugation reactions depends on the chemistry of the conjugation method used. For conjugation methods that are not compatible with the stabilizing components present in this formulation, a carrier-free antibody format is required.
Storage Instructions	Store at -20°C for one year. Avoid repeated freeze-thaw cycles.
Host	Rabbit
Uniprot ID	P08247

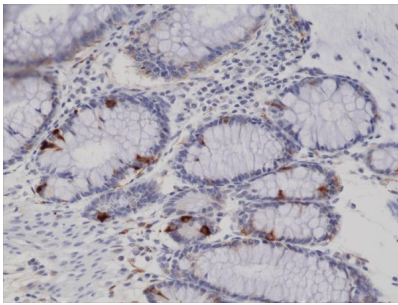
### Technical Details

Immunogen	A peptide corresponding to the C-terminus of Synaptophysin
Cross Reactivity	This antibody reacts to human Synaptophysin.
Isotype	Rabbit IgG
Form	Liquid
Concentration	0.5-1mg/ml, actual concentration vary by lot. Use suggested dilution ratio to decide dilution procedure.
Purification	Protein A affinity purified from an animal origin-free culture supernatant
Suggested Dilutions	WB: 1:1000-1:2000 dilution Immunohistochemistry (IHC): 1:200- 1:500 dilution.

## Anti-Synaptophysin SYP Rabbit Monoclonal Antibody, Clone#RM258 (M05049-2) Images



Western Blotting result Western Blot analysis of HeLa whole cell lysates, using anti-Synaptophysin rabbit monoclonal antibody (Clone RM258), showed Synaptophysin (~38 kDa) expression in HeLa cells.



IHC result Immunohistochemical staining of formalin fixed and paraffin embedded human colon tissue sections using anti-Synaptophysin rabbit monoclonal antibody (Clone RM258) at a 1:200 dilution.

### 1 Publications Citing This Product

1. PubMed ID: 25206583, Liu Y, Liang Z, Liu J, Zou W, Li X, Wang Y, An L. Neural Regen Res. 2013 Oct 15;8(29):2725-33. Doi: 10.3969/J.Issn.1673-5374.2013.29.004. Downregulation Of Caveolin-1 Contributes To The Synaptic Plasticity Deficit In The Hippocampus Of Aged Rats.

Visit [bosterbio.com/anti-synaptophysin-rabbit-monoclonal-antibody-clone-rm258-m05049-2-boster.html](http://bosterbio.com/anti-synaptophysin-rabbit-monoclonal-antibody-clone-rm258-m05049-2-boster.html) to see all 1 publications.

### Submit a product review to Biocompare.com

Submit a review of this product to Biocompare.com to receive a \$20 Amazon.com giftcard! Your reviews help your fellow scientists make the right decisions. Thank you for your contribution.



Anti-Synaptophysin SYP Rabbit Monoclonal Antibody, Clone#RM258

For Research Use Only. Not for use in diagnostic procedures.