

Anti-MSI1 Mouse Monoclonal Antibody [Clone ID: OTI1G8]

Catalog Number: M05052-2

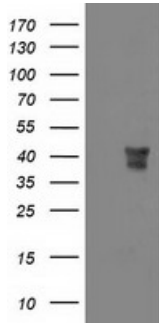
Overview

| | |
|----------------------|--------------------------------------------------------------------------------------------------------------------------------------------------------------------------------------------------------------------------------------------------------------------------------------------------------------------------------------------------------------------------------------------------------|
| Product Name | Anti-MSI1 Mouse Monoclonal Antibody [Clone ID: OTI1G8] |
| Reactive Species | Human, Monkey, Mouse, Rat |
| Description | Boster Bio MSI1 mouse monoclonal antibody, clone OTI1G8 (formerly 1G8). Catalog# M05052-2. Tested in FC, IF, IHC, WB. This antibody reacts with Human, Monkey, Mouse, Rat. |
| Application | Flow Cytometry, IF, IHC, WB |
| Clonality | Monoclonal OTI1G8 |
| Formulation | PBS (pH 7.3) containing 1% stabilizing protein, 50% glycerol and 0.02% sodium azide. This antibody is supplied in a stabilized formulation. Compatibility with conjugation reactions depends on the chemistry of the conjugation method used. For conjugation methods that are not compatible with the stabilizing components present in this formulation, a carrier-free antibody format is required. |
| Storage Instructions | Store at -20°C as received. |
| Host | Mouse |
| Uniprot ID | O43347 |

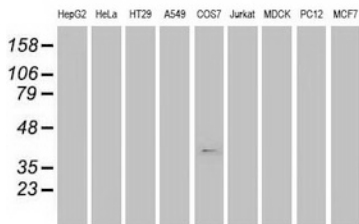
Technical Details

| | |
|---------------------|-----------------------------------------------------------------------------------------------------------|
| Immunogen | Full length human recombinant protein of human MSI1 (NP_002433) produced in HEK293T cell. |
| Isotype | IgG2a |
| Concentration | 1 mg/ml |
| Purification | Purified from mouse ascites fluids or tissue culture supernatant by affinity chromatography (protein A/G) |
| Suggested Dilutions | WB: 1:1000~2000 IHC: 1:150 IF: 1:100 Flow cytometry: 1:100 |

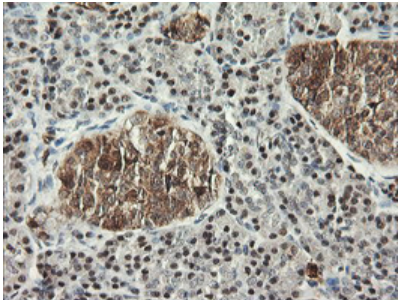
Anti-MSI1 Mouse Monoclonal Antibody [Clone ID: OTI1G8] (M05052-2) Images



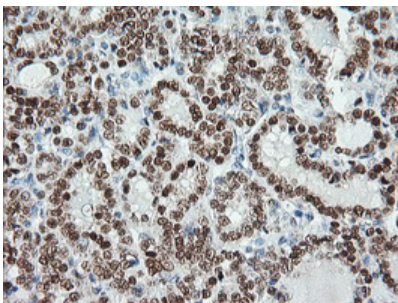
HEK293T cells were transfected with the pCMV6-ENTRY control (Left lane) or pCMV6-ENTRY MSI1 (Right lane) cDNA for 48 hrs and lysed. Equivalent amounts of cell lysates (5 ug per lane) were separated by SDS-PAGE and immunoblotted with anti-MSI1.



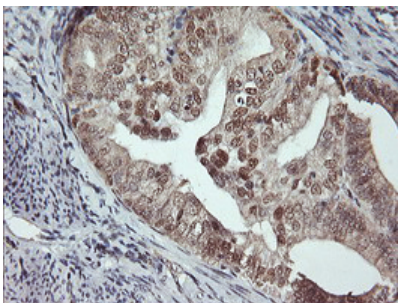
Western blot analysis of extracts (35ug) from 9 different cell lines by using anti-MSI1 monoclonal antibody (HepG2: human; HeLa: human; SVT2: mouse; A549: human; COS7: monkey; Jurkat: human; MDCK: canine; PC12: rat; MCF7: human).



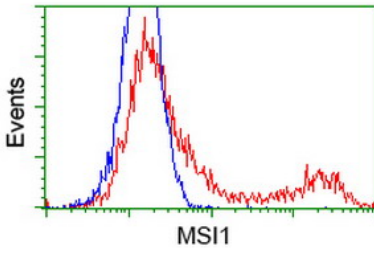
Immunohistochemical staining of paraffin-embedded Human pancreas tissue within the normal limits using anti-MSI1 mouse monoclonal antibody. (Heat-induced epitope retrieval by 10mM citric buffer)



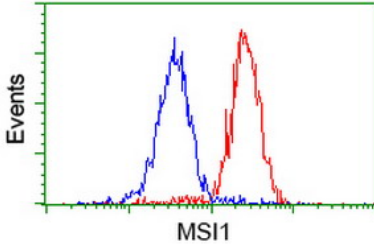
Immunohistochemical staining of paraffin-embedded Carcinoma of Human thyroid tissue using anti-MSI1 mouse monoclonal antibody. (Heat-induced epitope retrieval by 10mM citric buffer)



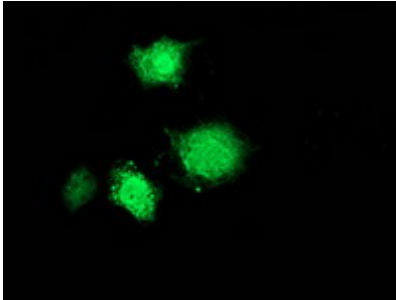
Immunohistochemical staining of paraffin-embedded Adenocarcinoma of Human endometrium tissue using anti-MSI1 mouse monoclonal antibody. (Heat-induced epitope retrieval by 10mM citric buffer)



HEK293T cells transfected with either MS11 (Myc-DDK-tagged) overexpress plasmid (Red) or empty vector control plasmid (Blue) were immunostained by anti-MS11 antibody (M05052-2)



Flow cytometric Analysis of HeLa cells



Anti-MS11 mouse monoclonal antibody (M05052-2) immunofluorescent staining of COS7 cells transiently transfected by pCMV6-ENTRY MS11.

Submit a product review to Biocompare.com

Submit a review of this product to Biocompare.com to receive a \$20 Amazon.com giftcard! Your reviews help your fellow scientists make the right decisions. Thank you for your contribution.



Anti-MS11 Mouse Monoclonal Antibody [Clone ID: OT11G8]

For Research Use Only. Not for use in diagnostic procedures.