

Anti-Ribophorin I (RPN1) Mouse Monoclonal Antibody [Clone ID: OTI3E1]

Catalog Number: M05063

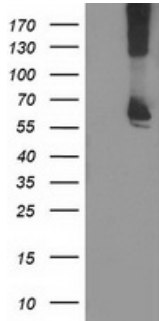
Overview

Product Name	Anti-Ribophorin I (RPN1) Mouse Monoclonal Antibody [Clone ID: OTI3E1]
Reactive Species	Human, Monkey, Mouse, Rat
Description	Boster Bio RPN1 (Ribophorin I) mouse monoclonal antibody, clone OTI3E1 (formerly 3E1). Catalog# M05063. Tested in FC, IF, IHC, WB. This antibody reacts with Human, Monkey, Mouse, Rat.
Application	Flow Cytometry, IF, IHC, WB
Clonality	Monoclonal OTI3E1
Formulation	PBS (PH 7.3) containing 1% BSA, 50% glycerol and 0.02% sodium azide.
Storage Instructions	Store at -20°C as received.
Host	Mouse
Uniprot ID	P04843

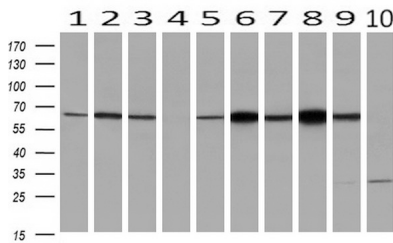
Technical Details

Immunogen	Full length human recombinant protein of human RPN1 (NP_002941) produced in HEK293T cell.
Isotype	IgG1
Concentration	0.59 mg/ml
Purification	Purified from mouse ascites fluids or tissue culture supernatant by affinity chromatography (protein A/G)
Suggested Dilutions	Dilute the sample so that the expected range of concentrations fall within the detection range of this kit. If the expected range of concentration is unknown, a pilot test should be conducted to decide the optimal dilution ratio for your samples. Some PubMed article(s) citing the expression level of this target are as follows:

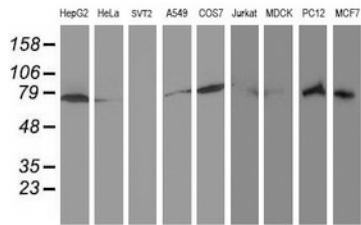
Anti-Ribophorin I (RPN1) Mouse Monoclonal Antibody [Clone ID: OTI3E1] (M05063) Images



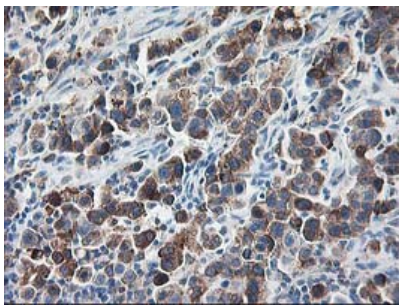
HEK293T cells were transfected with the pCMV6-ENTRY control (Left lane) or pCMV6-ENTRY RPN1 (Right lane) cDNA for 48 hrs and lysed. Equivalent amounts of cell lysates (5 ug per lane) were separated by SDS-PAGE and immunoblotted with anti-RPN1.



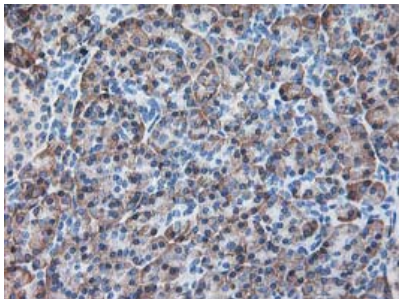
Western blot analysis of extracts (10ug) from 10 Human tissue by using anti-RPN1 monoclonal antibody at 1:200 (1: Testis; 2: Omentum; 3: Uterus; 4: Breast; 5: Brain; 6: Liver; 7: Ovary; 8: Thyroid gland; 9: colon; 10: spleen).



Western blot analysis of extracts (35ug) from 9 different cell lines by using anti-RPN1 monoclonal antibody.

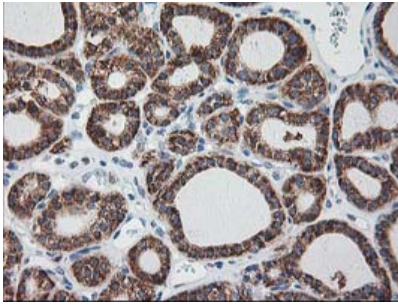


Immunohistochemical staining of paraffin-embedded Carcinoma of Human lung tissue using anti-RPN1 mouse monoclonal antibody. (Heat-induced epitope retrieval by 10mM citric buffer)

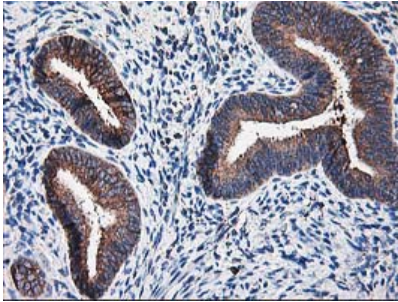


Immunohistochemical staining of paraffin-embedded Human pancreas tissue within the normal limits using anti-RPN1 mouse monoclonal antibody. (Heat-induced epitope retrieval by 10mM citric buffer)

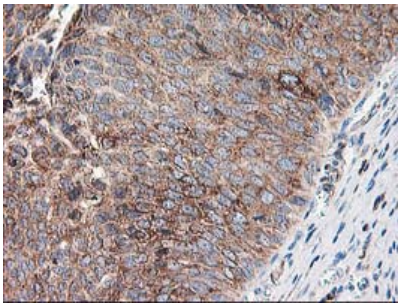
Immunohistochemical staining of paraffin-embedded



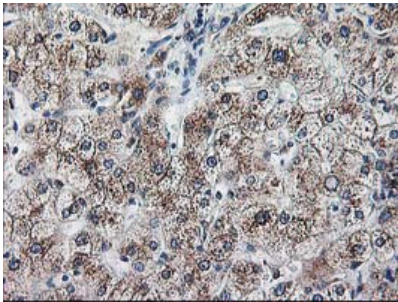
Carcinoma of Human thyroid tissue using anti-RPN1 mouse monoclonal antibody. (Heat-induced epitope retrieval by 10mM citric buffer)



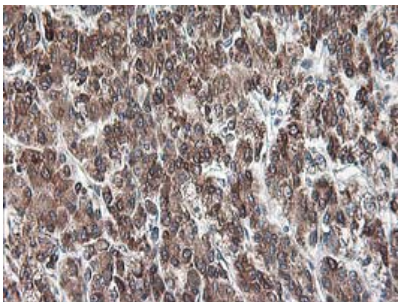
Immunohistochemical staining of paraffin-embedded Human endometrium tissue within the normal limits using anti-RPN1 mouse monoclonal antibody. (Heat-induced epitope retrieval by 10mM citric buffer)



Immunohistochemical staining of paraffin-embedded Carcinoma of Human bladder tissue using anti-RPN1 mouse monoclonal antibody. (Heat-induced epitope retrieval by 10mM citric buffer)

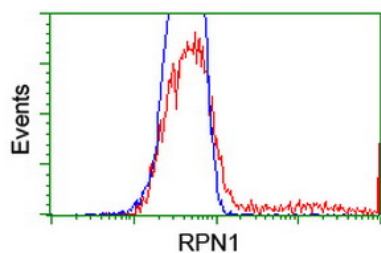


Immunohistochemical staining of paraffin-embedded Human liver tissue within the normal limits using anti-RPN1 mouse monoclonal antibody. (Heat-induced epitope retrieval by 10mM citric buffer)

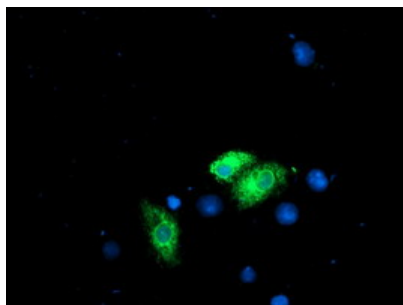


Immunohistochemical staining of paraffin-embedded Carcinoma of Human liver tissue using anti-RPN1 mouse monoclonal antibody. (Heat-induced epitope retrieval by 10mM citric buffer)

HEK293T cells transfected with either RPN1 (Myc-DDK-tagged) overexpress plasmid (Red) or empty vector control plasmid (Blue) were immunostained by anti-RPN1 antibody



(M05063)



Anti-RPN1 mouse monoclonal antibody (M05063)
immunofluorescent staining of COS7 cells transiently
transfected by pCMV6-ENTRY RPN1.

Submit a product review to Biocompare.com

Submit a review of this product to Biocompare.com to receive a \$20 Amazon.com giftcard! Your reviews help your fellow scientists make the right decisions. Thank you for your contribution.



Anti-Ribophorin I (RPN1) Mouse Monoclonal Antibody [Clone ID: OT13E1]