

Anti-Aldehyde dehydrogenase 10 (ALDH3A2) Mouse Monoclonal Antibody [Clone ID: OTI2A7]

Catalog Number: M05079-2

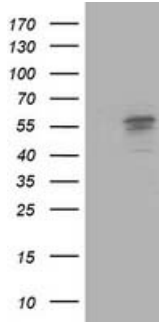
Overview

Product Name	Anti-Aldehyde dehydrogenase 10 (ALDH3A2) Mouse Monoclonal Antibody [Clone ID: OTI2A7]
Reactive Species	Human, Rat
Description	Boster Bio ALDH3A2 mouse monoclonal antibody, clone OTI2A7 (formerly 2A7). Catalog# M05079-2. Tested in FC, IHC, WB. This antibody reacts with Human, Rat.
Application	Flow Cytometry, IHC, WB
Clonality	Monoclonal OTI2A7
Formulation	PBS (pH 7.3) containing 1% stabilizing protein, 50% glycerol and 0.02% sodium azide. This antibody is supplied in a stabilized formulation. Compatibility with conjugation reactions depends on the chemistry of the conjugation method used. For conjugation methods that are not compatible with the stabilizing components present in this formulation, a carrier-free antibody format is required.
Storage Instructions	Store at -20°C as received.
Host	Mouse
Uniprot ID	P51648

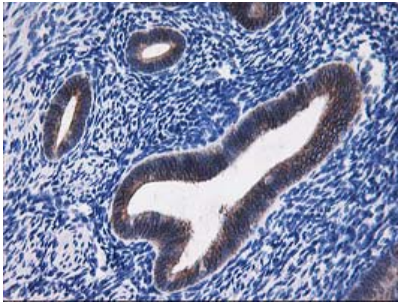
Technical Details

Immunogen	Full length human recombinant protein of human ALDH3A2 (NP_001026976) produced in HEK293T cell.
Isotype	IgG2b
Concentration	0.62 mg/ml
Purification	Purified from mouse ascites fluids or tissue culture supernatant by affinity chromatography (protein A/G)
Suggested Dilutions	WB 1:500 IHC 1:150 Flow Cytometry 1:100

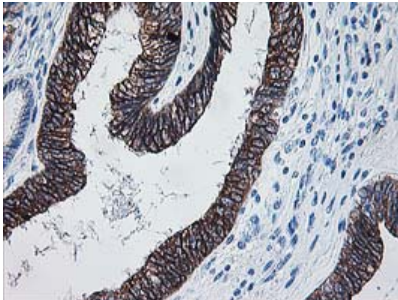
Anti-Aldehyde dehydrogenase 10 (ALDH3A2) Mouse Monoclonal Antibody [Clone ID: OTI2A7] (M05079-2) Images



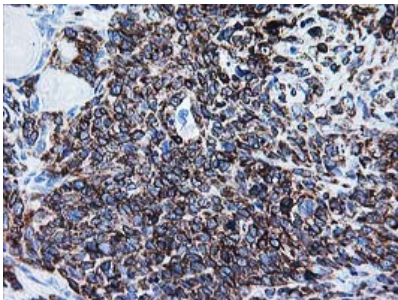
HEK293T cells were transfected with the pCMV6-ENTRY control (Left lane) or pCMV6-ENTRY ALDH3A2 (Right lane) cDNA for 48 hrs and lysed. Equivalent amounts of cell lysates (5 ug per lane) were separated by SDS-PAGE and immunoblotted with anti-ALDH3A2.



Immunohistochemical staining of paraffin-embedded Human endometrium tissue within the normal limits using anti-ALDH3A2 mouse monoclonal antibody. (Heat-induced epitope retrieval by 10mM citric buffer)

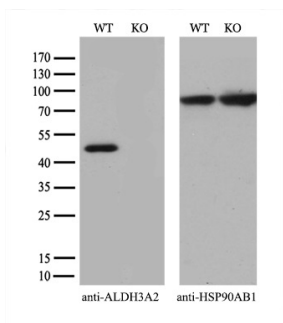
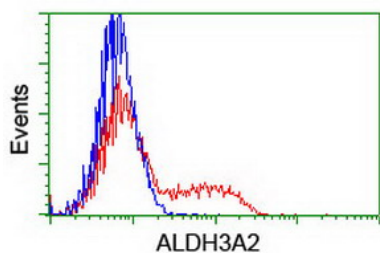


Immunohistochemical staining of paraffin-embedded Adenocarcinoma of Human endometrium tissue using anti-ALDH3A2 mouse monoclonal antibody. (Heat-induced epitope retrieval by 10mM citric buffer)



Immunohistochemical staining of paraffin-embedded Adenocarcinoma of Human breast tissue using anti-ALDH3A2 mouse monoclonal antibody. (Heat-induced epitope retrieval by 10mM citric buffer)

HEK293T cells transfected with either ALDH3A2 (Myc-DDK-tagged) overexpress plasmid (Red) or empty vector control plasmid (Blue) were immunostained by anti-ALDH3A2 antibody (M05079-2)



Equivalent amounts of cell lysates (10 ug per lane) of wild-type HeLa cells (WT) and ALDH3A2-Knockout HeLa cells (KO) were separated by SDS-PAGE and immunoblotted with anti-ALDH3A2 monoclonal antibody M05079-2 (1:500). Then the blotted membrane was stripped and reprobed with anti-HSP90 antibody as a loading control.

Submit a product review to [Biocompare.com](https://www.biocompare.com)

Submit a review of this product to [Biocompare.com](https://www.biocompare.com) to receive a \$20 Amazon.com giftcard! Your reviews help your fellow scientists make the right decisions. Thank you for your contribution.



Anti-Aldehyde dehydrogenase 10 (ALDH3A2) Mouse Monoclonal Antibody [Clone ID: OTI2A7]

For Research Use Only. Not for use in diagnostic procedures.