

## Anti-PSMA7 Mouse Monoclonal Antibody [Clone ID: OTI5F6]

Catalog Number: M05091-1

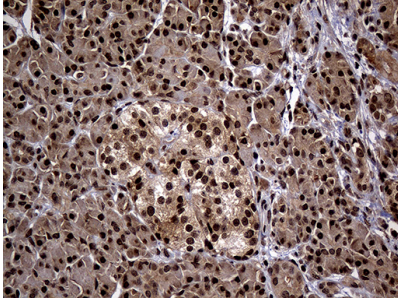
### Overview

Product Name	Anti-PSMA7 Mouse Monoclonal Antibody [Clone ID: OTI5F6]
Reactive Species	Human, Mouse, Rat
Description	Boster Bio PSMA7 mouse monoclonal antibody, clone OTI5F6. Catalog# M05091-1. Tested in IHC, WB. This antibody reacts with Human, Mouse, Rat.
Conjugate	Unconjugated
Application	IHC, WB
Clonality	Monoclonal OTI5F6
Formulation	PBS (pH 7.3) containing 1% stabilizing protein, 50% glycerol and 0.02% sodium azide. This antibody is supplied in a stabilized formulation. Compatibility with conjugation reactions depends on the chemistry of the conjugation method used. For conjugation methods that are not compatible with the stabilizing components present in this formulation, a carrier-free antibody format is required.
Storage Instructions	Store at -20°C for one year. For short term storage and frequent use, store at 4°C for up to one month. Avoid repeated freeze-thaw cycles.
Host	Mouse
Uniprot ID	O14818

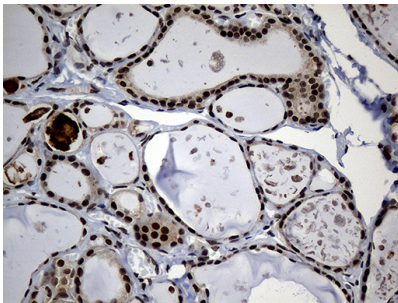
### Technical Details

Immunogen	Full length human recombinant protein of human PSMA7 (NP_002783) produced in HEK293T cell.
Isotype	IgG2b
Concentration	1 mg/ml
Purification	Purified from mouse ascites fluids or tissue culture supernatant by affinity chromatography (protein A/G)
Suggested Dilutions	WB 1:500~2000 IHC 1:2000

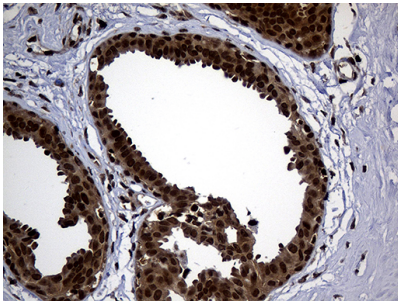
## Anti-PSMA7 Mouse Monoclonal Antibody [Clone ID: OTI5F6] (M05091-1) Images



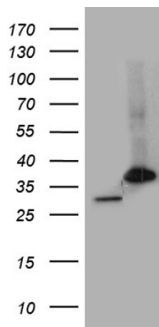
Immunohistochemical staining of paraffin-embedded Human pancreas tissue within the normal limits using anti-PSMA7 mouse monoclonal antibody. (Heat-induced epitope retrieval by 1mM EDTA in 10mM Tris buffer (pH8.5) at 120Å°C for 3min)



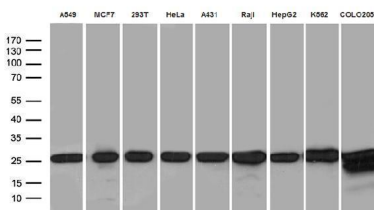
Immunohistochemical staining of paraffin-embedded Human thyroid tissue within the normal limits using anti-PSMA7 mouse monoclonal antibody. (Heat-induced epitope retrieval by 1mM EDTA in 10mM Tris buffer (pH8.5) at 120Å°C for 3min)



Immunohistochemical staining of paraffin-embedded Human breast tissue within the normal limits using anti-PSMA7 mouse monoclonal antibody. (Heat-induced epitope retrieval by 1mM EDTA in 10mM Tris buffer (pH8.5) at 120Å°C for 3min)



HEK293T cells were transfected with the pCMV6-ENTRY control (Left lane) or pCMV6-ENTRY PSMA7 (Right lane) cDNA for 48 hrs and lysed. Equivalent amounts of cell lysates (5 ug per lane) were separated by SDS-PAGE and immunoblotted with anti-PSMA7 (1:2000).



Western blot analysis of extracts (35ug) from 9 different cell lines by using anti-PSMA7 monoclonal antibody (1:500).

## Submit a product review to Biocompare.com

Submit a review of this product to Biocompare.com to receive a \$20 Amazon.com giftcard! Your reviews help your fellow scientists make the right decisions. Thank you for your contribution.



Anti-PSMA7 Mouse Monoclonal Antibody [Clone ID: OTI5F6]

For Research Use Only. Not for use in diagnostic procedures.