

## Anti-Rab25 Rabbit Monoclonal Antibody

Catalog Number: M05115

### About RAB25

Putative transcription factor involved in pancreas development and function.

### Overview

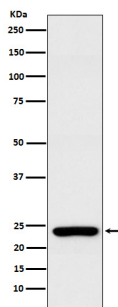
Product Name	Anti-Rab25 Rabbit Monoclonal Antibody
Reactive Species	Human
Description	Boster Bio Anti-Rab25 Rabbit Monoclonal Antibody catalog # M05115. Tested in WB application. This antibody reacts with Human.
Conjugate	FITC
Application	WB
Clonality	Monoclonal 19R29
Formulation	Rabbit IgG in phosphate buffered saline, pH 7.4, 150mM NaCl, 0.02% sodium azide and 50% glycerol, 0.4-0.5mg/ml BSA.
Storage Instructions	Store at -20°C for one year. For short term storage and frequent use, store at 4°C for up to one month. Avoid repeated freeze-thaw cycles.
Host	Rabbit
Uniprot ID	P57735

### Technical Details

Immunogen	A synthesized peptide derived from human Rab25
Predicted Reactive Species	Human, Primate
Cross Reactivity	Detects ~20kDa. Does not cross-react with alphaB-crystallin, betaL-crystallin, ̢H-crystallin, gamma-crystallin, HSP25, HSP27 or HSP47 proteins.
Isotype	IgG
Form	Liquid
Concentration	Actual concentration vary by lot. Use suggested dilution ratio to decide dilution procedure.
Purification	Affinity-chromatography
Suggested Dilutions	Dilute the sample so that the expected range of concentrations fall within the detection range of this kit.

If the expected range of concentration is unknown, a pilot test should be conducted to decide the optimal dilution ratio for your samples.  
Some PubMed article(s) citing the expression level of this target are as follows:  
Boster Bio's internal QC testing used:  
WB 1:500-1:1000

## Anti-Rab25 Rabbit Monoclonal Antibody (M05115) Images



Western blot analysis of Rab25 expression in MCF7 cell lysate.

### Submit a product review to Biocompare.com

Submit a review of this product to Biocompare.com to receive a \$20 Amazon.com giftcard! Your reviews help your fellow scientists make the right decisions. Thank you for your contribution.



Anti-Rab25 Rabbit Monoclonal Antibody