

## Anti-Endo G (ENDO G) Mouse Monoclonal Antibody [Clone ID: OTI5F1]

Catalog Number: M05147-1

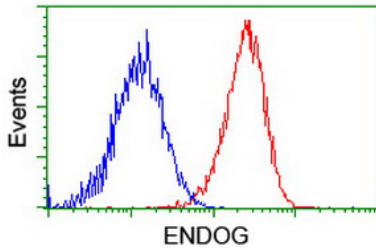
### Overview

Product Name	Anti-Endo G (ENDO G) Mouse Monoclonal Antibody [Clone ID: OTI5F1]
Reactive Species	Human, Mouse, Rat
Description	Boster Bio ENDO G (Endonuclease G) mouse monoclonal antibody, clone OTI5F1 (formerly 5F1). Catalog# M05147-1. Tested in FC, IF, IHC, WB. This antibody reacts with Human, Mouse, Rat.
Conjugate	Unconjugated
Application	Flow Cytometry, IF, IHC, WB
Clonality	Monoclonal OTI5F1
Formulation	PBS (pH 7.3) containing 1% stabilizing protein, 50% glycerol and 0.02% sodium azide. This antibody is supplied in a stabilized formulation. Compatibility with conjugation reactions depends on the chemistry of the conjugation method used. For conjugation methods that are not compatible with the stabilizing components present in this formulation, a carrier-free antibody format is required.
Storage Instructions	Store at -20°C for one year. For short term storage and frequent use, store at 4°C for up to one month. Avoid repeated freeze-thaw cycles.
Host	Mouse
Uniprot ID	Q14249

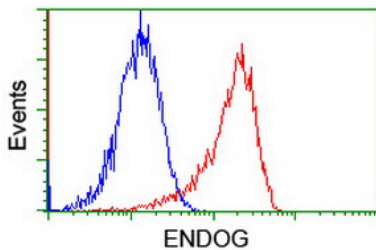
### Technical Details

Immunogen	Full length human recombinant protein of human ENDO G (NP_004426) produced in HEK293T cell.
Isotype	IgG1
Concentration	1 mg/ml
Purification	Purified from mouse ascites fluids or tissue culture supernatant by affinity chromatography (protein A/G)
Suggested Dilutions	WB: 1:500~2000 IHC: 1:150 IF: 1:100 Flow cytometry: 1:100

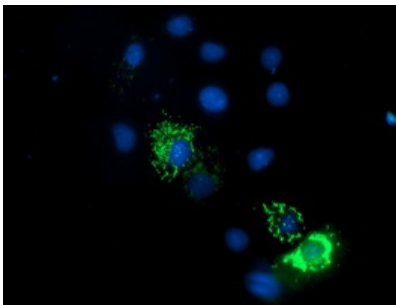
## Anti-Endo G (ENDO G) Mouse Monoclonal Antibody [Clone ID: OTI5F1] (M05147-1) Images



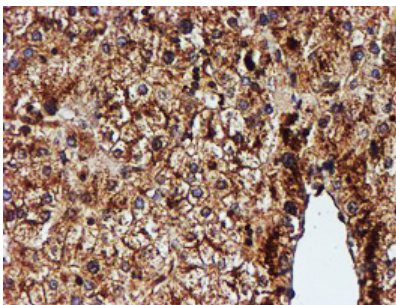
Flow cytometric Analysis of HeLa cells



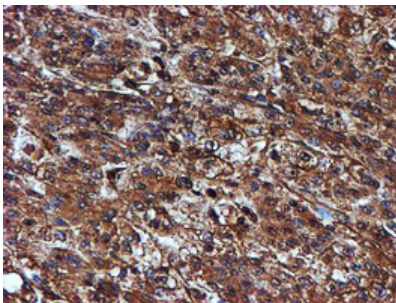
Flow cytometric Analysis of Jurkat cells



Anti-ENDOG mouse monoclonal antibody (M05147-1) immunofluorescent staining of COS7 cells transiently transfected by pCMV6-ENTRY ENDOG.

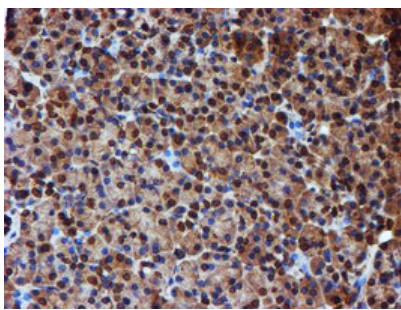


Immunohistochemical staining of paraffin-embedded Human liver tissue within the normal limits using anti-ENDOG mouse monoclonal antibody. (Heat-induced epitope retrieval by 10mM citric buffer)

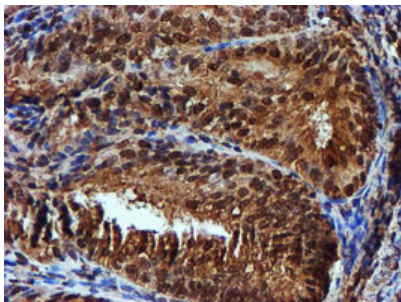


Immunohistochemical staining of paraffin-embedded Carcinoma of Human liver tissue using anti-ENDOG mouse monoclonal antibody. (Heat-induced epitope retrieval by 10mM citric buffer)

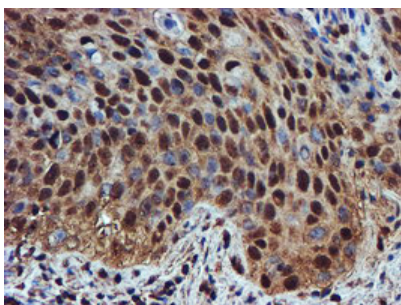
Immunohistochemical staining of paraffin-embedded Human



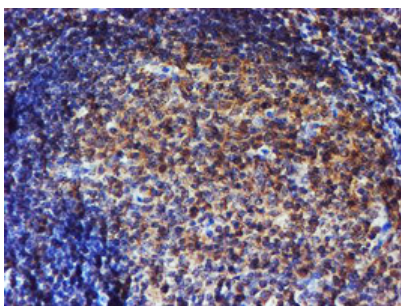
pancreas tissue within the normal limits using anti-ENDOG mouse monoclonal antibody. (Heat-induced epitope retrieval by 10mM citric buffer)



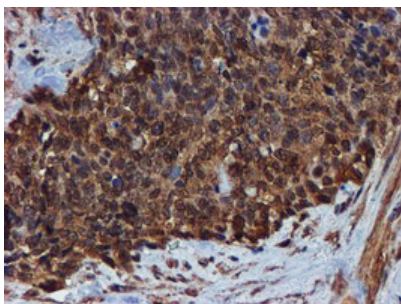
Immunohistochemical staining of paraffin-embedded Adenocarcinoma of Human endometrium tissue using anti-ENDOG mouse monoclonal antibody. (Heat-induced epitope retrieval by 10mM citric buffer)



Immunohistochemical staining of paraffin-embedded Carcinoma of Human bladder tissue using anti-ENDOG mouse monoclonal antibody. (Heat-induced epitope retrieval by 10mM citric buffer)

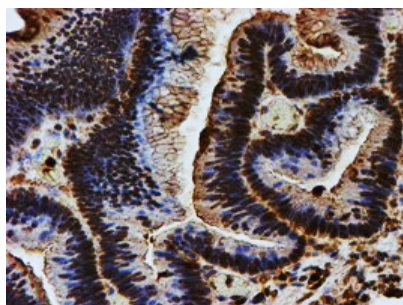


Immunohistochemical staining of paraffin-embedded Human tonsil within the normal limits using anti-ENDOG mouse monoclonal antibody. (Heat-induced epitope retrieval by 10mM citric buffer)

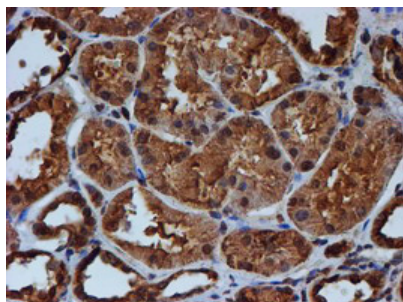


Immunohistochemical staining of paraffin-embedded Adenocarcinoma of Human breast tissue using anti-ENDOG mouse monoclonal antibody. (Heat-induced epitope retrieval by 10mM citric buffer)

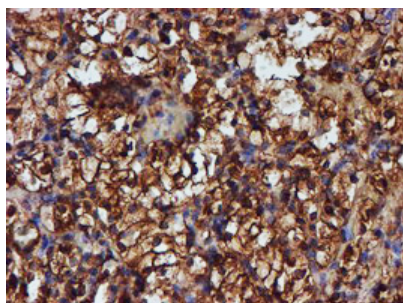
Immunohistochemical staining of paraffin-embedded Adenocarcinoma of Human colon tissue using anti-ENDOG



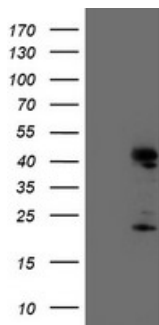
mouse monoclonal antibody. (Heat-induced epitope retrieval by 10mM citric buffer)



Immunohistochemical staining of paraffin-embedded Human Kidney tissue within the normal limits using anti-ENDOG mouse monoclonal antibody. (Heat-induced epitope retrieval by 10mM citric buffer)



Immunohistochemical staining of paraffin-embedded Carcinoma of Human kidney tissue using anti-ENDOG mouse monoclonal antibody. (Heat-induced epitope retrieval by 10mM citric buffer)



HEK293T cells were transfected with the pCMV6-ENTRY control (Left lane) or pCMV6-ENTRY ENDOG (Right lane) cDNA for 48 hrs and lysed. Equivalent amounts of cell lysates (5 ug per lane) were separated by SDS-PAGE and immunoblotted with anti-ENDOG.

## Submit a product review to Biocompare.com

Submit a review of this product to Biocompare.com to receive a \$20 Amazon.com giftcard! Your reviews help your fellow scientists make the right decisions. Thank you for your contribution.



Anti-Endo G (ENDOG) Mouse Monoclonal Antibody [Clone ID: OTI5F1]

For Research Use Only. Not for use in diagnostic procedures.