

## Anti-SIRPa / CD172a Reference Antibody (Hospital for Sick Children patent anti-SIRPA)

Catalog Number: M05151-3

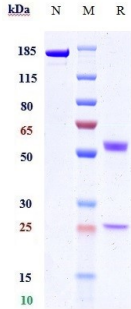
### Overview

Product Name	Anti-SIRPa / CD172a Reference Antibody (Hospital for Sick Children patent anti-SIRPA)
Reactive Species	Human
Description	Boster Bio Anti-SIRPa / CD172a Reference Antibody (Hospital for Sick Children patent anti-SIRPA) (Catalog # M05151-3). Tested in Flow Cytometry, ELISA, FTA. This antibody reacts with Human. Endotoxin: < 0.875EU/ug,determined by LAL method. Expression system: CHO Cell
Application	ELISA, Flow Cytometry, Functional Assay, Kinetics
Clonality	Monoclonal
Formulation	Purified monoclonal antibody supplied in PBS, pH6.0, without preservative.This antibody is purified through a protein A column.
Storage Instructions	Maintain refrigerated at 2–8°C for up to 2 weeks. For long-term storage, aliquot and store at -20°C to avoid repeated freeze-thaw cycles.
Uniprot ID	P78324

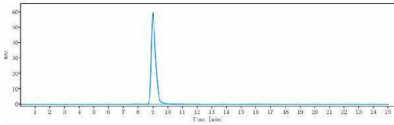
### Technical Details

Isotype	IgG4
Form	Liquid

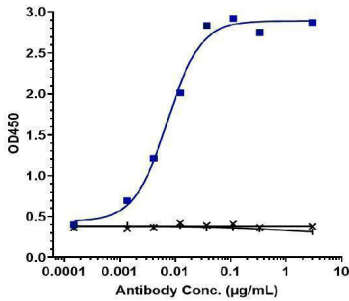
## Anti-SIRPa / CD172a Reference Antibody (Hospital for Sick Children patent anti-SIRPA) (M05151-3) Images



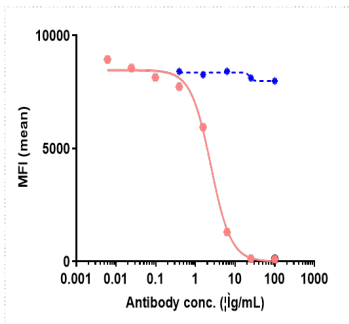
Anti-SIRPa/CD172a Reference Antibody (Hospital for Sick Children patent anti-SIRPA) on SDS-PAGE under reducing (R) condition. The gel was stained with Coomassie Blue. The purity of the protein is greater than 95%



The purity of Anti-SIRPa/CD172a Reference Antibody (Hospital for Sick Children patent anti-SIRPA) is more than 95%



Immobilized human SIRPalpha V1 FC at 4 µg/mL can bind Anti-SIRPa/CD172a Reference Antibody (Hospital for Sick Children patent anti-SIRPA)



Hospital for Sick Children patent anti-SIRPA FACS Blocking was evaluated using human CCRF-CEM cells. The IC<sub>50</sub> was approximately 3.289 µg/ml.

**Submit a product review to Biocompare.com**

Submit a review of this product to Biocompare.com to receive a \$20 Amazon.com giftcard! Your reviews help your fellow scientists make the right decisions. Thank you for your contribution.



Anti-SIRPa / CD172a Reference Antibody (Hospital for Sick Children patent anti-SIRPA)

For Research Use Only. Not for use in diagnostic procedures.