

Anti-RPL4 Antibody (N-Term)

Catalog Number: M05175

About RPL4

Protein transport. Probably involved in vesicular traffic (By similarity).

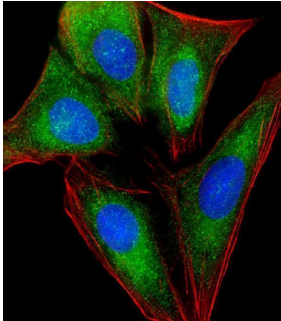
Overview

Product Name	Anti-RPL4 Antibody (N-Term)
Reactive Species	Human
Description	Boster Bio Anti-RPL4 Antibody (N-Term) (Catalog # M05175). Tested in WB, Flow Cytometry, IF application(s). This antibody reacts with Human.
Application	Flow Cytometry, IF, WB
Clonality	Polyclonal
Formulation	Purified polyclonal antibody supplied in PBS with 0.09% (W/V) sodium azide.
Storage Instructions	Maintain refrigerated at 2-8°C for up to 2 weeks. For long-term storage, store at -20°C in small aliquots to prevent freeze-thaw cycles.
Host	Rabbit
Uniprot ID	P36578

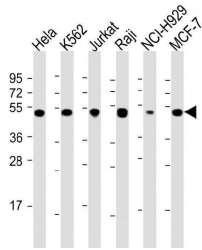
Technical Details

Immunogen	This RPL4 antibody is generated from a rabbit immunized with a KLH conjugated synthetic peptide between 119-149 amino acids from human RPL4.
Predicted Reactive Species	Bovine, Mouse
Isotype	Rabbit IgG
Purification	This antibody is purified through a protein A column, followed by peptide affinity purification.
Suggested Dilutions	IF: 1:25 WB: 1:2000 FC: 1:25

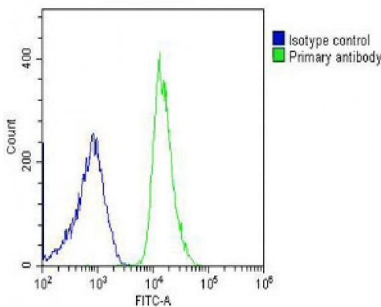
Anti-RPL4 Antibody (N-Term) (M05175) Images



Immunofluorescent analysis of 4% paraformaldehyde-fixed, 0.1% Triton X-100 permeabilized U-2 OS (human osteosarcoma cell line) cells labeling RPL4 with M05175 at 1/25 dilution, followed by Dylight® 488-conjugated goat anti-rabbit IgG secondary antibody at 1/200 dilution (green). Immunofluorescence image showing cytoplasm and nucleus staining on U-2 OS cell line. Cytoplasmic actin is detected with Dylight® 554 Phalloidin at 1/100 dilution (red). The nuclear counter stain is DAPI (blue).



All lanes : Anti-RPL4 Antibody (N-Term) at 1:2000 dilution
Lane 1: HeLa whole cell lysate
Lane 2: K562 whole cell lysate
Lane 3: Jurkat whole cell lysate
Lane 4: Raji whole cell lysate
Lane 5: NCI-H929 whole cell lysate
Lane 6: MCF-7 whole cell lysate
Lysates/proteins at 20 µg per lane.
Secondary Goat Anti-Rabbit IgG, (H+L), Peroxidase conjugated at 1/10000 dilution. Predicted band size : 48 kDa
Blocking/Dilution buffer: 5% NFDN/TBST.



Overlay histogram showing U-2OS cells stained with M05175 (green line). The cells were fixed with 2% paraformaldehyde (10 min) and then permeabilized with 90% methanol for 10 min. The cells were then incubated in 2% bovine serum albumin to block non-specific protein-protein interactions followed by the antibody (M05175, 1:25 dilution) for 60 min at 37°C. The secondary antibody used was Goat-Anti-Rabbit IgG, DyLight® 488 Conjugated Highly Cross-Adsorbed at 1/200 dilution for 40 min at 37°C. Isotype control antibody (blue line) was rabbit IgG (1g/1x10⁶ cells) used under the same conditions. Acquisition of >10,000 events was performed.

Submit a product review to Biocompare.com

Submit a review of this product to Biocompare.com to receive a \$20 Amazon.com giftcard! Your reviews help your fellow scientists make the right decisions. Thank you for your contribution.



Anti-RPL4 Antibody (N-Term)

For Research Use Only. Not for use in diagnostic procedures.