

## Anti-Placental lactogen CSH1 Monoclonal Antibody

Catalog Number: M05177

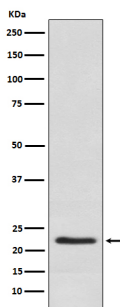
### Overview

Product Name	Anti-Placental lactogen CSH1 Monoclonal Antibody
Reactive Species	Human
Description	Boster Bio Anti-Placental lactogen CSH1 Monoclonal Antibody catalog # M05177. Tested in WB, IHC, IP applications. This antibody reacts with Human.
Application	IP, IHC, WB
Clonality	Monoclonal AFGE-3
Formulation	Rabbit IgG in stabilizing components, phosphate buffered saline, pH 7.4, 150mM NaCl, 0.02% sodium azide and 50% glycerol. *This antibody is supplied in a stabilized formulation. Compatibility with conjugation reactions depends on the chemistry of the conjugation method used. For conjugation methods that are not compatible with the stabilizing components present in this formulation, a carrier-free antibody format is required.
Storage Instructions	Store at -20°C for one year. For short term storage and frequent use, store at 4°C for up to one month. Avoid repeated freeze-thaw cycles.
Host	Rabbit
Uniprot ID	P01243/P0DML2/P0DML3

### Technical Details

Immunogen	A synthesized peptide derived from human Placental lactogen Produced only during pregnancy and is involved in stimulating lactation, fetal growth and metabolism. Does not interact with GHR but only activates PRLR through zinc-induced dimerization.
Isotype	Rabbit IgG
Form	Liquid
Concentration	0.5mg/ml
Purification	Affinity-chromatography
Suggested Dilutions	WB 1:1000-1:5000 IHC 1:50-1:200 IP 1:50

## Anti-Placental lactogen CSH1 Monoclonal Antibody (M05177) Images



Western blot analysis of Placental lactogen expression in Human placenta lysate.

### Submit a product review to Biocompare.com

Submit a review of this product to Biocompare.com to receive a \$20 Amazon.com giftcard! Your reviews help your fellow scientists make the right decisions. Thank you for your contribution.



Anti-Placental lactogen CSH1 Monoclonal Antibody

For Research Use Only. Not for use in diagnostic procedures.