

## Anti-beta IV Tubulin (TUBB4A) Mouse Monoclonal Antibody [Clone ID: OTI3F1]

Catalog Number: M05184-1

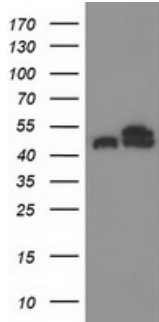
### Overview

Product Name	Anti-beta IV Tubulin (TUBB4A) Mouse Monoclonal Antibody [Clone ID: OTI3F1]
Reactive Species	Dog, Human, Monkey, Mouse, Rat
Description	Boster Bio TUBB4 (beta IV Tubulin) mouse monoclonal antibody, clone OTI3F1 (formerly 3F1). Catalog# M05184-1. Tested in FC, IF, IHC, WB. This antibody reacts with Human, Monkey, Mouse, Rat, Dog.
Application	Flow Cytometry, IF, IHC, WB
Clonality	Monoclonal OTI3F1
Formulation	PBS (PH 7.3) containing 1% BSA, 50% glycerol and 0.02% sodium azide.
Storage Instructions	Store at -20°C as received.
Host	Mouse
Uniprot ID	P04350

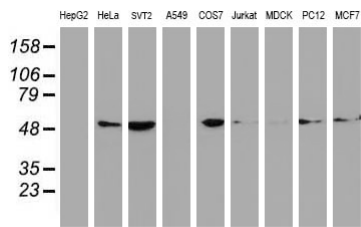
### Technical Details

Immunogen	Full length human recombinant protein of human TUBB4 (NP_006078) produced in HEK293T cell.
Isotype	IgG2a
Concentration	1 mg/ml
Purification	Purified from mouse ascites fluids or tissue culture supernatant by affinity chromatography (protein A/G)
Suggested Dilutions	Dilute the sample so that the expected range of concentrations fall within the detection range of this kit. If the expected range of concentration is unknown, a pilot test should be conducted to decide the optimal dilution ratio for your samples. Some PubMed article(s) citing the expression level of this target are as follows:

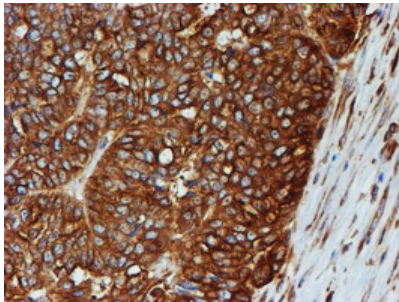
## Anti-beta IV Tubulin (TUBB4A) Mouse Monoclonal Antibody [Clone ID: OTI3F1] (M05184-1) Images



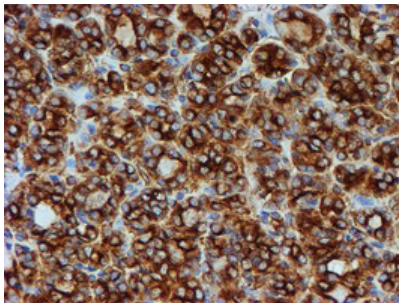
HEK293T cells were transfected with the pCMV6-ENTRY control (Left lane) or pCMV6-ENTRY TUBB4 (Right lane) cDNA for 48 hrs and lysed. Equivalent amounts of cell lysates (5 ug per lane) were separated by SDS-PAGE and immunoblotted with anti-TUBB4.



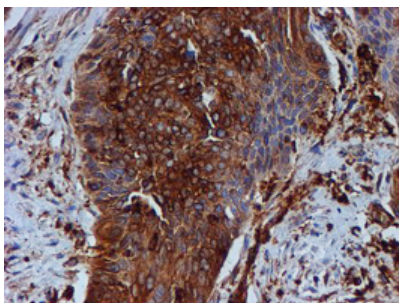
Western blot analysis of extracts (35ug) from 9 different cell lines by using anti-TUBB4 monoclonal antibody.



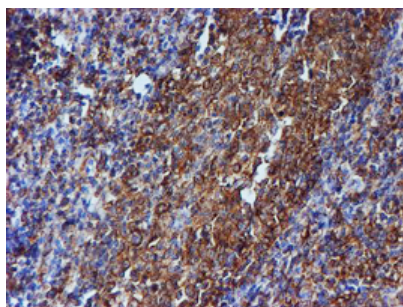
Immunohistochemical staining of paraffin-embedded Adenocarcinoma of Human ovary tissue using anti-TUBB4 mouse monoclonal antibody. (Heat-induced epitope retrieval by 10mM citric buffer)



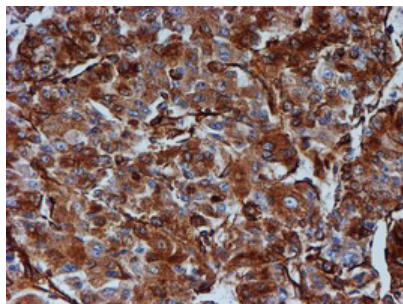
Immunohistochemical staining of paraffin-embedded Carcinoma of Human thyroid tissue using anti-TUBB4 mouse monoclonal antibody. (Heat-induced epitope retrieval by 10mM citric buffer)



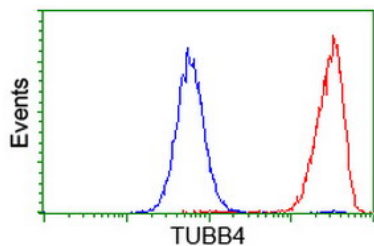
Immunohistochemical staining of paraffin-embedded Carcinoma of Human bladder tissue using anti-TUBB4 mouse monoclonal antibody. (Heat-induced epitope retrieval by 10mM citric buffer)



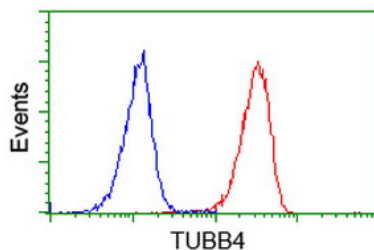
Immunohistochemical staining of paraffin-embedded Human tonsil within the normal limits using anti-TUBB4 mouse monoclonal antibody. (Heat-induced epitope retrieval by 10mM citric buffer)



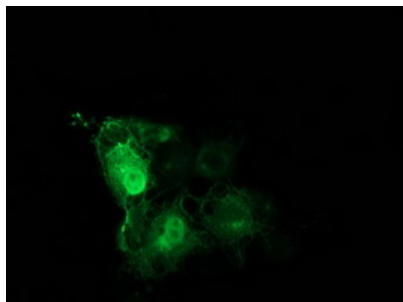
Immunohistochemical staining of paraffin-embedded Carcinoma of Human liver tissue using anti-TUBB4 mouse monoclonal antibody. (Heat-induced epitope retrieval by 10mM citric buffer)



Flow cytometric Analysis of Hela cells



Flow cytometric Analysis of Jurkat cells



Anti-TUBB4 mouse monoclonal antibody (M05184-1) immunofluorescent staining of COS7 cells transiently transfected by pCMV6-ENTRY TUBB4.

**Submit a product review to Biocompare.com**

Submit a review of this product to Biocompare.com to receive a \$20 Amazon.com giftcard! Your reviews help your fellow scientists make the right decisions. Thank you for your contribution.



Anti-beta IV Tubulin (TUBB4A) Mouse Monoclonal Antibody [Clone ID: OTI3F1]