

Anti-Hu CD169 Purified SIGLEC1 Monoclonal Antibody

Catalog Number: M05186

About SIGLEC1

CD169, also known as Siglec-1 or sialoadhesin, is a type I transmembrane glycoprotein of the sialic acid binding Ig-like lectin family. It binds to sialylated glycoproteins on various haematopoietic cells to mediate cell-cell interactions. CD169 is expressed on a subset of macrophages and dendritic cells. On CD14+ monocytes its expression can be induced by interferon alpha and gamma. High expression of CD169 is observed in the spleen, lymph nodes, bone marrow, and under inflammatory conditions rheumatoid arthritis and atherosclerosis, lower in the liver, lungs and gut. It has been shown to be involved in antigen presentation to invariant NKT cells, which play an important role in the innate arm of the immune system to modulate the subsequent acquired immune responses.

Overview

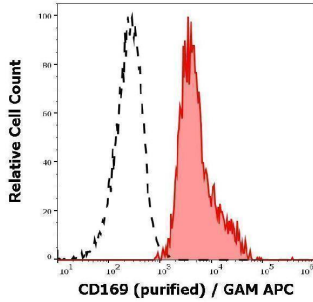
Product Name	Anti-Hu CD169 Purified SIGLEC1 Monoclonal Antibody
Reactive Species	Human
Description	Boster Bio Anti-Hu CD169 Purified SIGLEC1 Monoclonal Antibody (Catalog# M05186). Tested in Flow Cytometry, IP, WB, IHC-F application(s). This antibody reacts with Human.
Application	Flow Cytometry, IP, IHC-F, WB
Clonality	Monoclonal 7-239
Formulation	Phosphate buffered saline (PBS), pH 7.4, 15 mM sodium azide
Storage Instructions	Store at 2-8°C. Do not freeze.
Host	Mouse
Uniprot ID	Q9BZZ2

Technical Details

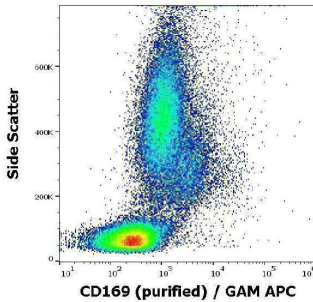
Immunogen	Human rhinovirus 14-infected monocyte-derived dendritic cells. The mouse monoclonal antibody 7-239 recognizes an extracellular epitope of CD169 (sialoadhesin, Siglec-1), a 210 kDa type I transmembrane glycoprotein expressed on macrophages and dendritic cells.
Predicted Reactive Species	Primate
Cross Reactivity	This antibody does not cross-react with Thy-1.1 alloantigen.
Isotype	Mouse IgG1
Form	Liquid
Concentration	1 mg/ml

Purification	Purified by protein-A affinity chromatography.
Suggested Dilutions	Flow cytometry: 1-4 µg/ml

Anti-Hu CD169 Purified SIGLEC1 Monoclonal Antibody (M05186) Images



Separation of human monocytes (red-filled) from CD169 negative lymphocytes (black-dashed) in flow cytometry analysis (surface staining) of human peripheral whole blood using anti-human CD169 (7-239) purified antibody (concentration in sample 1 µg/ml, GAM APC).



Flow cytometry surface staining pattern of human peripheral whole blood stained using anti-human CD169 (7-239) purified antibody (concentration in sample 1 µg/ml, GAM APC).

Submit a product review to Biocompare.com

Submit a review of this product to Biocompare.com to receive a \$20 Amazon.com giftcard! Your reviews help your fellow scientists make the right decisions. Thank you for your contribution.



Anti-Hu CD169 Purified SIGLEC1 Monoclonal Antibody

For Research Use Only. Not for use in diagnostic procedures.