

Anti-ASF1B Mouse Monoclonal Antibody [Clone ID: OTI1H5]

Catalog Number: M05211

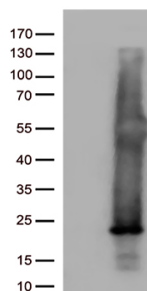
Overview

Product Name	Anti-ASF1B Mouse Monoclonal Antibody [Clone ID: OTI1H5]
Reactive Species	Human, Mouse, Rat
Description	Boster Bio ASF1B mouse monoclonal antibody, clone OTI1H5. Catalog# M05211. Tested in WB. This antibody reacts with Human, Mouse, Rat.
Application	WB
Clonality	Monoclonal OTI1H5
Formulation	PBS (PH 7.3) containing 1% BSA, 50% glycerol and 0.02% sodium azide.
Storage Instructions	Store at -20°C as received.
Host	Mouse
Uniprot ID	Q9NVP2

Technical Details

Immunogen	Full length human recombinant protein of human ASF1B (NP_060624) produced in E.coli.
Isotype	IgG2b
Concentration	1 mg/ml
Purification	Purified from mouse ascites fluids or tissue culture supernatant by affinity chromatography (protein A/G)
Suggested Dilutions	Dilute the sample so that the expected range of concentrations fall within the detection range of this kit. If the expected range of concentration is unknown, a pilot test should be conducted to decide the optimal dilution ratio for your samples. Some PubMed article(s) citing the expression level of this target are as follows:

Anti-ASF1B Mouse Monoclonal Antibody [Clone ID: OTI1H5] (M05211) Images



HEK293T cells were transfected with the pCMV6-ENTRY control (Left lane) or pCMV6-ENTRY ASF1B (Right lane) cDNA for 48 hrs and lysed. Equivalent amounts of cell lysates (5 ug per lane) were separated by SDS-PAGE and immunoblotted with anti-ASF1B (1:500).

Submit a product review to Biocompare.com

Submit a review of this product to Biocompare.com to receive a \$20 Amazon.com giftcard! Your reviews help your fellow scientists make the right decisions. Thank you for your contribution.



Anti-ASF1B Mouse Monoclonal Antibody [Clone ID: OTI1H5]