

## Anti-Caspase 5 CASP5 Rabbit Monoclonal Antibody

Catalog Number: M05259

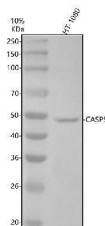
### Overview

|                      |  |
|----------------------|--|
| Product Name         | Anti-Caspase 5 CASP5 Rabbit Monoclonal Antibody  |
| Reactive Species     | Human  |
| Description          | Boster Bio Anti-Caspase 5 CASP5 Rabbit Monoclonal Antibody catalog # M05259. Tested in WB, IHC, ICC/IF, IP applications. This antibody reacts with Human.  |
| Application          | IP, IF, IHC, ICC, WB   |
| Clonality            | Monoclonal GOI-3   |
| Formulation          | Rabbit IgG in stabilizing components, phosphate buffered saline, pH 7.4, 150mM NaCl, 0.02% sodium azide and 50% glycerol.<br>*This antibody is supplied in a stabilized formulation.<br>Compatibility with conjugation reactions depends on the chemistry of the conjugation method used. For conjugation methods that are not compatible with the stabilizing components present in this formulation, a carrier-free antibody format is required. |
| Storage Instructions | Store at -20°C for one year. For short term storage and frequent use, store at 4°C for up to one month. Avoid repeated freeze-thaw cycles.   |
| Host                 | Rabbit   |
| Uniprot ID           | P51878   |

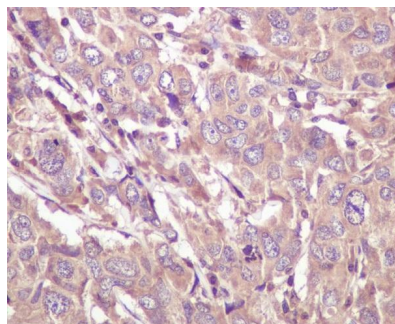
### Technical Details

|                     |   |
|---------------------|---|
| Immunogen           | A synthesized peptide derived from human Caspase 5          |
| Isotype             | Rabbit IgG  |
| Form                | Liquid  |
| Concentration       | 0.5mg/ml  |
| Purification        | Affinity-chromatography                                     |
| Suggested Dilutions | WB 1:500-2000<br>IHC 1:50-200<br>ICC/IF 1:50-200<br>IP 1:20 |

## Anti-Caspase 5 CASP5 Rabbit Monoclonal Antibody (M05259) Images



Western blot analysis of Caspase 5/CASP5 using anti-Caspase 5/CASP5 antibody (M05259). Electrophoresis was performed on a 10% SDS-PAGE gel at 80V (Stacking gel) / 120V (Resolving gel) for 2 hours. The sample well of each lane was loaded with 30 ug of sample under reducing conditions. Lane 1: human HT1080 whole cell lysates. After electrophoresis, proteins were transferred to a nitrocellulose membrane at 150 mA for 50-90 minutes. Blocked the membrane with 5% non-fat milk/TBS for 1.5 hour at RT. The membrane was incubated with rabbit anti-Caspase 5/CASP5 antigen affinity purified monoclonal antibody (M05259) at 1:1000 overnight at 4°C, then washed with TBS-0.1%Tween 3 times with 5 minutes each and probed with a goat anti-rabbit IgG-HRP secondary antibody at a dilution of 1:5000 for 1.5 hour at RT. The signal is developed using an ECL Plus Western Blotting Substrate (Catalog # AR1196-200) with Tanon 5200 system. A specific band was detected for Caspase 5/CASP5 at approximately 50 kDa. The expected band size for Caspase 5/CASP5 is at 50 kDa.



Immunohistochemical analysis of paraffin-embedded human breast cancer, using Caspase 5 Antibody.

### Submit a product review to [Biocompare.com](https://www.biocompare.com)

Submit a review of this product to [Biocompare.com](https://www.biocompare.com) to receive a \$20 Amazon.com giftcard! Your reviews help your fellow scientists make the right decisions. Thank you for your contribution.



Anti-Caspase 5 CASP5 Rabbit Monoclonal Antibody

For Research Use Only. Not for use in diagnostic procedures.