

Anti-mu Crystallin (CRYM) Mouse Monoclonal Antibody [Clone ID: OTI1G7]

Catalog Number: M05298

Overview

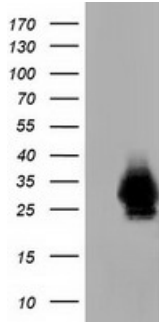
| | |
|----------------------|--|
| Product Name | Anti-mu Crystallin (CRYM) Mouse Monoclonal Antibody [Clone ID: OTI1G7] |
| Reactive Species | Human, Mouse, Rat |
| Description | Boster Bio CRYM (mu Crystallin) mouse monoclonal antibody, clone OTI1G7 (formerly 1G7). Catalog# M05298. Tested in FC, IF, IHC, WB. This antibody reacts with Human, Mouse, Rat. |
| Application | Flow Cytometry, IF, IHC, WB |
| Clonality | Monoclonal OTI1G7 |
| Formulation | PBS (PH 7.3) containing 1% BSA, 50% glycerol and 0.02% sodium azide. |
| Storage Instructions | Store at -20°C as received. |
| Host | Mouse |
| Uniprot ID | Q14894 |

Technical Details

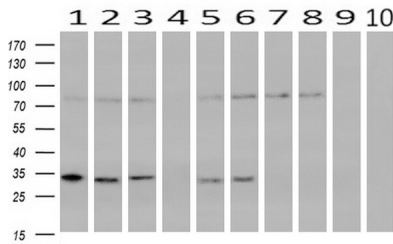
| | |
|---------------------|--|
| Immunogen | Full length human recombinant protein of human CRYM (NP_001879) produced in HEK293T cell. |
| Isotype | IgG2b |
| Concentration | 1 mg/ml |
| Purification | Purified from mouse ascites fluids or tissue culture supernatant by affinity chromatography (protein A/G) |
| Suggested Dilutions | Dilute the sample so that the expected range of concentrations fall within the detection range of this kit. If the expected range of concentration is unknown, a pilot test should be conducted to decide the optimal dilution ratio for your samples. Some PubMed article(s) citing the expression level of this target are as follows: |

Anti-mu Crystallin (CRYM) Mouse Monoclonal Antibody [Clone ID: OTI1G7] (M05298)

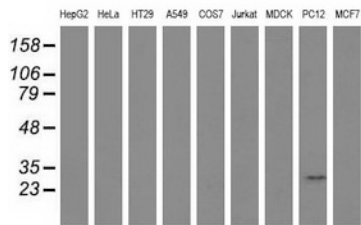
Images



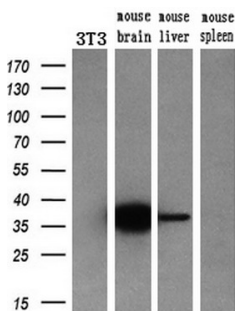
HEK293T cells were transfected with the pCMV6-ENTRY control (Left lane) or pCMV6-ENTRY CRYM (Right lane) cDNA for 48 hrs and lysed. Equivalent amounts of cell lysates (5 ug per lane) were separated by SDS-PAGE and immunoblotted with anti-CRYM.



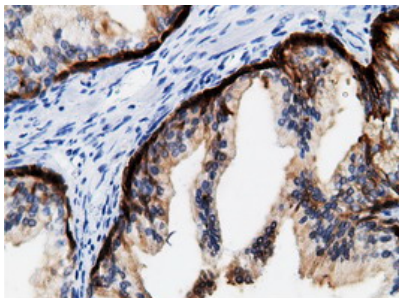
Western blot analysis of extracts (10ug) from 10 Human tissue by using anti-CRYM monoclonal antibody at 1:200 (1: Testis; 2: Omentum; 3: Uterus; 4: Breast; 5: Brain; 6: Liver; 7: Ovary; 8: Thyroid gland; 9: colon; 10: spleen).



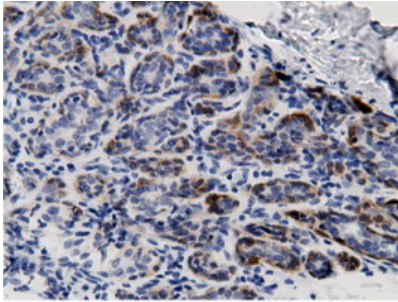
Western blot analysis of extracts (35ug) from 9 different cell lines by using anti-CRYM monoclonal antibody.



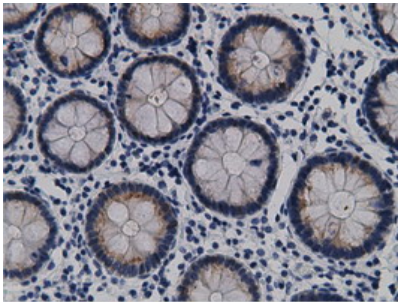
Western blot analysis of extracts (10ug) from a mouse cell line and 3 different mouse tissues by using anti-CRYM monoclonal antibody (1:200).



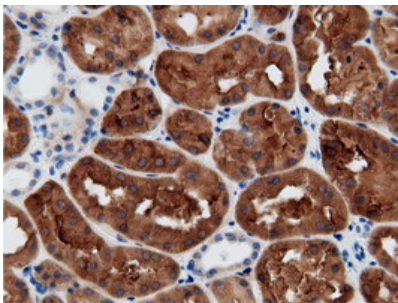
Immunohistochemical staining of paraffin-embedded Human prostate tissue within the normal limits using anti-CRYM mouse monoclonal antibody. (Heat-induced epitope retrieval by 10mM citric buffer)



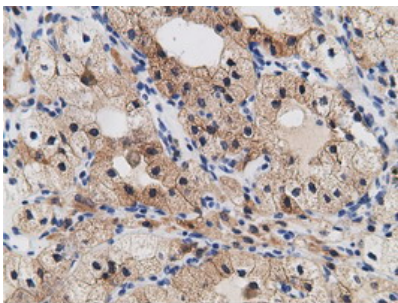
Immunohistochemical staining of paraffin-embedded Human breast tissue within the normal limits using anti-CRYM mouse monoclonal antibody. (Heat-induced epitope retrieval by 10mM citric buffer)



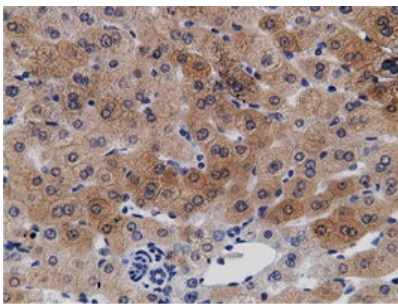
Immunohistochemical staining of paraffin-embedded Human colon tissue within the normal limits using anti-CRYM mouse monoclonal antibody. (Heat-induced epitope retrieval by 10mM citric buffer)



Immunohistochemical staining of paraffin-embedded Human Kidney tissue within the normal limits using anti-CRYM mouse monoclonal antibody. (Heat-induced epitope retrieval by 10mM citric buffer)

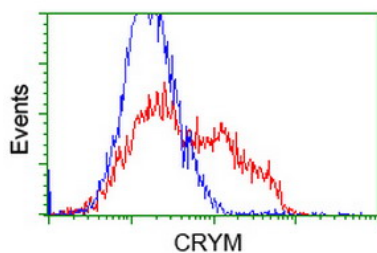


Immunohistochemical staining of paraffin-embedded Carcinoma of Human kidney tissue using anti-CRYM mouse monoclonal antibody. (Heat-induced epitope retrieval by 10mM citric buffer)

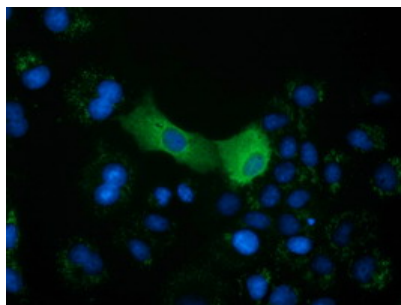


Immunohistochemical staining of paraffin-embedded Human liver tissue within the normal limits using anti-CRYM mouse monoclonal antibody. (Heat-induced epitope retrieval by 10mM citric buffer)

HEK293T cells transfected with either CRYM (Myc-DDK-tagged) overexpress plasmid (Red) or empty vector control



plasmid (Blue) were immunostained by anti-CRYM antibody (M05298)



Anti-CRYM mouse monoclonal antibody (M05298) immunofluorescent staining of COS7 cells transiently transfected by pCMV6-ENTRY CRYM.

Submit a product review to Biocompare.com

Submit a review of this product to Biocompare.com to receive a \$20 Amazon.com giftcard! Your reviews help your fellow scientists make the right decisions. Thank you for your contribution.



Anti-mu Crystallin (CRYM) Mouse Monoclonal Antibody [Clone ID: OTI1G7]