

Anti-GLS2 Antibody

Catalog Number: M05334

About GLS2

Plays an important role in the regulation of glutamine catabolism. Promotes mitochondrial respiration and increases ATP generation in cells by catalyzing the synthesis of glutamate and alpha-ketoglutarate. Increases cellular anti-oxidant function via NADH and glutathione production. May play a role in preventing tumor proliferation.

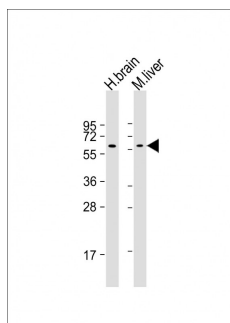
Overview

Product Name	Anti-GLS2 Antibody
Reactive Species	Human, Mouse
Description	Boster Bio Anti-GLS2 Antibody (Catalog # M05334). Tested in WB, IHC-P application(s). This antibody reacts with Human, Mouse.
Application	IHC-P, WB
Clonality	Monoclonal 1758CT879.217.60
Formulation	Purified monoclonal antibody supplied in PBS with 0.09% (W/V) sodium azide.
Storage Instructions	Maintain refrigerated at 2-8°C for up to 2 weeks. For long-term storage, store at -20°C in small aliquots to prevent freeze-thaw cycles.
Host	Mouse
Uniprot ID	Q9UI32

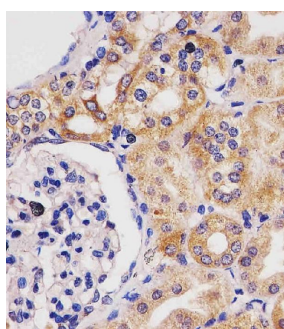
Technical Details

Immunogen	This GLS2 antibody is generated from a mouse immunized with a recombinant protein of human GLS2.
Predicted Reactive Species	Mouse
Isotype	IgG1,k
Purification	This antibody is purified through a protein G column, followed by dialysis against PBS.
Suggested Dilutions	WB: 1:1000-1:2000 IHC-P: 1:25

Anti-GLS2 Antibody (M05334) Images



All lanes : Anti-GLS2 Antibody at 1:1000-1:2000 dilution
Lane 1: human brain lysate
Lane 2: mouse liver lysate
Lysates/proteins at 20 µg per lane. Secondary Goat Anti-mouse IgG, (H+L), Peroxidase conjugated at 1/10000 dilution. Predicted band size : 66 kDa
Blocking/Dilution buffer: 5% NFDM/TBST.



M05334 staining GLS2 in human kidney tissue sections by Immunohistochemistry (IHC-P -paraformaldehyde-fixed, paraffin-embedded sections). Tissue was fixed with formaldehyde and blocked with 3% BSA for 0.5 hour at room temperature; antigen retrieval was by heat mediation with a citrate buffer (pH6). Samples were incubated with primary antibody (1/25) for 1 hours at 37°C. A undiluted biotinylated goat polyvalent antibody was used as the secondary antibody.

Submit a product review to [Biocompare.com](https://www.biocompare.com)

Submit a review of this product to [Biocompare.com](https://www.biocompare.com) to receive a \$20 Amazon.com giftcard! Your reviews help your fellow scientists make the right decisions. Thank you for your contribution.



Anti-GLS2 Antibody

For Research Use Only. Not for use in diagnostic procedures.