

Anti-KMT5A / SETD8 / Pr-SET7 Monoclonal Antibody

Catalog Number: M05349

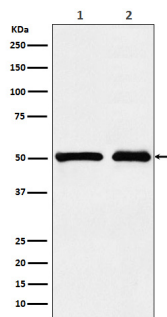
Overview

Product Name	Anti-KMT5A / SETD8 / Pr-SET7 Monoclonal Antibody
Reactive Species	Human, Mouse, Rat
Description	Boster Bio Anti-KMT5A / SETD8 / Pr-SET7 Monoclonal Antibody catalog # M05349. Tested in WB, Flow Cytometry applications. This antibody reacts with Human, Mouse, Rat.
Application	Flow Cytometry, WB
Clonality	Monoclonal ADHO-11
Formulation	Rabbit IgG in stabilizing components, phosphate buffered saline, pH 7.4, 150mM NaCl, 0.02% sodium azide and 50% glycerol. *This antibody is supplied in a stabilized formulation. Compatibility with conjugation reactions depends on the chemistry of the conjugation method used. For conjugation methods that are not compatible with the stabilizing components present in this formulation, a carrier-free antibody format is required.
Storage Instructions	Store at -20°C for one year. For short term storage and frequent use, store at 4°C for up to one month. Avoid repeated freeze-thaw cycles.
Host	Rabbit
Uniprot ID	Q9NQ1

Technical Details

Immunogen	A synthesized peptide derived from human KMT5A / SETD8 / Pr-SET7 Protein-lysine N-methyltransferase that monomethylates both histones and non-histone proteins. Specifically monomethylates 'Lys-20' of histone H4 (H4K20me1) . H4K20me1 is enriched during mitosis and represents a specific tag for epigenetic transcriptional repression. Mainly functions in euchromatin regions, thereby playing a central role in the silencing of euchromatic genes.
Isotype	Rabbit IgG
Form	Liquid
Concentration	0.5mg/ml
Purification	Affinity-chromatography
Suggested Dilutions	WB 1:500-2000 FC 1:100

Anti-KMT5A / SETD8 / Pr-SET7 Monoclonal Antibody (M05349) Images



Western blot analysis of KMT5A / SETD8 / Pr-SET7 expression in (1) 293T cell lysate; (2) NIH/3T3 cell lysate.

Submit a product review to Biocompare.com

Submit a review of this product to Biocompare.com to receive a \$20 Amazon.com giftcard! Your reviews help your fellow scientists make the right decisions. Thank you for your contribution.



Anti-KMT5A / SETD8 / Pr-SET7 Monoclonal Antibody

For Research Use Only. Not for use in diagnostic procedures.