

## Anti-Syntrophin alpha 1 (SNTA1) Mouse Monoclonal Antibody [Clone ID: OTI1H10]

Catalog Number: M05370

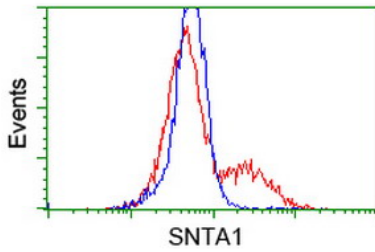
### Overview

Product Name	Anti-Syntrophin alpha 1 (SNTA1) Mouse Monoclonal Antibody [Clone ID: OTI1H10]
Reactive Species	Dog, Human, Monkey, Mouse, Rat
Description	Boster Bio SNTA1 (Syntrophin alpha 1) mouse monoclonal antibody, clone OTI1H10 (formerly 1H10). Catalog# M05370. Tested in FC, IF, WB. This antibody reacts with Human, Monkey, Mouse, Rat, Dog.
Conjugate	Unconjugated
Application	Flow Cytometry, IF, WB
Clonality	Monoclonal OTI1H10
Formulation	PBS (pH 7.3) containing 1% stabilizing protein, 50% glycerol and 0.02% sodium azide. This antibody is supplied in a stabilized formulation. Compatibility with conjugation reactions depends on the chemistry of the conjugation method used. For conjugation methods that are not compatible with the stabilizing components present in this formulation, a carrier-free antibody format is required.
Storage Instructions	Store at -20°C for one year. For short term storage and frequent use, store at 4°C for up to one month. Avoid repeated freeze-thaw cycles.
Host	Mouse
Uniprot ID	Q13424

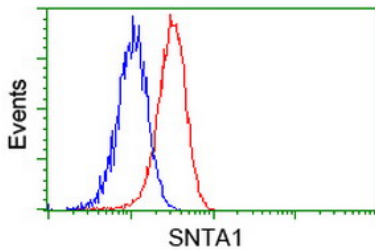
### Technical Details

Immunogen	Full length human recombinant protein of human SNTA1 (NP_003089) produced in HEK293T cell.
Isotype	IgG1
Concentration	0.76 mg/ml
Purification	Purified from mouse ascites fluids or tissue culture supernatant by affinity chromatography (protein A/G)
Suggested Dilutions	WB 1:500~2000 IF 1:100 Flow Cytometry 1:100

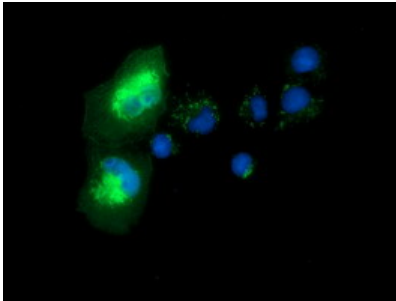
## Anti-Syntrophin alpha 1 (SNTA1) Mouse Monoclonal Antibody [Clone ID: OTI1H10] (M05370) Images



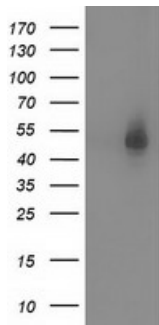
HEK293T cells transfected with either SNTA1 (Myc-DDK-tagged) overexpress plasmid (Red) or empty vector control plasmid (Blue) were immunostained by anti-SNTA1 antibody (M05370)



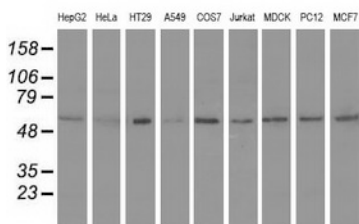
Flow cytometric Analysis of HeLa cells



Anti-SNTA1 mouse monoclonal antibody (M05370) immunofluorescent staining of COS7 cells transiently transfected by pCMV6-ENTRY SNTA1.



HEK293T cells were transfected with the pCMV6-ENTRY control (Left lane) or pCMV6-ENTRY SNTA1 (Right lane) cDNA for 48 hrs and lysed. Equivalent amounts of cell lysates (5 ug per lane) were separated by SDS-PAGE and immunoblotted with anti-SNTA1.



Western blot analysis of extracts (35ug) from 9 different cell lines by using anti-SNTA1 monoclonal antibody.

## Submit a product review to Biocompare.com

Submit a review of this product to Biocompare.com to receive a \$20 Amazon.com giftcard! Your reviews help your fellow scientists make the right decisions. Thank you for your contribution.



Anti-Syntrophin alpha 1 (SNTA1) Mouse Monoclonal Antibody [Clone ID: OT11H10]

For Research Use Only. Not for use in diagnostic procedures.