

## Anti-ISCU Mouse Monoclonal Antibody [Clone ID: OTI4F5]

Catalog Number: M05447

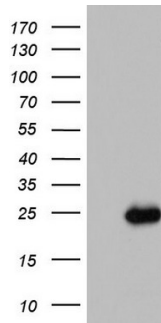
### Overview

Product Name	Anti-ISCU Mouse Monoclonal Antibody [Clone ID: OTI4F5]
Reactive Species	Human, Mouse, Rat
Description	Boster Bio ISCU mouse monoclonal antibody, clone OTI4F5 (formerly 4F5). Catalog# M05447. Tested in IHC, WB. This antibody reacts with Human, Mouse, Rat.
Application	IHC, WB
Clonality	Monoclonal OTI4F5
Formulation	PBS (pH 7.3) containing 1% stabilizing protein, 50% glycerol and 0.02% sodium azide. This antibody is supplied in a stabilized formulation. Compatibility with conjugation reactions depends on the chemistry of the conjugation method used. For conjugation methods that are not compatible with the stabilizing components present in this formulation, a carrier-free antibody format is required.
Storage Instructions	Store at -20°C as received.
Host	Mouse
Uniprot ID	Q9H1K1

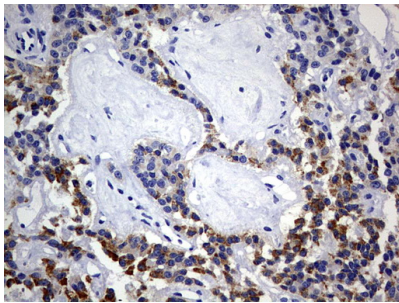
### Technical Details

Immunogen	Full length human recombinant protein of human ISCU (NP_055116) produced in E.coli.
Isotype	IgG1
Concentration	1 mg/ml
Purification	Purified from mouse ascites fluids or tissue culture supernatant by affinity chromatography (protein A/G)
Suggested Dilutions	WB 1:2000 IHC 1:150

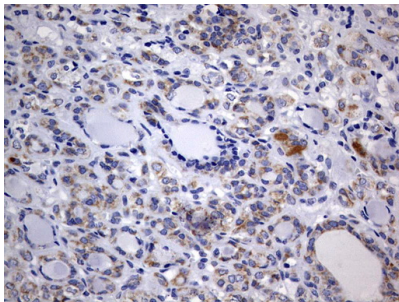
## Anti-ISCU Mouse Monoclonal Antibody [Clone ID: OTI4F5] (M05447) Images



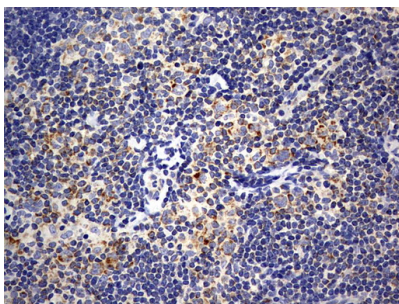
HEK293T cells were transfected with the pCMV6-ENTRY control (Left lane) or pCMV6-ENTRY ISCU (Right lane) cDNA for 48 hrs and lysed. Equivalent amounts of cell lysates (5 ug per lane) were separated by SDS-PAGE and immunoblotted with anti-ISCU.



Immunohistochemical staining of paraffin-embedded Carcinoma of Human pancreas tissue using anti-ISCU mouse monoclonal antibody. (Heat-induced epitope retrieval by 10mM citric buffer)



Immunohistochemical staining of paraffin-embedded Carcinoma of Human thyroid tissue using anti-ISCU mouse monoclonal antibody. (Heat-induced epitope retrieval by 10mM citric buffer)



Immunohistochemical staining of paraffin-embedded Human lymphoma tissue using anti-ISCU mouse monoclonal antibody. (Heat-induced epitope retrieval by 10mM citric buffer)

**Submit a product review to Biocompare.com**

Submit a review of this product to Biocompare.com to receive a \$20 Amazon.com giftcard! Your reviews help your fellow scientists make the right decisions. Thank you for your contribution.



For Research Use Only. Not for use in diagnostic procedures.