

Anti-Kappa light chain IGKC Rabbit Monoclonal Antibody

Catalog Number: M05470-1

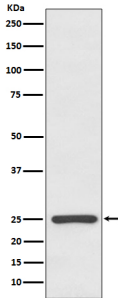
Overview

Product Name	Anti-Kappa light chain IGKC Rabbit Monoclonal Antibody
Reactive Species	Human
Description	Boster Bio Anti-Kappa light chain IGKC Rabbit Monoclonal Antibody catalog # M05470-1. Tested in WB, IHC, ICC/IF, IP applications. This antibody reacts with Human.
Application	IP, IF, IHC, ICC, WB
Clonality	Monoclonal AADO-9
Formulation	Rabbit IgG in stabilizing components, phosphate buffered saline, pH 7.4, 150mM NaCl, 0.02% sodium azide and 50% glycerol. *This antibody is supplied in a stabilized formulation. Compatibility with conjugation reactions depends on the chemistry of the conjugation method used. For conjugation methods that are not compatible with the stabilizing components present in this formulation, a carrier-free antibody format is required.
Storage Instructions	Store at -20°C for one year. For short term storage and frequent use, store at 4°C for up to one month. Avoid repeated freeze-thaw cycles.
Host	Rabbit
Uniprot ID	P01834

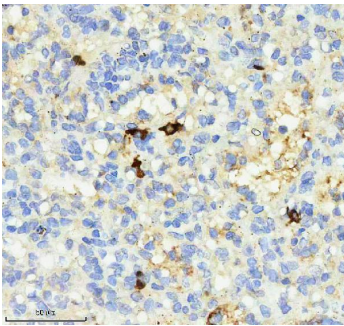
Technical Details

Immunogen	A synthesized peptide derived from human Kappa light chain
Isotype	Rabbit IgG
Form	Liquid
Concentration	0.5mg/ml
Purification	Affinity-chromatography
Suggested Dilutions	WB 1:500-2000 IHC 1:50-200 ICC/IF 1:50-200 IP 1:20

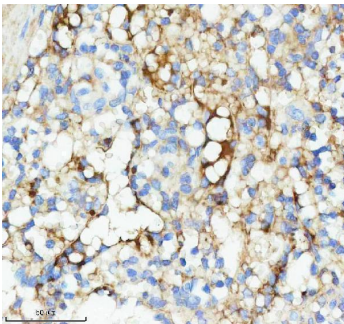
Anti-Kappa light chain IGKC Rabbit Monoclonal Antibody (M05470-1) Images



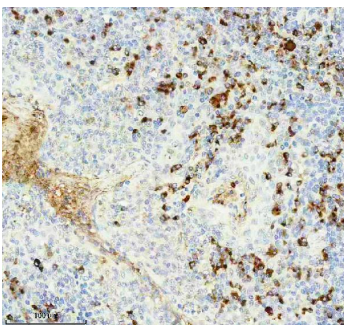
Western blot analysis of Kappa light chain expression in human plasma lysate.



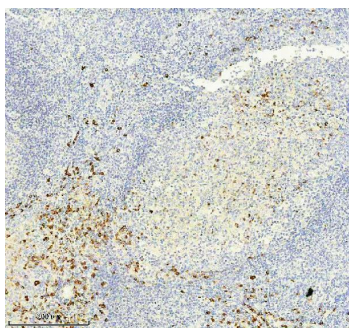
IHC analysis of ig Kappa light chain using anti-ig Kappa light chain antibody (M05470-1). ig Kappa light chain was detected in a paraffin-embedded section of human spleen tissue. Heat mediated antigen retrieval was performed in EDTA buffer (pH 8.0, epitope retrieval solution). The tissue section was blocked with 10% goat serum. The tissue section was then incubated with 1:50 rabbit anti-ig Kappa light chain Antibody (M05470-1) overnight at 4°C. Peroxidase Conjugated Goat Anti-rabbit IgG was used as secondary antibody and incubated for 30 minutes at 37°C. The tissue section was developed using HRP Conjugated Rabbit IgG Super Vision Assay Kit (Catalog # SV0002) with DAB as the chromogen.



IHC analysis of ig Kappa light chain using anti-ig Kappa light chain antibody (M05470-1). ig Kappa light chain was detected in a paraffin-embedded section of human spleen tissue. Heat mediated antigen retrieval was performed in EDTA buffer (pH 8.0, epitope retrieval solution). The tissue section was blocked with 10% goat serum. The tissue section was then incubated with 1:50 rabbit anti-ig Kappa light chain Antibody (M05470-1) overnight at 4°C. Peroxidase Conjugated Goat Anti-rabbit IgG was used as secondary antibody and incubated for 30 minutes at 37°C. The tissue section was developed using HRP Conjugated Rabbit IgG Super Vision Assay Kit (Catalog # SV0002) with DAB as the chromogen.



IHC analysis of ig Kappa light chain using anti-ig Kappa light chain antibody (M05470-1). ig Kappa light chain was detected in a paraffin-embedded section of human tonsil tissue. Heat mediated antigen retrieval was performed in EDTA buffer (pH 8.0, epitope retrieval solution). The tissue section was blocked with 10% goat serum. The tissue section was then incubated with 1:50 rabbit anti-ig Kappa light chain Antibody (M05470-1) overnight at 4°C. Peroxidase Conjugated Goat Anti-rabbit IgG was used as secondary antibody and incubated for 30 minutes at 37°C. The tissue section was developed using HRP Conjugated Rabbit IgG Super Vision Assay Kit (Catalog # SV0002) with DAB as the chromogen.



IHC analysis of ig Kappa light chain using anti-ig Kappa light chain antibody (M05470-1). ig Kappa light chain was detected in a paraffin-embedded section of human tonsil tissue. Heat mediated antigen retrieval was performed in EDTA buffer (pH 8.0, epitope retrieval solution). The tissue section was blocked with 10% goat serum. The tissue section was then incubated with 1:50 rabbit anti-ig Kappa light chain Antibody (M05470-1) overnight at 4°C. Peroxidase Conjugated Goat Anti-rabbit IgG was used as secondary antibody and incubated for 30 minutes at 37°C. The tissue section was developed using HRP Conjugated Rabbit IgG Super Vision Assay Kit (Catalog # SV0002) with DAB as the chromogen.

Submit a product review to Biocompare.com

Submit a review of this product to Biocompare.com to receive a \$20 Amazon.com giftcard! Your reviews help your fellow scientists make the right decisions. Thank you for your contribution.



Anti-Kappa light chain IGKC Rabbit Monoclonal Antibody

For Research Use Only. Not for use in diagnostic procedures.