

Anti-Mouse Ig Kappa Light Chain Igkc Rabbit Monoclonal Antibody, Clone#RM103

Catalog Number: M05470-2

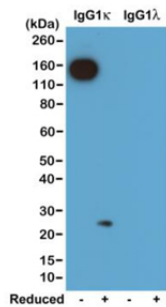
Overview

Product Name	Anti-Mouse Ig Kappa Light Chain Igkc Rabbit Monoclonal Antibody, Clone#RM103
Reactive Species	Mouse
Description	Boster Bio Anti-Mouse Ig Kappa Light Chain Igkc Rabbit Monoclonal Antibody, Clone#RM103 (Catalog # M05470-2). Tested in ELISA, WB applications. This antibody reacts with Mouse.
Application	ELISA, WB
Clonality	Monoclonal RM103
Formulation	50% Glycerol/PBS with 1% stabilizing protein and 0.09% sodium azide This antibody is supplied in a stabilized formulation. Compatibility with conjugation reactions depends on the chemistry of the conjugation method used. For conjugation methods that are not compatible with the stabilizing components present in this formulation, a carrier-free antibody format is required.
Storage Instructions	Store at -20°C for one year. Avoid repeated freeze-thaw cycles.
Host	Rabbit
Uniprot ID	P01837

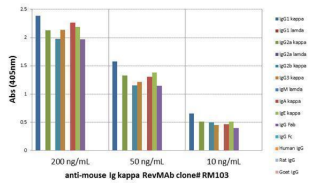
Technical Details

Immunogen	Mouse IgG
Cross Reactivity	This antibody reacts to the kappa light chain of mouse immunoglobulins. No cross-reactivity with the lamda light chain, human IgG, rat IgG, or goat IgG.
Isotype	Rabbit IgG
Form	Liquid
Concentration	1 mg/mL
Purification	Protein A affinity purified from an animal origin-free culture supernatant
Suggested Dilutions	ELISA: 0.005ug/mL-0.2ug/mL WB: 0.1ug/mL-0.5ug/mL.

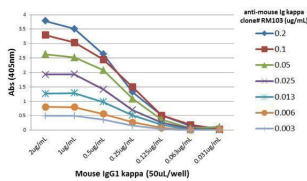
Anti-Mouse Ig Kappa Light Chain Igkc Rabbit Monoclonal Antibody, Clone#RM103 (M05470-2) Images



Western Blotting result Western blot of nonreduced(-) and reduced(+) mouse IgG1 and IgG1 (20ng/lane), using 0.2ug/mL of clone RM103. This antibody reacted to nonreduced IgG1 kappa (~150 kDa), and slightly react to reduced kappa light chain (~25 kDa)



ELISA result showing specificity ELISA of mouse immunoglobulins shows RM103 reacted to the kappa light chain of mouse immunoglobulins. No cross reactivity with the lamda light chain, human IgG, rat IgG, or goat IgG. The plate was coated with 50 ng/well of different immunoglobulins. 200 ng/mL, 50 ng/mL, or 10 ng/mL of RM103 was used as the primary antibody. An alkaline phosphatase conjugated anti-rabbit IgG as the secondary antibody.



ELISA result showing specificity A titer ELISA of mouse IgG1 Kappa. The plate was coated with different amounts of mouse IgG1 Kappa. A serial dilution of RM103 was used as the primary antibody. An alkaline phosphatase conjugated anti-rabbit IgG as the secondary antibody.

Submit a product review to Biocompare.com

Submit a review of this product to Biocompare.com to receive a \$20 Amazon.com giftcard! Your reviews help your fellow scientists make the right decisions. Thank you for your contribution.



Anti-Mouse Ig Kappa Light Chain Igkc Rabbit Monoclonal Antibody, Clone#RM103

For Research Use Only. Not for use in diagnostic procedures.