

Anti-Human Kappa Light Chain IGKC Rabbit Monoclonal Antibody, Clone#RM126

Catalog Number: M05470-3

Overview

Product Name	Anti-Human Kappa Light Chain IGKC Rabbit Monoclonal Antibody, Clone#RM126
Reactive Species	Human
Description	Boster Bio Anti-Human Kappa Light Chain IGKC Rabbit Monoclonal Antibody, Clone#RM126 (Catalog # M05470-3). Tested in ELISA, ICC, IHC, Flow Cytometry applications. This antibody reacts with Human.
Application	ELISA, Flow Cytometry, IHC, ICC
Clonality	Monoclonal RM126
Formulation	50% Glycerol/PBS with 1% BSA and 0.09% sodium azide
Storage Instructions	Store at -20°C for one year. Avoid repeated freeze-thaw cycles.
Host	Rabbit
Uniprot ID	P01834

Technical Details

Immunogen	Human IgG
Cross Reactivity	This antibody reacts to the kappa light chain of human immunoglobulins, and does not react to the lambda light chain. RM126 does not react to monkey (Cyno or Rhesus) IgG, mouse IgG, rat IgG, or goat IgG.
Isotype	Rabbit IgG
Form	Liquid
Concentration	1 mg/mL
Purification	Protein A affinity purified from an animal origin-free culture supernatant
Suggested Dilutions	<p>Dilute the sample so that the expected range of concentrations fall within the detection range of this kit.</p> <p>If the expected range of concentration is unknown, a pilot test should be conducted to decide the optimal dilution ratio for your samples.</p> <p>Some PubMed article(s) citing the expression level of this target are as follows:</p> <p>Boster Bio's internal QC testing used:</p> <p>ELISA: 0.05ug/mL – 0.2ug/mL</p> <p>Immunocytochemistry (ICC): 0.5ug/mL-2ug/mL</p> <p>Immunohistochemistry (IHC): 0.5ug/mL-2ug/mL</p>

Flow Cytometry (FC): 0.5ug/mL-2ug/mL.

Anti-Human Kappa Light Chain IGKC Rabbit Monoclonal Antibody, Clone#RM126 (M05470-3) Images

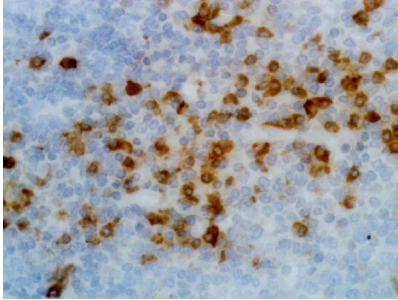


Figure 1. IHC result
Immunohistochemical staining of formalin fixed and paraffin embedded human tonsil tissue section using anti-human Ig kappa light chain rabbit monoclonal antibody (Clone RM126).

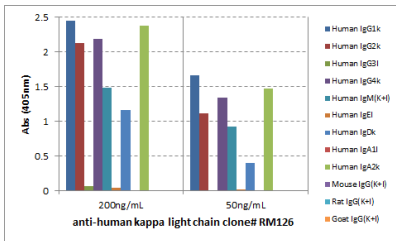


Figure 2. ELISA result showing specificity
ELISA showing RM126 reacts only to the kappa light chain of human immunoglobulins, and not to lambda light chain, mouse IgG, rat IgG, or goat IgG

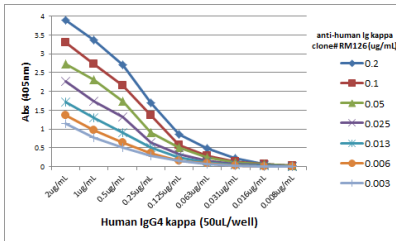


Figure 3. ELISA result showing specificity
A titer ELISA using RM126. The plate was coated with different amounts of human IgG4. A serial dilution of RM126 was used as the primary antibody. An alkaline phosphatase conjugated anti-rabbit IgG as the secondary antibody.

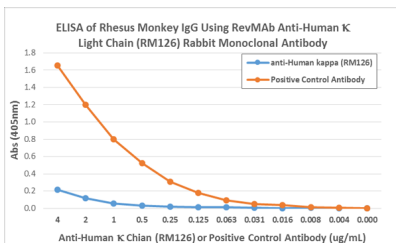


Figure 4. ELISA result showing specificity
ELISA showing RM126 does not react to monkey IgG. The plate was coated with Rhesus monkey IgG. A serial dilution of RM126 and a monkey IgG binding antibody (positive control) was used as the detection antibody.

Submit a product review to Biocompare.com

Submit a review of this product to Biocompare.com to receive a \$20 Amazon.com giftcard! Your reviews help your fellow scientists make the right decisions. Thank you for your contribution.



Anti-Human Kappa Light Chain IGKC Rabbit Monoclonal Antibody, Clone#RM126