

Anti-Human Ig Light Chains IGKC Rabbit Monoclonal Antibody, Clone#RM129

Catalog Number: M05470-4

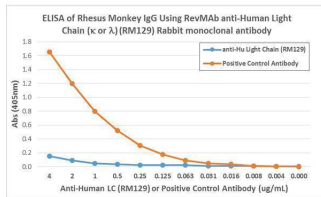
Overview

Product Name	Anti-Human Ig Light Chains IGKC Rabbit Monoclonal Antibody, Clone#RM129
Reactive Species	Human
Description	Boster Bio Anti-Human Ig Light Chains IGKC Rabbit Monoclonal Antibody, Clone#RM129 (Catalog # M05470-4). Tested in ELISA, ICC, IHC, Flow Cytometry applications. This antibody reacts with Human.
Application	ELISA, Flow Cytometry, IHC, ICC
Clonality	Monoclonal RM129
Formulation	50% Glycerol/PBS with 1% stabilizing protein and 0.09% sodium azide This antibody is supplied in a stabilized formulation. Compatibility with conjugation reactions depends on the chemistry of the conjugation method used. For conjugation methods that are not compatible with the stabilizing components present in this formulation, a carrier-free antibody format is required.
Storage Instructions	Store at -20°C for one year. Avoid repeated freeze-thaw cycles.
Host	Rabbit
Uniprot ID	P01834

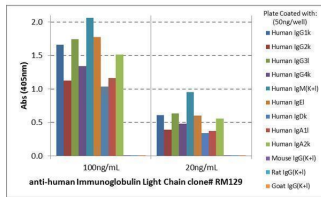
Technical Details

Immunogen	Human IgG
Cross Reactivity	This antibody reacts to both kappa and lambda light chains of human immunoglobulins. The antibody does not react to monkey (Cyno or Rhesus) IgG, mouse IgG, rat IgG, or goat IgG.
Isotype	Rabbit IgG
Form	Liquid
Concentration	1 mg/mL
Purification	Protein A affinity purified from an animal origin-free culture supernatant
Suggested Dilutions	ELISA: 0.1 ug/mL - 0.5 ug/mL Immunocytochemistry (ICC): 0.5ug/mL-2ug/mL Immunohistochemistry (IHC): 0.5ug/mL-2ug/mL Flow Cytometry (FC): 0.5ug/mL-2ug/mL.

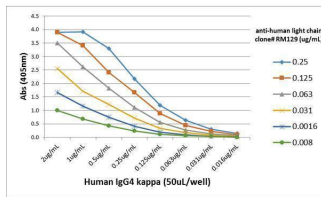
Anti-Human Ig Light Chains IGKC Rabbit Monoclonal Antibody, Clone#RM129 (M05470-4) Images



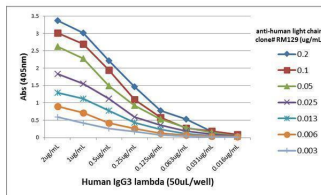
ELISA result showing specificity ELISA shows that clone RM129 does not react to monkey IgG. The plate was coated with Rhesus monkey IgG. A serial dilution of RM129 and a monkey IgG reacting antibody (positive control) was used as the detection antibodies.



ELISA result showing specificity ELISA shows that clone RM129 reacts only to the kappa and lambda light chains in all human immunoglobulins, and does not react to mouse IgG, rat IgG, or goat IgG.



ELISA result showing specificity A titer ELISA using RM129. The plate was coated with different amounts of human IgG4. A serial dilution of RM129 was used as the primary antibody, followed by an alkaline phosphatase conjugated anti-rabbit IgG as the secondary antibody.



ELISA result showing specificity A titer ELISA using RM129. The plate was coated with different amounts of human IgG3. A serial dilution of RM129 was used as the primary antibody, followed by an alkaline phosphatase conjugated anti-rabbit IgG as the secondary antibody.

Submit a product review to [Biocompare.com](https://www.biocompare.com)

Submit a review of this product to [Biocompare.com](https://www.biocompare.com) to receive a \$20 Amazon.com giftcard! Your reviews help your fellow scientists make the right decisions. Thank you for your contribution.



Anti-Human Ig Light Chains IGKC Rabbit Monoclonal Antibody, Clone#RM129

For Research Use Only. Not for use in diagnostic procedures.