

Anti-PSMC5 Rabbit Monoclonal Antibody

Catalog Number: M05480-1

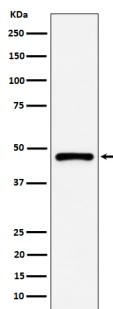
Overview

| | |
|----------------------|--|
| Product Name | Anti-PSMC5 Rabbit Monoclonal Antibody |
| Reactive Species | Human, Mouse, Rat |
| Description | Boster Bio Anti-PSMC5 Rabbit Monoclonal Antibody catalog # M05480-1. Tested in WB, IHC, ICC/IF, IP, Flow Cytometry applications. This antibody reacts with Human, Mouse, Rat. |
| Application | Flow Cytometry, IP, IF, IHC, ICC, WB |
| Clonality | Monoclonal 29P84 |
| Formulation | Rabbit IgG in stabilizing components, phosphate buffered saline, pH 7.4, 150mM NaCl, 0.02% sodium azide and 50% glycerol. *This antibody is supplied in a stabilized formulation. Compatibility with conjugation reactions depends on the chemistry of the conjugation method used. For conjugation methods that are not compatible with the stabilizing components present in this formulation, a carrier-free antibody format is required. |
| Storage Instructions | Store at -20°C for one year. For short term storage and frequent use, store at 4°C for up to one month. Avoid repeated freeze-thaw cycles. |
| Host | Rabbit |
| Uniprot ID | P62195 |

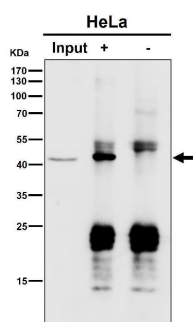
Technical Details

| | |
|---------------------|--|
| Immunogen | A synthesized peptide derived from human PSMC5 |
| Isotype | IgG |
| Form | Liquid |
| Concentration | 0.5mg/ml |
| Purification | Affinity-chromatography |
| Suggested Dilutions | WB 1:500-2000 IHC 1:50-200 ICC/IF 1:50-200 IP 1:50 FC 1:50 |

Anti-PSMC5 Rabbit Monoclonal Antibody (M05480-1) Images



Western blot analysis of PSMC5 expression in A431 cell lysate.



Immunoprecipitate (IP) analysis using the Antibody at 1:50 dilution. (wb at 1:1K dilution)

Submit a product review to [Biocompare.com](https://www.biocompare.com)

Submit a review of this product to [Biocompare.com](https://www.biocompare.com) to receive a \$20 Amazon.com giftcard! Your reviews help your fellow scientists make the right decisions. Thank you for your contribution.



Anti-PSMC5 Rabbit Monoclonal Antibody

For Research Use Only. Not for use in diagnostic procedures.