

Anti-Metallothionein Antibody

Catalog Number: M05542

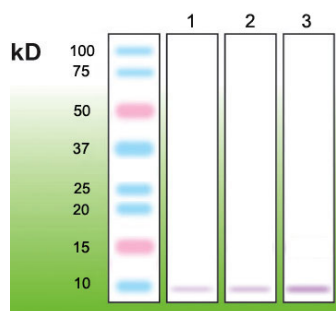
Overview

Product Name	Anti-Metallothionein Antibody
Reactive Species	Human, Rabbit
Description	Anti-Metallothionein Antibody
Conjugate	Unconjugated
Application	ELISA, WB
Clonality	Monoclonal N11-G
Formulation	Buffer: 20 mM Tris-HCl, pH 8.0. Stanilizer: 10 mg/ml BSA
Storage Instructions	Storage: - 20 °C. Shipping Condition: +2 oC to +8 °C
Host	Rabbit

Technical Details

Immunogen	Peptide corresponding to the N-terminal sequence of human metallothionein (covering isoforms 1A, B, E, F, G, H, I, L, M, Q, S, Y, 2A)
Isotype	Rabbit IgG
Purification	In vitro cloning
Suggested Dilutions	<p>Dilute the sample so that the expected range of concentrations fall within the detection range of this kit.</p> <p>If the expected range of concentration is unknown, a pilot test should be conducted to decide the optimal dilution ratio for your samples.</p> <p>Some PubMed article(s) citing the expression level of this target are as follows:</p> <p>Boster Bio's internal QC testing used:</p> <p>Western blotting – 1:1,000</p> <p>ELISA – 1:5,000-1:10,000</p>

Anti-Metallothionein Antibody (M05542) Images



Western blot of metallothionein from rabbit liver. Lane 1 - 1 ug; Lane 2 - 3 ug; Lane 3 - 5 ug of protein loaded.

Submit a product review to Biocompare.com

Submit a review of this product to Biocompare.com to receive a \$20 Amazon.com giftcard! Your reviews help your fellow scientists make the right decisions. Thank you for your contribution.



Anti-Metallothionein Antibody