

Anti-ACTL6A Monoclonal Antibody

Catalog Number: M05553

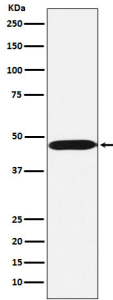
Overview

Product Name	Anti-ACTL6A Monoclonal Antibody
Reactive Species	Human, Mouse, Rat
Description	Boster Bio Anti-ACTL6A Monoclonal Antibody catalog # M05553. Tested in WB, IHC, ICC/IF, IP applications. This antibody reacts with Human, Mouse, Rat.
Application	IP, IF, IHC, ICC, WB
Clonality	Monoclonal AFCF-1
Formulation	Rabbit IgG in stabilizing components, phosphate buffered saline, pH 7.4, 150mM NaCl, 0.02% sodium azide and 50% glycerol. *This antibody is supplied in a stabilized formulation. Compatibility with conjugation reactions depends on the chemistry of the conjugation method used. For conjugation methods that are not compatible with the stabilizing components present in this formulation, a carrier-free antibody format is required.
Storage Instructions	Store at -20°C for one year. For short term storage and frequent use, store at 4°C for up to one month. Avoid repeated freeze-thaw cycles.
Host	Rabbit
Uniprot ID	O96019

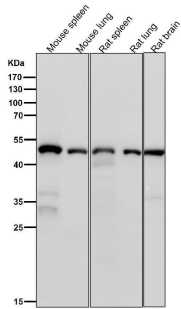
Technical Details

Immunogen	A synthesized peptide derived from human ACTL6A Involved in transcriptional activation and repression of select genes by chromatin remodeling (alteration of DNA-nucleosome topology) . Required for maximal ATPase activity of SMARCA4/BRG1/BAF190A and for association of the SMARCA4/BRG1/BAF190A containing remodeling complex BAF with chromatin/nuclear matrix.
Isotype	Rabbit IgG
Form	Liquid
Concentration	0.5mg/ml
Purification	Affinity-chromatography
Suggested Dilutions	WB 1:500-2000 IHC 1:50-200 ICC/IF 1:50-200 IP 1:50

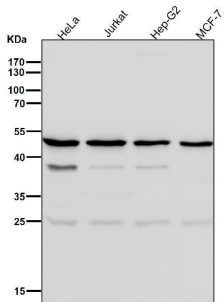
Anti-ACTL6A Monoclonal Antibody (M05553) Images



Western blot analysis of ACTL6A expression in Ramos cell lysate.



All lanes use the Antibody at 1:1W dilution for 1 hour at room temperature.



All lanes use the Antibody at 1:1W dilution for 1 hour at room temperature.

Submit a product review to [Biocompare.com](https://www.biocompare.com)

Submit a review of this product to [Biocompare.com](https://www.biocompare.com) to receive a \$20 Amazon.com giftcard! Your reviews help your fellow scientists make the right decisions. Thank you for your contribution.



Anti-ACTL6A Monoclonal Antibody

For Research Use Only. Not for use in diagnostic procedures.