

Anti-KIF22 Antibody (Center)

Catalog Number: M05570

About KIF22

Kinesin family that is involved in spindle formation and the movements of chromosomes during mitosis and meiosis. Binds to microtubules and to DNA.

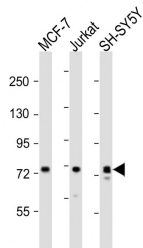
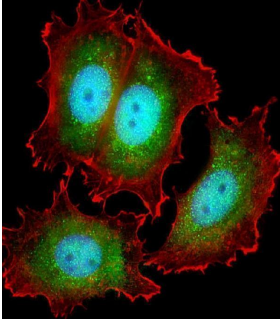
Overview

Product Name	Anti-KIF22 Antibody (Center)
Reactive Species	Human
Description	Boster Bio Anti-KIF22 Antibody (Center) (Catalog # M05570). Tested in WB, IHC-P, IF application(s). This antibody reacts with Human.
Application	IF, IHC-P, WB
Clonality	Polyclonal
Formulation	Purified polyclonal antibody supplied in PBS with 0.09% (W/V) sodium azide.
Storage Instructions	Maintain refrigerated at 2-8°C for up to 2 weeks. For long-term storage, store at -20°C in small aliquots to prevent freeze-thaw cycles.
Host	Rabbit
Uniprot ID	Q14807

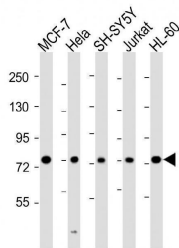
Technical Details

Immunogen	This KIF22 antibody is generated from a rabbit immunized with a KLH conjugated synthetic peptide between 423-456 amino acids from the Central region of human KIF22.
Predicted Reactive Species	Mouse
Isotype	Rabbit IgG
Purification	This antibody is purified through a protein A column, followed by peptide affinity purification.
Suggested Dilutions	IF: 1:25 WB: 1:2000 IHC-P: 1:25

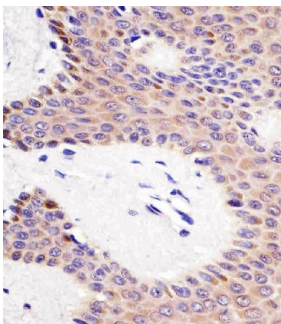
Anti-KIF22 Antibody (Center) (M05570) Images



All lanes : Anti-KIF22 Antibody (Center) at 1:2000 dilution
Lane 1: MCF-7 whole cell lysates
Lane 2: Jurkat whole cell lysates
Lane 3: SH-SY5Y whole cell lysates
Lysates/proteins at 20 µg per lane. Secondary Goat Anti-Rabbit IgG, (H+L), Peroxidase conjugated at 1/10000 dilution
Predicted band size : 73 kDa
Blocking/Dilution buffer: 5% NFDN/TBST.

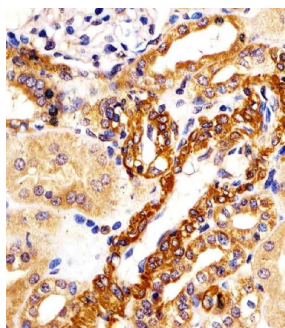


All lanes : Anti-KIF22 Antibody (Center) at 1:2000 dilution
Lane 1: MCF-7 whole cell lysates
Lane 2: HeLa whole cell lysates
Lane 3: SH-SY5Y whole cell lysates
Lane 4: Jurkat whole cell lysates
Lane 5: HL-60 whole cell lysates
Lysates/proteins at 20 µg per lane. Secondary Goat Anti-Rabbit IgG, (H+L), Peroxidase conjugated at 1/10000 dilution
Predicted band size : 73 kDa
Blocking/Dilution buffer: 5% NFDN/TBST.



M05570 staining KIF22 in human skin tissue sections by Immunohistochemistry (IHC-P -paraformaldehyde-fixed, paraffin-embedded sections). Tissue was fixed with formaldehyde and blocked with 3% BSA for 0.5 hour at room temperature; antigen retrieval was by heat mediation with a citrate buffer (pH6). Samples were incubated with primary antibody (1/25) for 1 hours at 37°C. A undiluted biotinylated goat polyvalent antibody was used as the secondary antibody.

M05570 staining KIF22 in human kidney tissue sections by Immunohistochemistry (IHC-P -paraformaldehyde-fixed, paraffin-embedded sections). Tissue was fixed with formaldehyde and blocked with 3% BSA for 0.5 hour at room temperature; antigen retrieval was by heat mediation with a citrate buffer (pH6). Samples were incubated with primary antibody (1/25) for 1 hours at 37°C. A undiluted biotinylated goat polyvalent antibody was used as the secondary antibody.



biotinylated goat polyvalent antibody was used as the secondary antibody.

Submit a product review to [Biocompare.com](https://www.biocompare.com)

Submit a review of this product to [Biocompare.com](https://www.biocompare.com) to receive a \$20 Amazon.com giftcard! Your reviews help your fellow scientists make the right decisions. Thank you for your contribution.



Anti-KIF22 Antibody (Center)

For Research Use Only. Not for use in diagnostic procedures.