

Anti-Collagen XV (COL15A1) Mouse Monoclonal Antibody [Clone ID: OT11C5]

Catalog Number: M05581

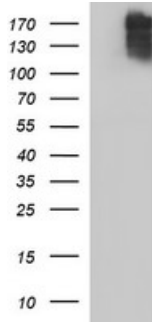
Overview

Product Name	Anti-Collagen XV (COL15A1) Mouse Monoclonal Antibody [Clone ID: OT11C5]
Reactive Species	Human
Description	Boster Bio COL15A1 mouse monoclonal antibody, clone OT11C5 (formerly 1C5). Catalog# M05581. Tested in IF, WB. This antibody reacts with Human.
Application	IF, WB
Clonality	Monoclonal OT11C5
Formulation	PBS (pH 7.3) containing 1% stabilizing protein, 50% glycerol and 0.02% sodium azide. This antibody is supplied in a stabilized formulation. Compatibility with conjugation reactions depends on the chemistry of the conjugation method used. For conjugation methods that are not compatible with the stabilizing components present in this formulation, a carrier-free antibody format is required.
Storage Instructions	Store at -20°C as received.
Host	Mouse
Uniprot ID	P39059

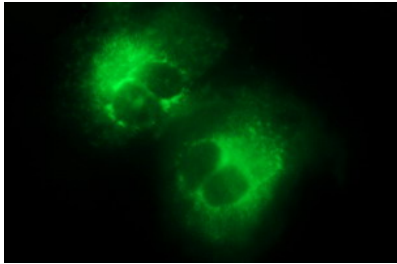
Technical Details

Immunogen	Full length human recombinant protein of human COL15A1 (NP_001846) produced in HEK293T cell.
Isotype	IgG1
Concentration	1 mg/ml
Purification	Purified from mouse ascites fluids or tissue culture supernatant by affinity chromatography (protein A/G)
Suggested Dilutions	WB 1:4000

Anti-Collagen XV (COL15A1) Mouse Monoclonal Antibody [Clone ID: OT11C5] (M05581) Images



HEK293T cells were transfected with the pCMV6-ENTRY control (Left lane) or pCMV6-ENTRY COL15A1 (Right lane) cDNA for 48 hrs and lysed. Equivalent amounts of cell lysates (5 ug per lane) were separated by SDS-PAGE and immunoblotted with anti-COL15A1.



Anti-COL15A1 mouse monoclonal antibody (M05581) immunofluorescent staining of COS7 cells transiently transfected by pCMV6-ENTRY COL15A1.

Submit a product review to [Biocompare.com](https://www.biocompare.com)

Submit a review of this product to [Biocompare.com](https://www.biocompare.com) to receive a \$20 Amazon.com giftcard! Your reviews help your fellow scientists make the right decisions. Thank you for your contribution.



Anti-Collagen XV (COL15A1) Mouse Monoclonal Antibody [Clone ID: OT11C5]

For Research Use Only. Not for use in diagnostic procedures.