

Anti-beta Tubulin Mouse Monoclonal Antibody

Catalog Number: M05613-5

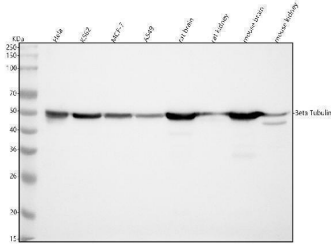
Overview

Product Name	Anti-beta Tubulin Mouse Monoclonal Antibody
Reactive Species	Chicken, Hamster, Human, Mouse, Rat
Description	Boster Bio Anti-beta Tubulin Mouse Monoclonal Antibody catalog # M05613-5. Tested in WB, IHC, ICC/IF applications. This antibody reacts with Human, Mouse, Rat, Chicken, Hamster.
Application	IF, IHC, ICC, WB
Clonality	Monoclonal 17T13
Formulation	Mouse IgG in stabilizing components, phosphate buffered saline, pH 7.4, 150mM NaCl, 0.02% sodium azide and 50% glycerol. *This antibody is supplied in a stabilized formulation. Compatibility with conjugation reactions depends on the chemistry of the conjugation method used. For conjugation methods that are not compatible with the stabilizing components present in this formulation, a carrier-free antibody format is required.
Storage Instructions	Store at -20°C for one year. For short term storage and frequent use, store at 4°C for up to one month. Avoid repeated freeze-thaw cycles.
Host	Mouse
Uniprot ID	P07437

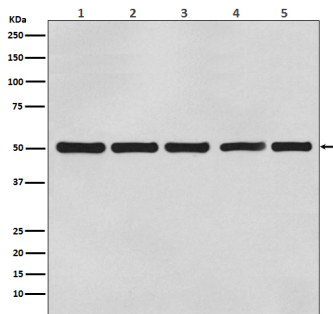
Technical Details

Immunogen	A synthesized peptide derived from human beta Tubulin
Isotype	IgG1
Form	Liquid
Concentration	0.5mg/ml
Purification	Affinity-chromatography
Suggested Dilutions	WB 1:3000-10000 IHC 1:50-200 ICC/IF 1:50-200

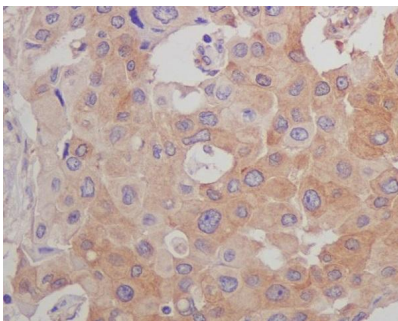
Anti-beta Tubulin Mouse Monoclonal Antibody (M05613-5) Images



Western blot analysis of beta Tubulin using anti-beta Tubulin antibody (M05613-5). Electrophoresis was performed on a 5-20% SDS-PAGE gel at 70V (Stacking gel) / 90V (Resolving gel) for 2-3 hours. The sample well of each lane was loaded with 30 ug of sample under reducing conditions. Lane 1: human Hela whole cell lysates, Lane 2: human K562 whole cell lysates, Lane 3: human MCF-7 whole cell lysates, Lane 4: human A549 whole cell lysates, Lane 5: rat brain tissue lysates, Lane 6: rat kidney tissue lysates, Lane 7: mouse brain tissue lysates, Lane 8: mouse kidney tissue lysates. After electrophoresis, proteins were transferred to a nitrocellulose membrane at 150 mA for 50-90 minutes. Blocked the membrane with 5% non-fat milk/TBS for 1.5 hour at RT. The membrane was incubated with mouse anti-beta Tubulin antigen affinity purified monoclonal antibody (Catalog # M05613-5) at 1:3000 overnight at 4°C, then washed with TBS-0.1%Tween 3 times with 5 minutes each and probed with a goat anti-mouse IgG-HRP secondary antibody at a dilution of 1:500 for 1.5 hour at RT. The signal is developed using an Enhanced Chemiluminescent detection (ECL) kit (Catalog # EK1002) with Tanon 5200 system. A specific band was detected for beta Tubulin at approximately 50 kDa. The expected band size for beta Tubulin is at 50 kDa.

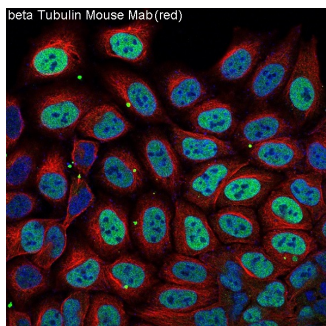


Western blot analysis of beta Actin expression in (1) A431 cell lysate; (2) Rat brain lysate; (3) Mouse kidney lysate; (4) Chicken lung lysate; (5) Hamster spleen lysate with beta Tubulin Mouse Monoclonal Antibody.



Immunohistochemical analysis of paraffin-embedded human breast carcinoma, using beta Tubulin Mouse Monoclonal Antibody.

Immunofluorescent analysis of Hela cells, using beta Tubulin mAb.



Submit a product review to [Biocompare.com](https://www.biocompare.com)

Submit a review of this product to [Biocompare.com](https://www.biocompare.com) to receive a \$20 Amazon.com giftcard! Your reviews help your fellow scientists make the right decisions. Thank you for your contribution.



Anti-beta Tubulin Mouse Monoclonal Antibody

For Research Use Only. Not for use in diagnostic procedures.