

Anti-beta Tubulin Rabbit Monoclonal Antibody

Catalog Number: M05613-6

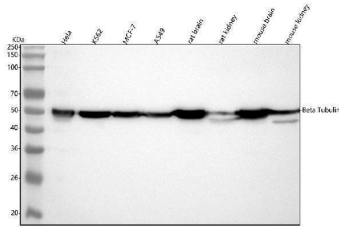
Overview

Product Name	Anti-beta Tubulin Rabbit Monoclonal Antibody
Reactive Species	Human, Mouse, Rat
Description	Boster Bio Anti-beta Tubulin Rabbit Monoclonal Antibody catalog # M05613-6. Tested in WB, IHC, ICC/IF, Flow Cytometry applications. This antibody reacts with Human, Mouse, Rat.
Application	Flow Cytometry, IF, IHC, ICC, WB
Clonality	Monoclonal 17T15
Formulation	Rabbit IgG in stabilizing components, phosphate buffered saline, pH 7.4, 150mM NaCl, 0.02% sodium azide and 50% glycerol. *This antibody is supplied in a stabilized formulation. Compatibility with conjugation reactions depends on the chemistry of the conjugation method used. For conjugation methods that are not compatible with the stabilizing components present in this formulation, a carrier-free antibody format is required.
Storage Instructions	Store at -20°C for one year. For short term storage and frequent use, store at 4°C for up to one month. Avoid repeated freeze-thaw cycles.
Host	Rabbit
Uniprot ID	P07437

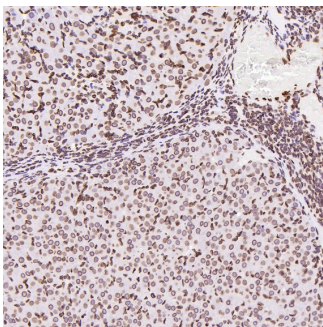
Technical Details

Immunogen	A synthesized peptide derived from human beta Tubulin
Isotype	IgG
Form	Liquid
Concentration	0.5mg/ml
Purification	Affinity-chromatography
Suggested Dilutions	WB 1:1000-2000 IHC 1:50-200 ICC/IF 1:50-200 FC 1:50

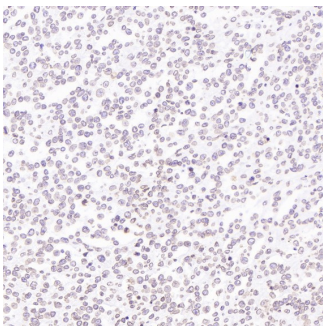
Anti-beta Tubulin Rabbit Monoclonal Antibody (M05613-6) Images



Western blot analysis of beta Tubulin using anti-beta Tubulin antibody (M05613-6). Electrophoresis was performed on a 5-20% SDS-PAGE gel at 70V (Stacking gel) / 90V (Resolving gel) for 2-3 hours. The sample well of each lane was loaded with 30 ug of sample under reducing conditions. Lane 1: human Hela whole cell lysates, Lane 2: human K562 whole cell lysates, Lane 3: human MCF-7 whole cell lysates, Lane 4: human A549 whole cell lysates, Lane 5: rat brain tissue lysates, Lane 6: rat kidney tissue lysates, Lane 7: mouse brain tissue lysates, Lane 8: mouse kidney tissue lysates. After electrophoresis, proteins were transferred to a nitrocellulose membrane at 150 mA for 50-90 minutes. Blocked the membrane with 5% non-fat milk/TBS for 1.5 hour at RT. The membrane was incubated with mouse anti-beta Tubulin antigen affinity purified monoclonal antibody (Catalog # M05613-6) at 1:3000 overnight at 4°C, then washed with TBS-0.1%Tween 3 times with 5 minutes each and probed with a goat anti-mouse IgG-HRP secondary antibody at a dilution of 1:500 for 1.5 hour at RT. The signal is developed using an Enhanced Chemiluminescent detection (ECL) kit (Catalog # EK1002) with Tanon 5200 system. A specific band was detected for beta Tubulin at approximately 50 kDa. The expected band size for beta Tubulin is at 50 kDa.

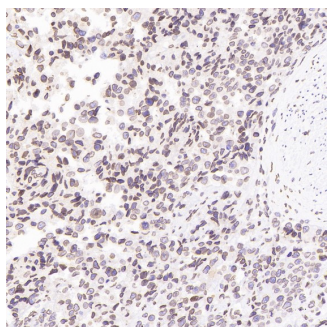
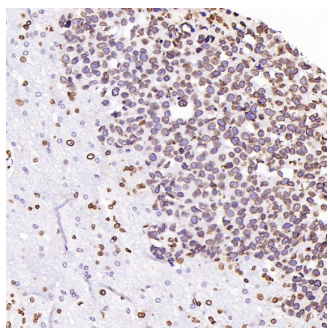


Immunohistochemical analysis of paraffin-embedded Rat stomach, using the Antibody at 1:250 dilution.

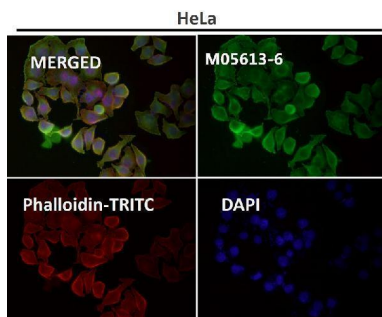


Immunohistochemical analysis of paraffin-embedded Human Hodgkin's Lymphoma, using the Antibody at 1:250 dilution.

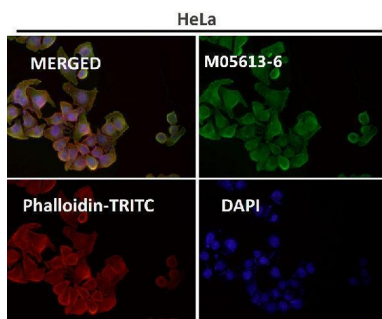
Immunohistochemical analysis of paraffin-embedded Human astrocytoma, using the Antibody at 1:250 dilution.



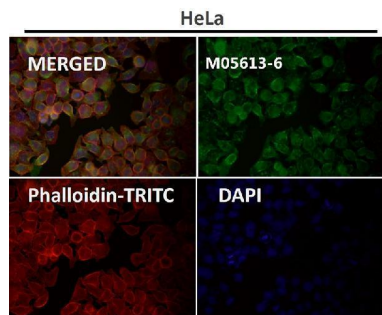
Immunohistochemical analysis of paraffin-embedded Mouse skeletal muscle - gastrocnemius , using the Antibody at 1:250 dilution.



Immunofluorescent analysis using the Antibody at 1:50 dilution.



Immunofluorescent analysis using the Antibody at 1:50 dilution.



Immunofluorescent analysis using the Antibody at 1:150 dilution.

3 Publications Citing This Product

1. PubMed ID: 10.3892/or.2017.5827, Carboxy-terminus Hsc70 interacting protein exerts a tumor inhibition function in head and neck cancer
2. PubMed ID: 10.1111/cns.12305, Histamine Upregulates Nav1.8 Expression in Primary Afferent Neurons via H2 Receptors: Involvement in Neuropathic Pain
3. PubMed ID: 10.1021/pr100080x, Proteomics Analysis of Differential Expression of Chicken Brain Tissue Proteins in Response to the Neurovirulent H5N1 Avian Influenza Virus Infection

Visit bosterbio.com/anti-beta-tubulin-rabbit-monoclonal-antibody-m05613-6-boster.html to see all 3 publications.

Submit a product review to Biocompare.com

Submit a review of this product to Biocompare.com to receive a \$20 Amazon.com giftcard! Your reviews help your fellow scientists make the right decisions. Thank you for your contribution.



Anti-beta Tubulin Rabbit Monoclonal Antibody

For Research Use Only. Not for use in diagnostic procedures.