

## Anti-Aminoacylase 1 (ACY1) Mouse Monoclonal Antibody [Clone ID: OTI2D3]

Catalog Number: M05650-2

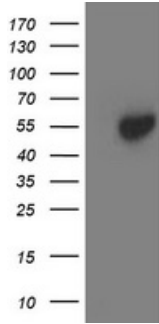
### Overview

Product Name	Anti-Aminoacylase 1 (ACY1) Mouse Monoclonal Antibody [Clone ID: OTI2D3]
Reactive Species	Dog, Human, Mouse, Rat
Description	Boster Bio ACY1 (Aminoacylase 1) mouse monoclonal antibody, clone OTI2D3 (formerly 2D3). Catalog# M05650-2. Tested in FC, IHC, WB. This antibody reacts with Human, Mouse, Rat, Dog.
Application	Flow Cytometry, IHC, WB
Clonality	Monoclonal OTI2D3
Formulation	PBS (pH 7.3) containing 1% stabilizing protein, 50% glycerol and 0.02% sodium azide. This antibody is supplied in a stabilized formulation. Compatibility with conjugation reactions depends on the chemistry of the conjugation method used. For conjugation methods that are not compatible with the stabilizing components present in this formulation, a carrier-free antibody format is required.
Storage Instructions	Store at -20°C as received.
Host	Mouse
Uniprot ID	Q03154

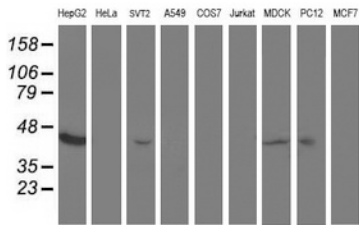
### Technical Details

Immunogen	Full length human recombinant protein of human ACY1 (NP_000657) produced in HEK293 cell.
Isotype	IgG1
Concentration	1 mg/ml
Purification	Purified from mouse ascites fluids or tissue culture supernatant by affinity chromatography (protein A/G)
Suggested Dilutions	WB 1:200~500 IHC 1:150 Flow Cytometry 1:100

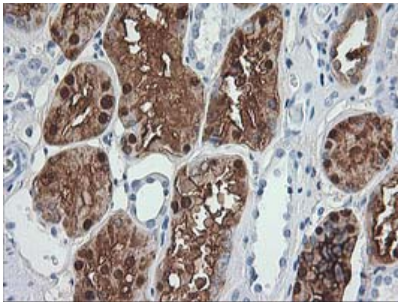
## Anti-Aminoacylase 1 (ACY1) Mouse Monoclonal Antibody [Clone ID: OTI2D3] (M05650-2) Images



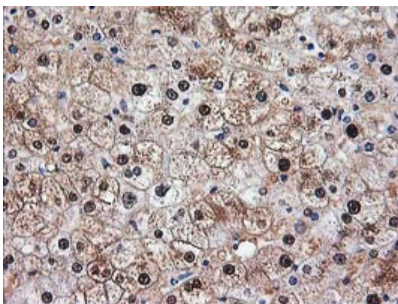
HEK293T cells were transfected with the pCMV6-ENTRY control (Left lane) or pCMV6-ENTRY ACY1 (Right lane) cDNA for 48 hrs and lysed. Equivalent amounts of cell lysates (5 ug per lane) were separated by SDS-PAGE and immunoblotted with anti-ACY1.



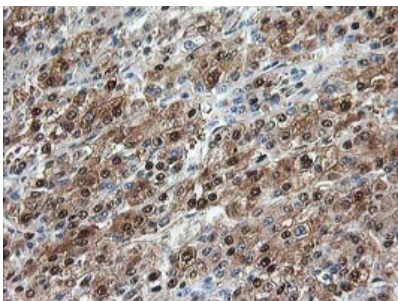
Western blot analysis of extracts (35ug) from 9 different cell lines by using anti-ACY1 monoclonal antibody.



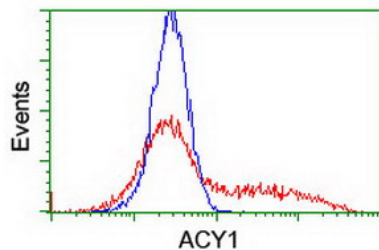
Immunohistochemical staining of paraffin-embedded Human Kidney tissue within the normal limits using anti-ACY1 mouse monoclonal antibody. (Heat-induced epitope retrieval by 10mM citric buffer)



Immunohistochemical staining of paraffin-embedded Human liver tissue within the normal limits using anti-ACY1 mouse monoclonal antibody. (Heat-induced epitope retrieval by 10mM citric buffer)



Immunohistochemical staining of paraffin-embedded Carcinoma of Human liver tissue using anti-ACY1 mouse monoclonal antibody. (Heat-induced epitope retrieval by 10mM citric buffer)



HEK293T cells transfected with either ACY1 (Myc-DDK-tagged) overexpress plasmid (Red) or empty vector control plasmid (Blue) were immunostained by anti-ACY1 antibody (M05650-2)

## Submit a product review to Biocompare.com

Submit a review of this product to Biocompare.com to receive a \$20 Amazon.com giftcard! Your reviews help your fellow scientists make the right decisions. Thank you for your contribution.



Anti-Aminoacylase 1 (ACY1) Mouse Monoclonal Antibody [Clone ID: OTI2D3]

For Research Use Only. Not for use in diagnostic procedures.