

Anti-FA2H Mouse Monoclonal Antibody [Clone ID: OTI2E3]

Catalog Number: M05657

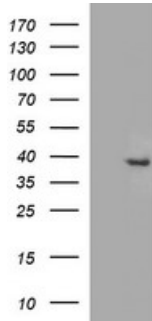
Overview

Product Name	Anti-FA2H Mouse Monoclonal Antibody [Clone ID: OTI2E3]
Reactive Species	Human
Description	Boster Bio FA2H mouse monoclonal antibody, clone OTI2E3 (formerly 2E3). Catalog# M05657. Tested in IF, WB. This antibody reacts with Human.
Application	IF, WB
Clonality	Monoclonal OTI2E3
Formulation	PBS (pH 7.3) containing 1% stabilizing protein, 50% glycerol and 0.02% sodium azide. This antibody is supplied in a stabilized formulation. Compatibility with conjugation reactions depends on the chemistry of the conjugation method used. For conjugation methods that are not compatible with the stabilizing components present in this formulation, a carrier-free antibody format is required.
Storage Instructions	Store at -20°C as received.
Host	Mouse
Uniprot ID	Q7L5A8

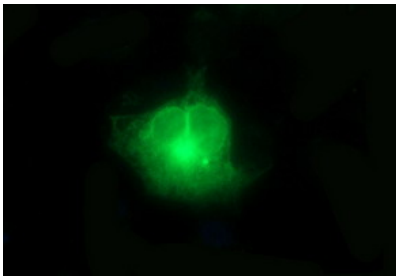
Technical Details

Immunogen	Full length human recombinant protein of human FA2H (NP_077282) produced in HEK293T cell.
Isotype	IgG1
Concentration	1 mg/ml
Purification	Purified from mouse ascites fluids or tissue culture supernatant by affinity chromatography (protein A/G)
Suggested Dilutions	WB: 1:1000 IF: 1:50-1:100

Anti-FA2H Mouse Monoclonal Antibody [Clone ID: OTI2E3] (M05657) Images



HEK293T cells were transfected with the pCMV6-ENTRY control (Left lane) or pCMV6-ENTRY FA2H (Right lane) cDNA for 48 hrs and lysed. Equivalent amounts of cell lysates (5 ug per lane) were separated by SDS-PAGE and immunoblotted with anti-FA2H.



Immunofluorescent staining of COS7 cells transiently transfected with pCMV6-ENTRY FA2H by using Anti-FA2H mouse monoclonal antibody (M05657) at 1:100 dilutions.

Submit a product review to Biocompare.com

Submit a review of this product to Biocompare.com to receive a \$20 Amazon.com giftcard! Your reviews help your fellow scientists make the right decisions. Thank you for your contribution.



Anti-FA2H Mouse Monoclonal Antibody [Clone ID: OTI2E3]

For Research Use Only. Not for use in diagnostic procedures.