

Anti-RAB21 Antibody

Catalog Number: M05683

About RAB21

Regulates integrin internalization and recycling, but does not influence the traffic of endosomally translocated receptors in general. As a result, may regulate cell adhesion and migration (By similarity). During the mitosis of adherent cells, controls the endosomal trafficking of integrins which is required for the successful completion of cytokinesis. Involved in neurite growth (By similarity).

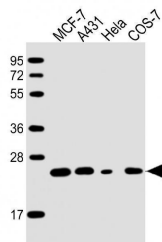
Overview

Product Name	Anti-RAB21 Antibody
Reactive Species	African green monkey, Human
Description	Boster Bio Anti-RAB21 Antibody (Catalog # M05683). Tested in WB application(s). This antibody reacts with Human, African green monkey.
Application	WB
Clonality	Monoclonal 1701CT536.68.39
Formulation	Purified monoclonal antibody supplied in PBS with 0.09% (W/V) sodium azide.
Storage Instructions	Maintain refrigerated at 2-8°C for up to 2 weeks. For long-term storage, store at -20°C in small aliquots to prevent freeze-thaw cycles.
Host	Mouse
Uniprot ID	Q9UL25

Technical Details

Immunogen	This RAB21 antibody is generated from a mouse immunized with a recombinant protein between 1-225 amino acids from the human RAB21.
Predicted Reactive Species	Rat
Isotype	IgG2b,kappa
Purification	This antibody is purified through a protein G column, followed by dialysis against PBS.
Suggested Dilutions	WB: 1:2000

Anti-RAB21 Antibody (M05683) Images



All lanes : Anti-RAB21 Antibody at 1:2000 dilution
Lane 1: MCF-7 whole cell lysate
Lane 2: A431 whole cell lysate
Lane 3: HeLa whole cell lysate
Lane 4: COS-7 whole cell lysate
Lysates/proteins at 20 µg per lane. Secondary Goat Anti-mouse IgG, (H+L), Peroxidase conjugated at 1/10000 dilution. Predicted band size : 24 kDa
Blocking/Dilution buffer: 5% NFD/MTBST.

Submit a product review to Biocompare.com

Submit a review of this product to Biocompare.com to receive a \$20 Amazon.com giftcard! Your reviews help your fellow scientists make the right decisions. Thank you for your contribution.



Anti-RAB21 Antibody

For Research Use Only. Not for use in diagnostic procedures.