

## Anti-PAPSS2 Mouse Monoclonal Antibody [Clone ID: OTI3H10]

Catalog Number: M05684

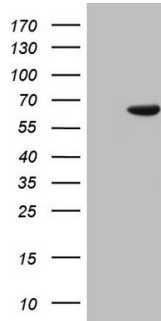
### Overview

Product Name	Anti-PAPSS2 Mouse Monoclonal Antibody [Clone ID: OTI3H10]
Reactive Species	Human, Mouse, Rat
Description	Boster Bio PAPSS2 mouse monoclonal antibody, clone OTI3H10 (formerly 3H10). Catalog# M05684. Tested in IHC, WB. This antibody reacts with Human, Mouse, Rat.
Application	IHC, WB
Clonality	Monoclonal OTI3H10
Formulation	PBS (pH 7.3) containing 1% stabilizing protein, 50% glycerol and 0.02% sodium azide. This antibody is supplied in a stabilized formulation. Compatibility with conjugation reactions depends on the chemistry of the conjugation method used. For conjugation methods that are not compatible with the stabilizing components present in this formulation, a carrier-free antibody format is required.
Storage Instructions	Store at -20°C as received.
Host	Mouse
Uniprot ID	O95340

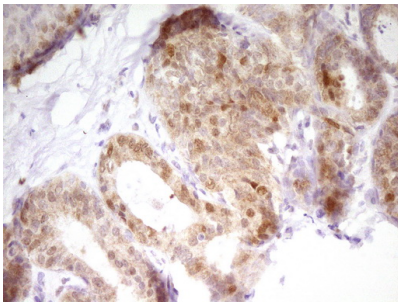
### Technical Details

Immunogen	Human recombinant protein fragment corresponding to amino acids 1-247 of human PAPSS2 (NP_004661) produced in E.coli.
Isotype	IgG1
Concentration	1 mg/ml
Purification	Purified from mouse ascites fluids or tissue culture supernatant by affinity chromatography (protein A/G)
Suggested Dilutions	WB 1:2000 IHC 1:150

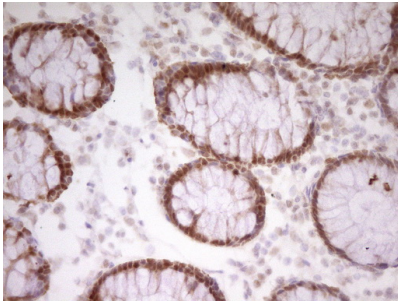
## Anti-PAPSS2 Mouse Monoclonal Antibody [Clone ID: OTI3H10] (M05684) Images



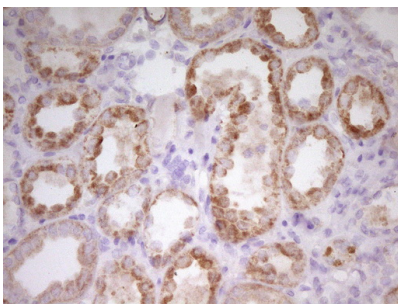
HEK293T cells were transfected with the pCMV6-ENTRY control (Left lane) or pCMV6-ENTRY PAPSS2 (Right lane) cDNA for 48 hrs and lysed. Equivalent amounts of cell lysates (5 ug per lane) were separated by SDS-PAGE and immunoblotted with anti-PAPSS2.



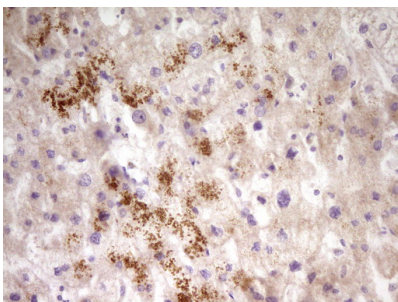
Immunohistochemical staining of paraffin-embedded Adenocarcinoma of Human breast tissue using anti-PAPSS2 mouse monoclonal antibody. (Heat-induced epitope retrieval by 1 mM EDTA in 10mM Tris)



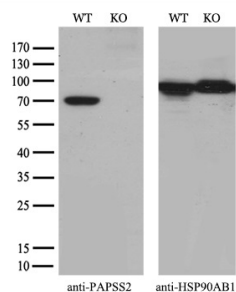
Immunohistochemical staining of paraffin-embedded Human colon tissue within the normal limits using anti-PAPSS2 mouse monoclonal antibody. (Heat-induced epitope retrieval by 1 mM EDTA in 10mM Tris)



Immunohistochemical staining of paraffin-embedded Human Kidney tissue within the normal limits using anti-PAPSS2 mouse monoclonal antibody. (Heat-induced epitope retrieval by 1 mM EDTA in 10mM Tris)



Immunohistochemical staining of paraffin-embedded Human liver tissue within the normal limits using anti-PAPSS2 mouse monoclonal antibody. (Heat-induced epitope retrieval by 1 mM EDTA in 10mM Tris)



Equivalent amounts of cell lysates (10 ug per lane) of wild-type HeLa cells (WT) and PAPSS2-Knockout HeLa cells (KO) were separated by SDS-PAGE and immunoblotted with anti-PAPSS2 monoclonal antibody M05684 (1:500<sup>x</sup>). Then the blotted membrane was stripped and reprobed with anti-HSP90 antibody as a loading control.

## Submit a product review to Biocompare.com

Submit a review of this product to Biocompare.com to receive a \$20 Amazon.com giftcard! Your reviews help your fellow scientists make the right decisions. Thank you for your contribution.



Anti-PAPSS2 Mouse Monoclonal Antibody [Clone ID: OT13H10]

For Research Use Only. Not for use in diagnostic procedures.