

Anti-Napsin NAPSA Antibody (Monoclonal, ABM4H60)

Catalog Number: M05685

About NAPSA

Spectrin is an actin binding protein that is a major component of the plasma membrane skeleton. Spectrins function as membrane organizers and stabilizers by forming dimers, tetramers and higher polymers. Vertebrate spectrins have two alpha-subunits (alpha-I/alpha-II) four beta-subunits (beta-I-beta-IV) and a beta-H subunit creating diversity and specialization of function. Spectrin III is highly expressed in brain, kidney, pancreas and liver, and at lower levels in lung and placenta. Spectrin beta 3 is primarily expressed in nervous tissues with highest expression levels in the cerebellum, where it is found in Purkinje cell soma and dendrites.

Overview

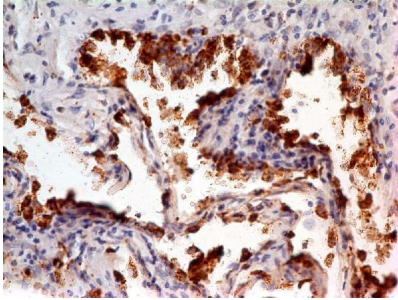
Product Name	Anti-Napsin NAPSA Antibody (Monoclonal, ABM4H60)
Reactive Species	Human
Description	Boster Bio Anti-Napsin NAPSA Antibody (Monoclonal, ABM4H60) (Catalog# M05685). Tested in IHC, WB application(s). This antibody reacts with Human.
Conjugate	Biotin
Application	IHC, WB
Clonality	Monoclonal ABM4H60
Formulation	100 µg in 200 µl PBS containing 0.05% stabilizing protein and 0.05% sodium azide This antibody is supplied in a stabilized formulation. Compatibility with conjugation reactions depends on the chemistry of the conjugation method used. For conjugation methods that are not compatible with the stabilizing components present in this formulation, a carrier-free antibody format is required.
Storage Instructions	Store the antibody at 4°C, stable for 6 months. For long-term storage, store at -20°C. Avoid repeated freeze and thaw cycles.
Host	Mouse
Uniprot ID	O96009

Technical Details

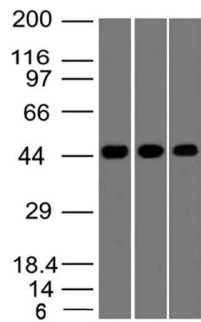
Immunogen	A partial length recombinant Napsin protein (amino acids 150-350)
Predicted Reactive Species	Pig, Rabbit
Cross Reactivity	Does not cross-react with primate, avian or amphibian GR.
Isotype	IgG1 Kappa
Form	Liquid

Concentration	0.5-1mg/ml, actual concentration vary by lot. Use suggested dilution ratio to decide dilution procedure.
Purification	Protein G Chromatography
Suggested Dilutions	Western blot: 2-4 µg/ml IHC: 5-10 µg/ml

Anti-Napsin NAPSA Antibody (Monoclonal, ABM4H60) (M05685) Images



Immunohistochemical analysis of Napsin in Lung Adenocarcinoma tissue using Napsin antibody (Clone: ABM4H60) at 5 μ



Western blot analysis of Napsin. Anti-Napsin antibody (Clone: ABM4H60) was tested at 0.5 μ g/ml on K562, Liver and Hek 293 lysates.

1 Publications Citing This Product

1. PubMed ID: 411061, Identification and characterization of a novel nasopharyngeal carcinoma-associated peptide: NAP-1

Visit bosterbio.com/anti-napsin-antibody-monoclonal-abm4h60-m05685-boster.html to see all 1 publications.

Submit a product review to Biocompare.com

Submit a review of this product to Biocompare.com to receive a \$20 Amazon.com giftcard! Your reviews help your fellow scientists make the right decisions. Thank you for your contribution.



Anti-Napsin NAPSA Antibody (Monoclonal, ABM4H60)

For Research Use Only. Not for use in diagnostic procedures.