

## Anti-GBP2 Mouse Monoclonal Antibody [Clone ID: OTI5C8]

Catalog Number: M05737

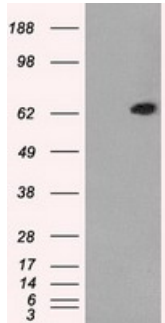
### Overview

Product Name	Anti-GBP2 Mouse Monoclonal Antibody [Clone ID: OTI5C8]
Reactive Species	Human
Description	Boster Bio GBP2 mouse monoclonal antibody, clone OTI5C8 (formerly 5C8). Catalog# M05737. Tested in FC, IF, IHC, WB. This antibody reacts with Human.
Application	Flow Cytometry, IF, IHC, WB
Clonality	Monoclonal OTI5C8
Formulation	PBS (pH 7.3) containing 1% stabilizing protein, 50% glycerol and 0.02% sodium azide. This antibody is supplied in a stabilized formulation. Compatibility with conjugation reactions depends on the chemistry of the conjugation method used. For conjugation methods that are not compatible with the stabilizing components present in this formulation, a carrier-free antibody format is required.
Storage Instructions	Store at -20°C as received.
Host	Mouse
Uniprot ID	P32456

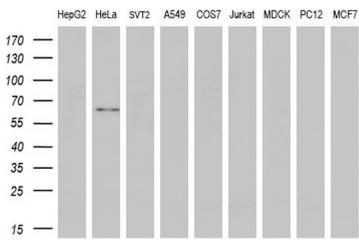
### Technical Details

Immunogen	Full length human recombinant protein of human GBP2 (NP_004111) produced in HEK293T cell.
Isotype	IgG2b
Concentration	1.5 mg/ml
Purification	Purified from mouse ascites fluids or tissue culture supernatant by affinity chromatography (protein A/G)
Suggested Dilutions	WB: 1:2000 IHC: 1:50 IF: 1:100 Flow cytometry: 1:100

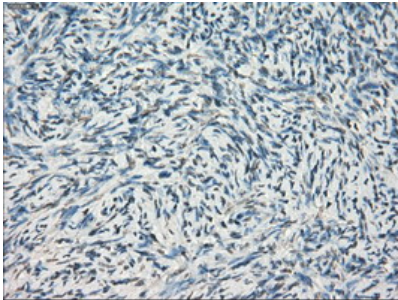
## Anti-GBP2 Mouse Monoclonal Antibody [Clone ID: OTI5C8] (M05737) Images



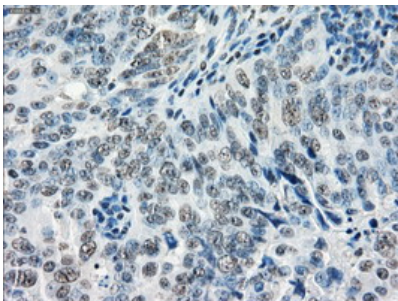
HEK293T cells were transfected with the pCMV6-ENTRY control (Left lane) or pCMV6-ENTRY GBP2 (Right lane) cDNA for 48 hrs and lysed. Equivalent amounts of cell lysates (5 ug per lane) were separated by SDS-PAGE and immunoblotted with anti-GBP2.



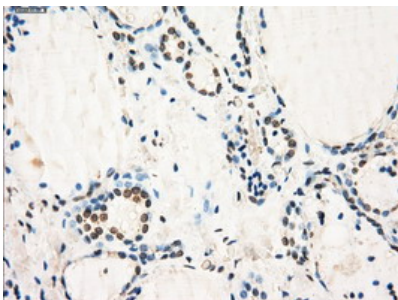
Western blot analysis of extracts (35ug) from 9 different cell lines by using anti-GBP2 monoclonal antibody (HepG2: human; HeLa: human; SVT2: mouse; A549: human; COS7: monkey; Jurkat: human; MDCK: canine; PC12: rat; MCF7: human) (1:200).



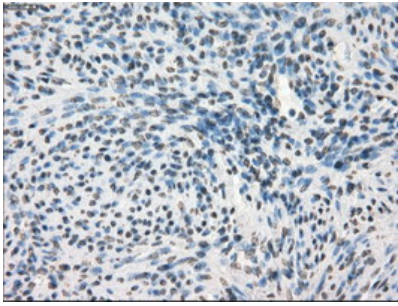
Immunohistochemical staining of paraffin-embedded Human Ovary tissue within the normal limits using anti-GBP2 mouse monoclonal antibody. (Heat-induced epitope retrieval by 10mM citric buffer)



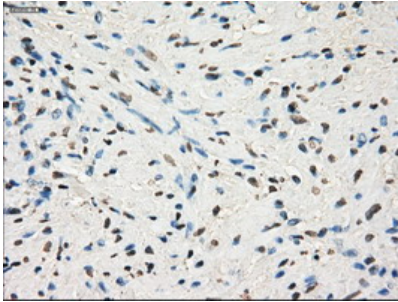
Immunohistochemical staining of paraffin-embedded Adenocarcinoma of Human ovary tissue using anti-GBP2 mouse monoclonal antibody. (Heat-induced epitope retrieval by 10mM citric buffer)



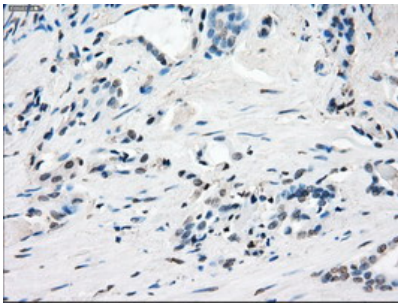
Immunohistochemical staining of paraffin-embedded Human thyroid tissue within the normal limits using anti-GBP2 mouse monoclonal antibody. (Heat-induced epitope retrieval by 10mM citric buffer)



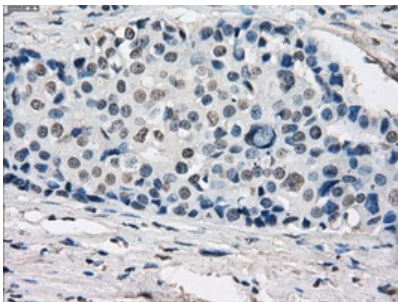
Immunohistochemical staining of paraffin-embedded Human endometrium tissue within the normal limits using anti-GBP2 mouse monoclonal antibody. (Heat-induced epitope retrieval by 10mM citric buffer)



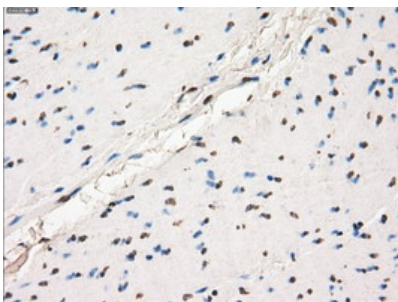
Immunohistochemical staining of paraffin-embedded Human prostate tissue within the normal limits using anti-GBP2 mouse monoclonal antibody. (Heat-induced epitope retrieval by 10mM citric buffer)



Immunohistochemical staining of paraffin-embedded Carcinoma of Human prostate tissue using anti-GBP2 mouse monoclonal antibody. (Heat-induced epitope retrieval by 10mM citric buffer)

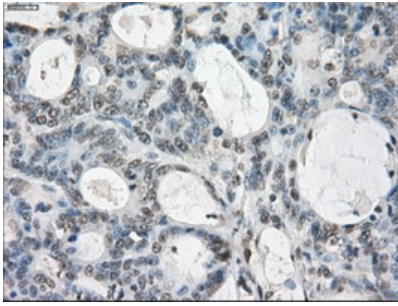


Immunohistochemical staining of paraffin-embedded Adenocarcinoma of Human breast tissue using anti-GBP2 mouse monoclonal antibody. (Heat-induced epitope retrieval by 10mM citric buffer)

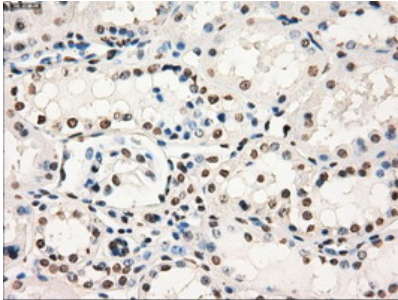


Immunohistochemical staining of paraffin-embedded Human colon tissue within the normal limits using anti-GBP2 mouse monoclonal antibody. (Heat-induced epitope retrieval by 10mM citric buffer)

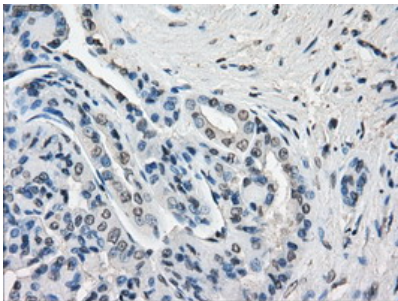
Immunohistochemical staining of paraffin-embedded Adenocarcinoma of Human colon tissue using anti-GBP2 mouse monoclonal antibody. (Heat-induced epitope retrieval



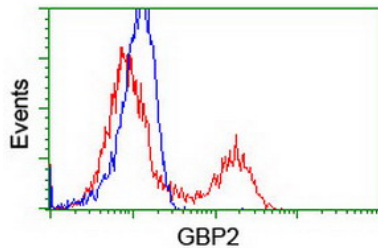
by 10mM citric buffer



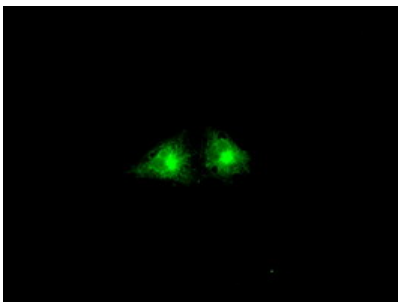
Immunohistochemical staining of paraffin-embedded Human Kidney tissue within the normal limits using anti-GBP2 mouse monoclonal antibody. (Heat-induced epitope retrieval by 10mM citric buffer)



Immunohistochemical staining of paraffin-embedded Carcinoma of Human kidney tissue using anti-GBP2 mouse monoclonal antibody. (Heat-induced epitope retrieval by 10mM citric buffer)



HEK293T cells transfected with either GBP2 (Myc-DDK-tagged) overexpress plasmid (Red) or empty vector control plasmid (Blue) were immunostained by anti-GBP2 antibody (M05737)



Anti-GBP2 mouse monoclonal antibody (M05737) immunofluorescent staining of COS7 cells transiently transfected by pCMV6-ENTRY GBP2.

**Submit a product review to Biocompare.com**

Submit a review of this product to Biocompare.com to receive a \$20 Amazon.com giftcard! Your



reviews help your fellow scientists make the right decisions. Thank you for your contribution.

Anti-GBP2 Mouse Monoclonal Antibody [Clone ID: OT15C8]

For Research Use Only. Not for use in diagnostic procedures.