

## Anti-IL36 gamma (IL36G) Mouse Monoclonal Antibody [Clone ID: OTI2F4]

Catalog Number: M05759

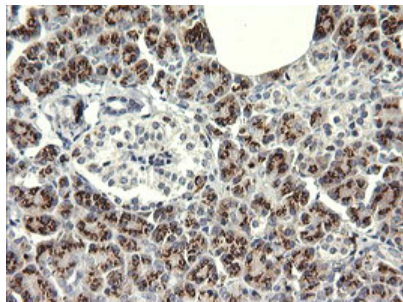
### Overview

Product Name	Anti-IL36 gamma (IL36G) Mouse Monoclonal Antibody [Clone ID: OTI2F4]
Reactive Species	Human
Description	Boster Bio IL1F9 (IL36 gamma) mouse monoclonal antibody, clone OTI2F4 (formerly 2F4). Catalog# M05759. Tested in IF, IHC. This antibody reacts with Human.
Application	IF, IHC
Clonality	Monoclonal OTI2F4
Formulation	PBS (pH 7.3) containing 1% stabilizing protein, 50% glycerol and 0.02% sodium azide. This antibody is supplied in a stabilized formulation. Compatibility with conjugation reactions depends on the chemistry of the conjugation method used. For conjugation methods that are not compatible with the stabilizing components present in this formulation, a carrier-free antibody format is required.
Storage Instructions	Store at -20°C as received.
Host	Mouse
Uniprot ID	Q9NZH8

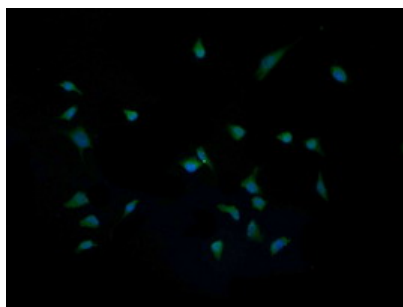
### Technical Details

Immunogen	Full length human recombinant protein of human IL1F9 (NP_062564) produced in HEK293T cell.
Isotype	IgG1
Concentration	1 mg/ml
Purification	Purified from mouse ascites fluids or tissue culture supernatant by affinity chromatography (protein A/G)
Suggested Dilutions	IHC 1:150, IF 1:100

## Anti-IL36 gamma (IL36G) Mouse Monoclonal Antibody [Clone ID: OTI2F4] (M05759) Images



Immunohistochemical staining of paraffin-embedded Human pancreas tissue within the normal limits using anti-IL1F9 mouse monoclonal antibody. (Heat-induced epitope retrieval by 10mM citric buffer)



Immunofluorescent staining of HeLa cells using anti-IL1F9 mouse monoclonal antibody (M05759).

### Submit a product review to Biocompare.com

Submit a review of this product to Biocompare.com to receive a \$20 Amazon.com giftcard! Your reviews help your fellow scientists make the right decisions. Thank you for your contribution.



Anti-IL36 gamma (IL36G) Mouse Monoclonal Antibody [Clone ID: OTI2F4]

For Research Use Only. Not for use in diagnostic procedures.